

TUESDAY, MARCH 13, 2018

FORT STOCKTON, TX

SIGN IN AT 10:00 AM | AUCTION AT 1 00 PM

*Selling 120 head of 18 month
& yearling Angus bulls*

MCKENZIE CATTLE.COM

Sarah McKenzie

915-637-3845

Houston McKenzie

432-553-6670

Directions:

**From I-10: 18 miles
East of Ft. Stockton.
Exit 277 FM 2023.
Head south 5 miles.
Farm HQ are on the west side.
Farm corrals: about ½ mile from FM 2023.**





8 Ranch
HC 73 Box 3
McCamey, Texas 79752

Phone: 432.395.2250
Cell: 432.553.6670
houston.mckenzie@yahoo.com

Greetings,

Welcome to our 12th Annual Angus Bull Sale. Looking back over the years, it is amazing to see the changes we have made in our herd. We think we have made a lot of progress towards providing some nice Angus bulls for you, our customers. The bulls we are offering this year are proof of the genetic progress we have made.

Each year we continue to refine our breeding program and criteria; selecting sires that bring superior traits to our herd. Our goal is to use genetics that will make you more money in the commercial herd. We know you can get great genetics from many breeders, but we believe good Angus bulls that are raised here in our rocky, dry, tough country have added value. MLL bulls know prickly pear, burro grass and chamisa and are grown out in large rocky traps; so they are in good condition to go to work. Our bulls are young but they were raised here and will work in this environment with little transition time.

We appreciate your support at our sales and the confidence you have in our animals.

Thank you,

All the Crew

McKenzie Land & Livestock

12th Annual Angus Bull Sale

Tuesday, March 13, 2018



Sale Terms and Conditions

Sale order:

Bulls will sell in the order listed in the catalog. The LOT number can be found on the green tag in the left ear. Sale order will be in the following order: 18 month old bulls, older yearlings, younger yearlings. Please listen for announcements regarding sale order.

Fertility and Health:

The BSE testing of these animals was performed on February 13 and 14, 2018 by Dr. Ronald Box, DVM. All sale bulls are guaranteed virgin and have passed a breeding soundness exam with excellent semen quality. All bulls in the sale have been trich tested and are able to travel out of state on sale day. We will have a veterinarian available to write health papers at the sale.

All bulls in sale have been BVD-PI tested and are negative for BVD. Testing was performed by Kansas State University Veterinary Laboratory.

Delivery options:

It is best if you can pick up your bulls at the time of the sale; all bulls are trich tested and can travel out of state the day of sale. New Mexico buyers will have the option of picking up their bulls at the MLL Palma Ranch; 40 miles west of Santa Rosa at no additional charge.

However, if you need bulls delivered to your location please call Sarah or Houston, we would be happy to help you get your bulls.

Loading:

All bulls will be paid for before loading unless other arrangements are made. Please see the cashier to settle up prior to loading your bull; you will need your invoice/loading ticket when picking up your bull(s). Please listen to general announcements indicating location of loading and personnel responsible for loading. *Please help us and double check the eartag and lot number to ensure that you are getting the bull you purchased.*

Guarantee: We guarantee that all animals in the sale are fertile to the best of our knowledge. If a bull is injured with a breeding injury at any time in the first breeding season so as to make them functionally infertile, we will offer a suitable replacement if available.

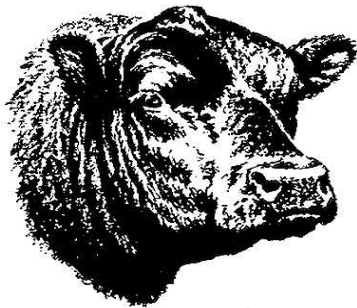
We define the first breeding season as the 90 days after turning the bulls out. If not available, we will offer you a credit equal to the bull's purchase price minus the salvage value received for that bull. We ask that you contact us prior to the disposal of the animal.

Please remember:

It is important to consider that these are young bulls; they will need to be taken care of to ensure that they continue to grow out good and be able to serve your herd. It is essential that a young bull not get too thin and are turned out at a stocking ratio of 15 cows/1bull.

Sire Information:

The first section of the catalog features the sires of the bulls for sale. Artificial insemination bulls are labeled "AI" and natural service bulls "NS".



CATALOG INFORMATION

REGISTERED OR COMMERCIAL?

We do have a few commercial bulls for sale. There are several ways to differentiate between the registered and commercial animals in the sale. All commercial animals have a "C" before the number in their name. All commercial animals have a "registration number" that starts with a "6". Example: MLL TEN X C640; 624394565 (*this is an AI calf but is un-registerable because his great-granddam's papers were not in order.*) The Angus Association allows us to collect and track data on the commercial animals, so they are treated just like our registered animals.

COMMENTS SECTION

This section contains information that is not shown in the table, but that we feel adds additional sorting tools for the customer. You will find the following comments in this section: Calving Ease, Top % EPD comparison and any genetic testing that was done.

CALVING EASE

Bulls that we feel comfortable in using on heifers are labeled ****CALVING EASE****. Bulls labeled as ****MODERATE CALVING EASE**** are ok to use on older more grown out heifers or in cow herds where cows and heifers may run together. You can also refer to the CED EPD to help with selecting a calving ease bull. However, it is important to remember that there other factors that play into a heifer's unassisted delivery and we cannot guarantee a calving ease.

AVERAGE DAILY GAIN

There will be an add on sheet of the average daily gain of the bulls in the sale. It will show the weaning weights as well as test weights and the resulting ADG. Ratios will also be shown on that sheet as well.

ULTRASOUND DATA

Ultrasound data is found in the catalog; however you will notice that there is a difference between the older (18 month old) and yearling bulls in size of rib eye and marbling. This is due to the fact that while this part of the calf was being formed they were a little stressed. The Fall Calving herd has a harder time because they are raising a calf during the hardest time of the year (straight through the dry winter months.) So please refer to the ratios within the groups rather than comparing older and younger bulls.

50K GENOMIC ENHANCED EPDS

All registered and a commercial bulls have been 50K tested. This allows for higher accuracy in EPDs, so you can have a better picture of the bull's genetic potential. Please refer to the information on how genomic enhanced EPDs work.

TOP % EPD comments

These numbers highlight how that individual bull ranks within the entire breed. For example: MLL ALL IN E564 ranks: Top 15% CED EPD, Top 30% BW EPD, 20% \$W EPD...this bulls CED EPD ranks in the top 15% of the Angus breed for calving ease direct and in the top 30% of the Angus breed for birth weight EPD.



• • •
One ton of alfalfa hay will be given to the high dollar volume buyer and one ton of alfalfa hay will be given to the buyer of the high selling bull.
• • •

Expected Progeny Difference (EPD), is the prediction of how future progeny of each animal are expected to perform relative to the progeny of other animals listed in the database. EPDs are expressed in units of measure for the trait, plus or minus. **Interim EPDs** may appear on young animals when their performance has yet to be incorporated into the American Angus Association National Cattle Evaluation (NCE) procedures. This EPD will be preceded by an "I", and may or may not include the animal's own performance record for a particular trait, depending on its availability, appropriate contemporary grouping, or data edits needed for NCE.

\$Value Indexes, are multi-trait selection indexes, expressed in dollars per head, to assist beef producers by adding simplicity to genetic selection decisions. The \$Value is an estimate of how future progeny of each sire are expected to perform, on average, compared to progeny of other sires in the database if the sires were randomly mated to cows and if calves were exposed to the same environment.

PRODUCTION EPDs

Calving Ease Direct (CED), is expressed as a difference in percentage of unassisted births, with a higher value indicating greater calving ease in first-calf heifers. It predicts the average difference in ease with which a sire's calves will be born when he is bred to first-calf heifers.

Birth Weight EPD (BW), expressed in pounds, is a predictor of a sire's ability to transmit birth weight to his progeny compared to that of other sires.

Weaning Weight EPD (WW), expressed in pounds, is a predictor of a sire's ability to transmit weaning growth to his progeny compared to that of other sires.

Yearling Weight EPD (YW), expressed in pounds, is a predictor of a sire's ability to transmit yearling growth to his progeny compared to that of other sires.

Scrotal Circumference EPD (SC), expressed in centimeters, is a predictor of the difference in transmitting ability for scrotal size compared to that of other sires.

MATERNAL EPDs

Maternal Milk EPD (Milk), is a predictor of a sire's genetic merit for milk and mothering ability as expressed in his daughters compared to daughters of other sires. In other words, it is that part of a calf's weaning weight attributed to milk and mothering ability.

Cow Energy Value (\$EN), expressed in dollar savings per cow per year, assesses differences in cow energy requirements as an expected dollar savings difference in daughters of sires. A larger value is more favorable when comparing two animals (more dollars saved on feed energy expenses).

Components for computing the cow \$EN savings difference include lactation energy requirements and energy costs associated with differences in mature cow size.

CARCASS EPDs

Carcass Weight EPD (CW), expressed in pounds is a predictor of the differences in hot carcass weight of a sire's progeny compared to progeny of other sires.

Marbling EPD (Marb), expressed as a fraction of the difference in USDA marbling score of a sire's progeny compared to progeny of other sires.

Ribeye Area EPD (RE), expressed in square inches, is a predictor of the difference in ribeye area of a sire's progeny compared to progeny of other sires.

Fat Thickness EPD (Fat), expressed in inches, is a predictor of the differences in external fat thickness at the 12th rib (as measured between the 12th and 13th ribs) of a sire's progeny compared to progeny of other sires.

\$VALUE INDEXES

\$Value indexes are multi-trait selection indexes, expressed in dollars per head, to assist beef producers by adding simplicity to genetic selection decisions. The \$Value is an estimate of how future progeny of each sire are expected to perform, on average, compared to progeny of other sires in the database if the sires were randomly mated to cows and if calves were exposed to the same environment.

Weaned Calf Value (\$W), an index value expressed in dollars per head, is the expected average difference in future progeny performance for pre-weaning merit. \$W includes both revenue and cost adjustments associated with differences in birth weight, weaning direct growth, maternal milk and mature cow size.

Feedlot Value (\$F), an index value expressed in dollars per head, is the expected average difference in future progeny performance for postweaning merit compared to progeny of other sires.

Grid Value (\$G), an index value expressed in dollars per head, is the expected average difference in future progeny performance for carcass grid merit compared to progeny of other sires.

Quality Grade (\$QG) \$QG represents the quality grade segment of the economic advantage found in \$G. \$QG is intended for the specialized user wanting to place more emphasis on improving quality grade. The carcass marbling (Marb) EPD contributes to \$QG.

Yield Grade (\$YG) \$YG represents the yield grade segment of the economic advantage found in \$G. \$YG is intended for the specialized user wanting to place more emphasis on red meat yield. It provides a multi-trait approach to encompass ribeye, fat thickness and weight into an economic value for red meat yield.

Beef Value (\$B), an index value expressed in dollars per head, is the expected average difference in future progeny performance for postweaning and carcass value compared to progeny of other sires.

ULTRASOUND DATA

Ultrasound allows for the evaluation of the carcass traits on a live animal. The three carcass measures that the ultrasound system estimates are: back fat (Rib), rib eye area (REA) and intramuscular fat (%IMF). The numbers shown on in the catalog are the adjusted data for ultrasound data.

Genetic Defect Information

We test all the bulls for any genetic defects that they may be at risk of carrying. We do not routinely sell defect carriers; however, if the bull is a carrier it will be noted in the catalog. The genetic defect DD (Developmental Duplication) is the exception to our defect policy. DD is a recessively inherited defect and is managed with selective mating within the seedstock industry. It is generally accepted that a DDC bull can be used in a commercial setting with no adverse effect on the commercial herd.

SIREs

Lot AI **K C F Bennett Absolute**
DOB: 03/08/09 Bull 16430795 Tattoo: W299

Sire: Sitz Traveler 8180 S A V Final Answer 0035 S A V Emulous 8145 Wulffs Ext 6106 Dam: Thomas Miss Lucy 5152 Thomas Miss Lucy 3050	\$W +64.59 \$F +88.16 \$G +38.84 \$YG +2.22 \$B +155.66 \$EN +3.94
---	---

CED	BW	WN	YR	SC	Milk	CW	Marb	RE	Fat
+ 11	-0.2	+ 63	+ 117	+ 1.07	+ 18	+ 49	+ 0.70	+ 0.71	+ 0.030
Act. BW	Adj. WW	Adj. YW	Act. SC	ADG	Act. % IMF	Act. REA	Act. RibFat	Act. RmpFat	

Multitrait excellence in this easy calving, easy fleshing sire. Calves are easy keeping and moderate in size.

Lot AI **Basin Payweight 1682**
DOB: 02/11/11 Bull 17038724 Tattoo: 1682

Sire: Vermilion Payweight J847 Basin Payweight 006S Basin Lucy 3829 HARB Pendleton 765 J H Dam: 21AR O Lass 7017 21AR O Lass F24A	\$W +73.31 \$F +85.72 \$G +31.69 \$YG -6.93 \$B +144.52 \$EN -12.26
--	--

CED	BW	WN	YR	SC	Milk	CW	Marb	RE	Fat
+ 6	+ 0.7	+ 68	+ 120	+ 1.00	+ 26	+ 49	+ 0.77	+ 0.34	+ 0.055
Act. BW	Adj. WW	Adj. YW	Act. SC	ADG	Act. % IMF	Act. REA	Act. RibFat	Act. RmpFat	

One of the Angus breed's most sought after sire; calves are deep bodied and thick. High weaning weights and a powerful phenotype are consistent in his offspring in this sale.

Lot AI **A A R Ten X 7008 S A**
DOB: 02/09/07 Bull # 15719841 Tattoo: 7008

Sire: S A F Focus of E R Mytty In Focus Mytty Countess 906 S A V Adaptor 2213 Dam: A A R Lady Kelton 5551 H S A F Lady Kelton 504B	\$W +71.11 \$F +91.05 \$G +47.82 \$YG +5.29 \$B +160.79 \$EN -1.35
---	---

CED	BW	WN	YR	SC	Milk	CW	Marb	RE	Fat
+ 9	+ 0.7	+ 64	+ 123	+ 1.16	+ 23	+ 50	+ 0.92	+ 0.63	-0.008
Act. BW	Adj. WW	Adj. YW	Act. SC	ADG	Act. % IMF	Act. REA	Act. RibFat	Act. RmpFat	

One of the most popular bulls in the Angus breed. Ten X sons are consistently thick and deep with good carcass traits.

Lot AI **S S Objective T510 OT26**
DOB: 04/25/00 Bull # 13776378 Tattoo: OT26

Sire: D H D Traveler 6807 S S Traveler 6807 T510 S S Miss Hi Spade A114 S S Rito Rito R76 R011 Dam: S S Miss Rita R011 7R8 S S Miss Ultress U56	\$W +74.28 \$F +47.96 \$G +49.17 \$YG +6.39 \$B +100.81 \$EN -5.07
--	---

CED	BW	WN	YR	SC	Milk	CW	Marb	RE	Fat
+ 12	+ 0.7	+ 64	+ 109	+ 0.32	+ 26	+ 29	+ 0.93	+ 0.33	-0.018
Act. BW	Adj. WW	Adj. YW	Act. SC	ADG	Act. % IMF	Act. REA	Act. RibFat	Act. RmpFat	
66	623								

An older bull that still has it! Objective calves grow fast and gain well.

Lot AI **Connealy Combination 0188**
DOB: 01/24/10 Bull 16748950 Tattoo: 0188

Sire: KMK Alliance 6595 187 Connealy Consensus Blinda of Conanga 004 Connealy Tobin Dam: Black Cayra of Conanga 8127 Black Camma of Conanga 4184	\$W +52.59 \$F +69.20 \$G +35.76 \$YG +1.02 \$B +146.84 \$EN +5.78
---	---

CED	BW	WN	YR	SC	Milk	CW	Marb	RE	Fat
+ 5	-0.8	+ 55	+ 96	+ 1.22	+ 17	+ 41	+ 0.64	+ 0.47	+ 0.026
Act. BW	Adj. WW	Adj. YW	Act. SC	ADG	Act. % IMF	Act. REA	Act. RibFat	Act. RmpFat	

Popular AI bull that we have used for a couple years. We think his calves are thick and

Lot AI **Deer Valley All In**
DOB: 01/23/12 Bull 17307074 Tattoo: 2138

Sire: Mytty In Focus A A R Ten X 7008 S A A A R Lady Kelton 5551 Sitz Upward 307R Dam: Deer Valley Rita 0274 G A R Objective 2345	\$W +80.82 \$F +87.09 \$G +44.32 \$YG +9.27 \$B +141.80 \$EN -5.09
--	---

CED	BW	WN	YR	SC	Milk	CW	Marb	RE	Fat
+ 11	+ 0.4	+ 74	+ 129	+ 0.95	+ 22	+ 45	+ 0.65	+ 0.70	-0.031
Act. BW	Adj. WW	Adj. YW	Act. SC	ADG	Act. % IMF	Act. REA	Act. RibFat	Act. RmpFat	

This TenX son is an attractive bull with his calving ease and high weaning weights.

Lot AI **Connealy Capitalist 028**
DOB: 01/11/10 Bull # 16752262 Tattoo: 028

Sire: Sitz Traveler 8180 S A V Final Answer 0035 S A V Emulous 8145 C R A Bextor 872 5205 608 Dam: Prides Pita of Conanga 8821 Prides Trav of Conanga 6499	\$W +65.25 \$F +40.23 \$G +26.13 \$YG +0.95 \$B +93.85 \$EN +8.39
---	--

CED	BW	WN	YR	SC	Milk	CW	Marb	RE	Fat
+ 12	+ 0.3	+ 58	+ 99	+ 0.96	+ 20	+ 35	+ 0.39	+ 0.54	+ 0.044
Act. BW	Adj. WW	Adj. YW	Act. SC	ADG	Act. % IMF	Act. REA	Act. RibFat	Act. RmpFat	

A proven calving ease bull that gives depth and muscle to calves. The Capitalist calves in the sale were some of the top gaining bulls.

Lot AI **V A R Discovery 2240**
DOB: 03/06/12 Bull 17262835 Tattoo: 2240

Sire: Mytty In Focus A A R Ten X 7008 S A A A R Lady Kelton 5551 Sitz Upward 307R Dam: Deer Valley Rita 0308 G A R Objective 2345	\$W +69.43 \$F +109.58 \$G +57.37 \$YG +10.97 \$B +164.46 \$EN -25.88
--	--

CED	BW	WN	YR	SC	Milk	CW	Marb	RE	Fat
+ 5	+ 1.6	+ 74	+ 144	+ 1.92	+ 27	+ 51	+ 1.10	+ 0.72	-0.060
Act. BW	Adj. WW	Adj. YW	Act. SC	ADG	Act. % IMF	Act. REA	Act. RibFat	Act. RmpFat	

Popular AI bull due to the many positive traits his offspring have. This TenX son brings a moderate birth weight with good growth and carcass traits. We like this first calf crop of his.

Lot AI	KSU Konza 3111									
	DOB: 02/05/13		Bull		17667190		Tattoo: 3111			
Mc Kenzie Land & Livestock	Sire: Connealy Tobin									
	Connealy Confidence 0100									
	Becka Gala of Conanga 8281									
	B/R New Day 454									
	Dam: KSU Miss New Day 1173									
	G A R Objective 2177									
	\$W	+64.17								
	\$F	+78.70								
	\$G	+32.76								
	\$YG	+9.25								
	\$B	+153.16								
	\$EN	-10.58								
	CED	BW	WN	YR	SC	Milk	CW	Marb	RE	Fat
	+ 13	-0.8	+ 64	+ 118	-0.56	+ 23	+ 58	+ 0.35	+ 0.96	-0.022
	Act. BW	Adj. WW	Adj. YW	Act. SC	ADG	Act. % IMF	Act. REA	Act. RibFat	Act. RmpFat	

Moderate sized bull that delivers thickness and increased muscle to calves. We have found his calves to be very gentle.

Lot NS	J-C Future Direction 1110									
	DOB: 03/17/11		Bull		17021412		Tattoo: 1110			
Mc Kenzie Land & Livestock	Sire: C A Future Direction 5321									
	B/R Future Direction 6171									
	B/R Blackcap Empress 470									
	S S Objective T510 0T26									
	Dam: J-C Faye 0837									
	J-C Faye 0622									
	\$W	+42.83								
	\$F	+49.36								
	\$G	+47.22								
	\$YG	+10.01								
	\$B	+133.08								
	\$EN	-10.71								
	CED	BW	WN	YR	SC	Milk	CW	Marb	RE	Fat
	+ 11	+ 0.2	+ 44	+ 86	+ 0.61	+ 28	+ 34	+ 0.72	+ 0.69	-0.021
	Act. BW	Adj. WW	Adj. YW	Act. SC	ADG	Act. % IMF	Act. REA	Act. RibFat	Act. RmpFat	

This bull was a top indexing bull in the Tucumcari Bull Test in 2012. Boasting a 16" rib eye, we have found that his carcass traits are very heritable.

Lot AI	LD Emblazon 999									
	DOB: 09/15/09		Bull		16665803		Tattoo: 999			
Mc Kenzie Land & Livestock	Sire: D H D Traveler 6807									
	O C C Emblazon 854E									
	Dixie Erica of C H 1019									
	Rito 111 of 2536 Rito 616									
	Dam: SH Forever Lady 3124 5118									
	Toebben Forever Lady 3124									
	\$W	+54.55								
	\$F	+98.89								
	\$G	+29.84								
	\$YG	+5.97								
	\$B	+138.92								
	\$EN	-5.25								
	CED	BW	WN	YR	SC	Milk	CW	Marb	RE	Fat
	+ 13	+ 0.7	+ 68	+ 121	-0.26	+ 15	+ 40	+ 0.36	+ 0.67	+ 0.008
	Act. BW	Adj. WW	Adj. YW	Act. SC	ADG	Act. % IMF	Act. REA	Act. RibFat	Act. RmpFat	

A moderate milking bull that delivers thickness and phenotype to his calves.

Lot NS	RAB-GAR Future Design 4518T									
	DOB: 01/01/07		Bull		16028944		Tattoo: 4518T			
Mc Kenzie Land & Livestock	Sire: C A Future Direction 5321									
	RAB-EGL Future Design									
	Eagle 1407 Isabel 2215									
	RAB-GAR Load Up 4049J									
	Dam: RAB-GAR MS Load UP - 4870N									
	RAB-GAR MS Primitime 4642K									
	\$W	+49.81								
	\$F	+59.80								
	\$G	+40.33								
	\$YG	+3.71								
	\$B	+150.22								
	\$EN	-6.83								
	CED	BW	WN	YR	SC	Milk	CW	Marb	RE	Fat
	+ 10	+ 0.8	+ 48	+ 89	+ 0.75	+ 27	+ 42	+ 0.70	+ 0.50	+ 0.005
	Act. BW	Adj. WW	Adj. YW	Act. SC	ADG	Act. % IMF	Act. REA	Act. RibFat	Act. RmpFat	

This will be the last year that we will offer sons out of this gentle giant's son. He was moved to a commercial herd in 2017 and finally retired in January 2018. Easy calving and easy keeping; with proven longevity was a complete package in this gentle bull.

Lot AI	EF Complement 8088									
	DOB: 01/18/08		Bull #		16198796		Tattoo: 8088			
Mc Kenzie Land & Livestock	Sire: C A Future Direction 5321									
	Basin Franchise P142									
	Basin Chloe 812L									
	BR Midland									
	Dam: EF Everelda Entense 6117									
	H F Everelda Entense 869									
	\$W	+83.81								
	\$F	+75.50								
	\$G	+27.33								
	\$YG	-8.70								
	\$B	+129.99								
	\$EN	-4.54								
	CED	BW	WN	YR	SC	Milk	CW	Marb	RE	Fat
	+ 11	+ 0.1	+ 59	+ 111	+ 0.72	+ 33	+ 44	+ 0.68	+ 0.39	+ 0.078
	Act. BW	Adj. WW	Adj. YW	Act. SC	ADG	Act. % IMF	Act. REA	Act. RibFat	Act. RmpFat	

This bull brings high weaning weights along with easy calving. Topping the angus breed in \$W and \$F.

Lot NS	RAB New Standard 123Z									
	DOB: 02/08/12		Bull		17441657		Tattoo: 123Z			
Mc Kenzie Land & Livestock	Sire: Bon View New Design 1407									
	LCC New Standard									
	LCC Sunset K3118									
	S S Objective T510 0T26									
	Dam: RAB MS Objective 601U									
	RAB MS Retail Product 767R									
	\$W	+46.11								
	\$F	+47.07								
	\$G	+39.92								
	\$YG	+3.30								
	\$B	+106.82								
	\$EN	-10.74								
	CED	BW	WN	YR	SC	Milk	CW	Marb	RE	Fat
	+ 11	-0.5	+ 44	+ 80	+ 0.78	+ 29	+ 22	+ 0.70	+ 0.50	+ 0.042
	Act. BW	Adj. WW	Adj. YW	Act. SC	ADG	Act. % IMF	Act. REA	Act. RibFat	Act. RmpFat	

Calving ease bull purchased from RA Brown sale in 2013.

Lot NS	J-C Total 0922									
	DOB: 02/05/09		Bull		16418897		Tattoo: 0922			
Mc Kenzie Land & Livestock	Sire: Bon View New Design 208									
	TC Total 410									
	TC Erica Eileen 2047									
	Stepladder Fame 740									
	Dam: J-C Faye 0257									
	B&H Faye 9683									
	\$W	+35.31								
	\$F	+15.98								
	\$G	+50.67								
	\$YG	+12.33								
	\$B	+80.92								
	\$EN	+2.11								
	CED	BW	WN	YR	SC	Milk	CW	Marb	RE	Fat
	+ 5	-0.2	+ 38	+ 67	-0.08	+ 23	+ 12	+ 0.76	+ 0.58	-0.021
	Act. BW	Adj. WW	Adj. YW	Act. SC	ADG	Act. % IMF	Act. REA	Act. RibFat	Act. RmpFat	

This easy going, gentle bull was purchased from the Tucumcari Bull sale in 2010. He is still in the herd working in the summer of 2017 at the age of 8 years. Calves are gentle and phenotypically correct.

Lot NS	PS Lookout 1253									
	DOB: 02/05/12		Bull		17303266		Tattoo: 1253			
Mc Kenzie Land & Livestock	Sire: S S Objective T510 0T26									
	J-C SS Objective 0852									
	J-C Joy 0610									
	Mytty In Focus									
	Dam: J-C Beverly 0882									
	J-C Beverly 0540									
	\$W	+26.38								
	\$F	+18.12								
	\$G	+49.28								
	\$YG	+6.50								
	\$B	+94.45								
	\$EN	+13.40								
	CED	BW	WN	YR	SC	Milk	CW	Marb	RE	Fat
	+ 15	-0.3	+ 37	+ 68	+ 1.48	+ 15	+ 19	+ 0.93	+ 0.33	-0.001
	Act. BW	Adj. WW	Adj. YW	Act. SC	ADG	Act. % IMF	Act. REA	Act. RibFat	Act. RmpFat	

Gentle, top indexing bull from the Tucumcari Bull Test.

Lot NS RRR 1540 5050 2048 846 552
 DOB: 04/15/10 Bull 17015861 Tattoo: 1540R

Sire: B/R New Design 036
 G A R New Design 5050
 G A R Precision 706

Dam: RRR 846 GRP 3132 510 1030
 RRR 2048 846 552 Univ 3298
 RRR 552 Univ 3298 T365 284

\$W	+44.61
\$F	+43.96
\$G	+53.80
\$YG	+9.90
\$B	+131.38
\$EN	-8.60

CED	BW	WN	YR	SC	Milk	CW	Marb	RE	Fat
+3	+2.6	+46	+83	+0.51	+29	+30	+0.98	+0.68	-0.014
Act. BW	Adj. WW	Adj. YW	Act. SC	ADG	Act. %IMF	Act. REA	Act. RibFat	Act. RmpFat	

This big framed bull brings frame size to his calves.

Lot NS Lust Complement 505
 DOB: 02/09/15 Bull 18207960 Tattoo: 505

Sire: Basin Franchise P142
 EF Complement 8088
 EF Everelda Entense 6117

Dam: K C F Bennett Absolute
 Hinksons Beauty 13 300
 Hinksons Beauty 11 135

\$W	+72.73
\$F	+135.60
\$G	+23.05
\$YG	-4.72
\$B	+180.01
\$EN	-17.98

CED	BW	WN	YR	SC	Milk	CW	Marb	RE	Fat
+8	+2.3	+77	+145	+0.96	+24	+70	+0.45	+0.53	+0.027
Act. BW	Adj. WW	Adj. YW	Act. SC	ADG	Act. %IMF	Act. REA	Act. RibFat	Act. RmpFat	

This is a unique bull that we were fortunate to pick up at the 2016 Tucumcari Bull Test. He ranks in the top % for: \$W-5%, \$F-1%, \$B-2%

Lot NS MLL Wave 2520
 DOB: 02/14/12 Bull 17282064 Tattoo: 2520

Sire: Gardens Highmark
 Gardens Wave
 Green Garden Lady 6255 S2

Dam: Mll Montana 7531
 Meads Ankony Lovana 180

\$W	+31.76
\$F	+42.73
\$G	+46.80
\$YG	+5.21
\$B	+134.29
\$EN	+15.99

CED	BW	WN	YR	SC	Milk	CW	Marb	RE	Fat
-3	+4.0	+49	+75	+1.13	+13	+29	+0.88	+0.60	+0.025
Act. BW	Adj. WW	Adj. YW	Act. SC	ADG	Act. %IMF	Act. REA	Act. RibFat	Act. RmpFat	
100	551	1,077	38.00	3.49					

A Wave son that was sold in 2013, but came back to us in 2016. You will find several of his sons in the sale.

Lot NS Mccall EF Impression 5028
 DOB: 03/07/15 Bull 18233017 Tattoo: 5028

Sire: Connealy Impression
 EF Impression 2648
 Bricton Burgess 8145

Dam: P A R Falcon Pride P319
 G P 838

\$W	+62.00
\$F	+77.11
\$G	+44.80
\$YG	+5.96
\$B	+135.19
\$EN	-7.50

CED	BW	WN	YR	SC	Milk	CW	Marb	RE	Fat
+6	+2.0	+67	+121	+0.89	+21	+42	+0.78	+0.63	+0.000
Act. BW	Adj. WW	Adj. YW	Act. SC	ADG	Act. %IMF	Act. REA	Act. RibFat	Act. RmpFat	

Top indexing bull from the 2016 Tucumcari Bull sale. This bull brings feed efficiency and carcass traits to his offspring.

Lot NS Packard Focus 29
 DOB: 01/17/09 Bull 16398233 Tattoo: 29

Sire: Mytty In Focus
 Packard In Focus 137
 Packard Emulass 75

Dam: Connealy Lead On
 Packard Firefly 36
 Packard Firefly 43

\$W	+46.57
\$F	+33.78
\$G	+43.33
\$YG	+9.23
\$B	+96.99
\$EN	-8.82

CED	BW	WN	YR	SC	Milk	CW	Marb	RE	Fat
+8	+0.9	+43	+81	+0.80	+30	+23	+0.62	+0.24	-0.048
Act. BW	Adj. WW	Adj. YW	Act. SC	ADG	Act. %IMF	Act. REA	Act. RibFat	Act. RmpFat	

An easy to get along with bull that was purchased from Montana in 2010. He was a top indexing bull in the Midland Bull test.

Lot NS P S E23
 DOB: 02/23/08 Bull 16131434 Tattoo: E23

Sire: Bon View New Design 208
 Connealy Whitman
 Ella Tina of Conanga 989

Dam: P S Miss 758
 P S 162 of Ext

\$W	+30.01
\$F	+39.34
\$G	+50.40
\$YG	+9.42
\$B	+119.90
\$EN	-7.34

CED	BW	WN	YR	SC	Milk	CW	Marb	RE	Fat
+0	+1.0	+36	+80	+0.86	+27	+29	+0.86	+0.58	-0.019
Act. BW	Adj. WW	Adj. YW	Act. SC	ADG	Act. %IMF	Act. REA	Act. RibFat	Act. RmpFat	

This bull was purchased in Montana from the Midland Bull Test where he was a top indexing bull. He was in use until 2017, so he has longevity to his name.

Lot NS RAB Body Builder 4011Z
 DOB: 02/07/12 Bull 17439829 Tattoo: 4011Z

Sire: C F Right Design 1802
 Summitcrest Complete 1P55
 Summitcrest Elba 1M17

Dam: S S Objective T510 0T26
 RAB MS Objective 4245W
 C-Bar Isabel P111

\$W	+59.05
\$F	+58.69
\$G	+44.03
\$YG	+11.38
\$B	+115.72
\$EN	-11.40

CED	BW	WN	YR	SC	Milk	CW	Marb	RE	Fat
+8	+1.4	+56	+101	+0.41	+28	+30	+0.58	+0.73	-0.024
Act. BW	Adj. WW	Adj. YW	Act. SC	ADG	Act. %IMF	Act. REA	Act. RibFat	Act. RmpFat	

Bull was purchased from the RA Brown sale in 2013, this bull brings a square hip to calves and some thickness to balance it out.

Lot NS Gardens Leverage Q074
 DOB: 03/07/14 Bull 17931906 Tattoo: Q074

Sire: Gardens Wave
 Gardens Leverage
 Green Garden Beau F244 S1

Dam: Gardens Wave
 Green Garden Rita F077
 Green Garden Rita 7071 S2

\$W	+40.93
\$F	+19.46
\$G	+46.21
\$YG	+1.03
\$B	+115.09
\$EN	-2.34

CED	BW	WN	YR	SC	Milk	CW	Marb	RE	Fat
+1	+1.9	+34	+69	+0.10	+32	+31	+1.04	+0.47	+0.042
Act. BW	Adj. WW	Adj. YW	Act. SC	ADG	Act. %IMF	Act. REA	Act. RibFat	Act. RmpFat	

Moderate framed bull was purchased from the Green Garden Angus Farm in Ellsworth, KS. Green Garden is well known for their efficiency and this bull is a good example of their progress gaining 4.62 lbs/day.

Lot
NS

MLL Future Direction 5572

DOB: 03/06/15 Bull 18321710 Tattoo: 5572

Mc Kenzie Land & Livestock

Sire:	B/R Future Direction 6171	\$W	+49.06
	J-C Future Direction 1110	\$F	+53.75
	J-C Faye 0837	\$G	+52.29
Dam:	RAB-GAR Objective 149u	\$YG	+11.58
	MLL 149u 2525	\$B	+113.89
	MLL Fame 0520	\$EN	-10.07

CED	BW	WN	YR	SC	Milk	CW	Marb	RE	Fat
+ 14	+ 0.2	+ 49	+ 93	+ 0.34	+ 27	+ 24	+ 0.85	+ 0.66	-0.024
Act. BW	Adj. WW	Adj. YW	Act. SC	ADG	Act. % IMF	Act. REA	Act. RibFat	Act. RmpFat	
72	570	1,136	36.00		4.31	13.60	0.24	0.28	

MLL bull that was the top marbeling bull in the 2015 calf crop.

Lot
NS

MLL Lookout 5638

DOB: 03/20/15 Bull 18321788 Tattoo: 5638

Mc Kenzie Land & Livestock

Sire:	J-C SS Objective 0852	\$W	+14.71
	PS Lookout 1253	\$F	+26.89
	J-C Beverly 0882	\$G	+47.39
Dam:	SPA Bluegrass 800	\$YG	+7.44
	MLL 800 2566	\$B	+80.10
	MLL Retail Product 8515	\$EN	+13.69

CED	BW	WN	YR	SC	Milk	CW	Marb	RE	Fat
+ 10	+ 0.2	+ 36	+ 72	+ 0.94	+ 11	+ 12	+ 0.82	+ 0.29	-0.003
Act. BW	Adj. WW	Adj. YW	Act. SC	ADG	Act. % IMF	Act. REA	Act. RibFat	Act. RmpFat	
	521	777			2.69	9.00	0.09	0.13	

MLL easy calving bull with positive \$EN.

Lot 1 **MLL 10X D194**
DOB: 09/12/16 **Bull 18848220** **Tattoo: D194**

Sire: Mytty In Focus
 A A R Ten X 7008 S A
 A A R Lady Kelton 5551
 Packard Focus 29

Dam: MLL Focus 3680
 MLL 821 1593

\$W	+63.56
\$F	+69.17
\$G	+41.00
\$YG	+6.26
\$B	+132.17
\$EN	-23.82

CED	BW	WN	YR	SC	Milk	CW	Marb	RE	Fat
I + 5	I + 1.0	I + 55	I + 108	I + 1.32	I + 36	I + 40	I + 0.64	I + 0.52	I - 0.013
Act. BW	Adj. WW	Adj. YW	Act. SC	ADG	Act. %IMF	Act. REA	Act. RibFat	Act. RmpFat	
76	617	1,003	44.00	0.00	3.21	11.10	0.15	0.16	

EPDs enhanced by 50K genomic test. %Rank in breed:
 RADG-20%,\$W-15%,\$F-20%,\$G-25%,\$B-30%



MLL 10X D194

Lot 2 **MLL Emblazon D198**
DOB: 09/18/16 **Bull 18858235** **Tattoo: D198**

Sire: O C C Emblazon 854E
 LD Emblazon 999
 SH Forever Lady 3124 5118
 J-C Fame 0212

Dam: Mll J-C Fame 7506
 Meads Joy of Erica 220

\$W	+46.22
\$F	+51.05
\$G	+23.33
\$YG	+4.62
\$B	+91.40
\$EN	+5.76

CED	BW	WN	YR	SC	Milk	CW	Marb	RE	Fat
I + 11	I + 0.6	I + 60	I + 91	I - 0.04	I + 12	I + 24	I + 0.25	I + 0.32	I + 0.007
Act. BW	Adj. WW	Adj. YW	Act. SC	ADG	Act. %IMF	Act. REA	Act. RibFat	Act. RmpFat	
70	525	891	38.00	0.00	2.80	10.10	0.17	0.25	

CALVING EASEEPDs enhanced by 50K genomic test. % rank in breed:
 CED-20%, WW-20%, DMI-20%,\$EN-20%

Lot 5 **MLL PF 29 D228**
DOB: 10/08/16 **Bull 18848234** **Tattoo: D228**

Sire: Packard In Focus 137
 Packard Focus 29
 Packard Firefly 36
 LK 07 Fame

Dam: MLL Fame 0538
 MLL Retail Product 7522

\$W	+37.48
\$F	+22.14
\$G	+26.64
\$YG	+1.88
\$B	+92.16
\$EN	-2.55

CED	BW	WN	YR	SC	Milk	CW	Marb	RE	Fat
I + 5	I + 2.2	I + 34	I + 60	I + 0.28	I + 31	I + 22	I + 0.38	I + 0.05	I + 0.003
Act. BW	Adj. WW	Adj. YW	Act. SC	ADG	Act. %IMF	Act. REA	Act. RibFat	Act. RmpFat	
75	533	904	40.00	0.00	2.57	11.10	0.21	0.14	

EPDs enhanced by 50K genomic test. % rank in breed: DMI-2%

Lot 3 **MLL Complement D210**
DOB: 10/02/16 **Bull 19047615** **Tattoo: D210**

Sire: Basin Franchise P142
 EF Complement 8088
 EF Everelda Entense 6117
 J-C Future Direction 1110

Dam: MLL Future Direction 4703
 MLL Future Design 2625

\$W	+55.18
\$F	+67.42
\$G	+33.52
\$YG	-0.25
\$B	+137.87
\$EN	-12.92

CED	BW	WN	YR	SC	Milk	CW	Marb	RE	Fat
+ 1	+ 2.1	+ 53	+ 96	+ 1.07	+ 30	+ 39	+ 0.61	+ 0.47	+ 0.039
Act. BW	Adj. WW	Adj. YW	Act. SC	ADG	Act. %IMF	Act. REA	Act. RibFat	Act. RmpFat	
75	556	980	39.00	0.00	3.09	10.10	0.16	0.12	

EPDs enhanced by 50K genomic test.



MLL COMPLEMENT D210

Lot 4 **MLL 123Z D242**
DOB: 10/08/16 **Bull 18973633** **Tattoo: D242**

Sire: LCC New Standard
 RAB New Standard 123Z
 RAB MS Objective 601U
 C R A Bextor 872 5205 608

Dam: MLL Bextor 9554
 Mll Merger 7510

\$W	+45.50
\$F	+46.16
\$G	+43.49
\$YG	+5.45
\$B	+125.21
\$EN	-6.33

CED	BW	WN	YR	SC	Milk	CW	Marb	RE	Fat
+ 9	+ 1.4	+ 47	+ 85	+ 0.29	+ 26	+ 32	+ 0.75	+ 0.58	+ 0.016
Act. BW	Adj. WW	Adj. YW	Act. SC	ADG	Act. %IMF	Act. REA	Act. RibFat	Act. RmpFat	
75	514	919			3.16	9.90	0.09	0.20	

CALVING EASE EPDs enhanced with genetic test. % Rank in breed:
 CED-25%,DMI-10%,Mar-20%,\$B-30%

Lot 6 **MLL 4011Z D263**
DOB: 10/16/16 **Bull 18848246** **Tattoo: D263**

Sire: Summitcrest Complete 1P55
 RAB Body Builder 4011Z
 RAB MS Objective 4245W
 SO Payweight 657-09

Dam: MLL L656 2619
 MS MLL J-C Fame 6524

\$W	+36.61
\$F	+60.29
\$G	+40.51
\$YG	+9.53
\$B	+130.20
\$EN	-1.95

CED	BW	WN	YR	SC	Milk	CW	Marb	RE	Fat
I + 4	I + 2.9	I + 52	I + 98	I + 0.38	I + 19	I + 37	I + 0.53	I + 0.66	I - 0.025
Act. BW	Adj. WW	Adj. YW	Act. SC	ADG	Act. %IMF	Act. REA	Act. RibFat	Act. RmpFat	
78	502	936	39.00	0.00	2.69	10.00	0.16	0.22	

EPDs enhanced by 50K genomic test. % rank in breed:
 Doc-10%,CEM-2%,\$G-25%,\$B-30%

Lot 7 MLL Total D289
 DOB: 12/02/16 Bull 18856153 Tattoo: D289

Sire: TC Total 410
 J-C Total 0922
 J-C Faye 0257
 J-C Future Direction 0952

Dam: MLL Future Direction 3678
 MLL Predestined 0510

\$W	+37.78
\$F	+21.19
\$G	+42.35
\$YG	+7.61
\$B	+98.22
\$EN	+5.33

CED	BW	WN	YR	SC	Milk	CW	Marb	RE	Fat
I + 4	I + 1.9	I + 43	I + 68	I + 0.34	I + 21	I + 21	I + 0.64	I + 0.36	I - 0.012
Act. BW	Adj. WW	Adj. YW	Act. SC	ADG	Act. %IMF	Act. REA	Act. RibFat	Act. RmpFat	
70	537	828	38.00	0.00	2.55	9.30	0.14	0.22	

EPDs enhanced by 50K genomic test. % rank in breed. DMI-15%, \$G-20%, \$YG-20%, \$EN-15%

Lot 10 MLL Absolute D180
 DOB: 08/31/16 Bull 18934529 Tattoo: D180

Sire: S A V Final Answer 0035
 K C F Bennett Absolute
 Thomas Miss Lucy 5152
 J-C Total 0922

Dam: MLL Total 4719
 MLL J-C Fame 0521

\$W	+60.49
\$F	+77.17
\$G	+31.74
\$YG	+7.45
\$B	+130.37
\$EN	-8.75

CED	BW	WN	YR	SC	Milk	CW	Marb	RE	Fat
+ 6	+ 0.3	+ 63	+ 114	+ 1.43	+ 22	+ 42	+ 0.37	+ 0.64	-0.014
Act. BW	Adj. WW	Adj. YW	Act. SC	ADG	Act. %IMF	Act. REA	Act. RibFat	Act. RmpFat	
60	507	931	37.00	0.00	3.04	9.20	0.11	0.12	

MODERATE CALVING EASE EPDs enhanced by 50K genomic test. %Rank: BW-25%, WW-15%, YW-15%, RADG-15%, SC-10%, RE-30%, SW-10%, \$F-10%, \$B-30%

Lot 8 MLL COMBINATION D188
 DOB: 09/13/16 Bull 624394580 Tattoo: D188

Sire: Connealy Consensus
 Connealy Combination 0188
 Black Cayra of Conanga 8127
 PS Lookout 1253

Dam: MLL Lookout 4731
 MLL E23 2617

Sire EPD: CED + 5; BW -0.8; WN + 55; YR + 96; Milk + 17
 Sire \$Values: \$W +52.59; \$F +69.20; \$G +35.76; \$B +146.84

\$W	
\$F	
\$G	
\$YG	
\$B	
\$EN	

CED	BW	WN	YR	SC	Milk	CW	Marb	RE	Fat
Act. BW	Adj. WW	Adj. YW	Act. SC	ADG	Act. %IMF	Act. REA	Act. RibFat	Act. RmpFat	
70	553		39.00	0.00	3.76	11.20	0.13	0.14	

registration pending

Lot 11 MLL Future Design D234
 DOB: 10/03/16 Bull 18880352 Tattoo: D234

Sire: RAB-EGL Future Design
 RAB-GAR Future Design 4518T
 RAB-GAR MS Load UP - 4870N
 J-C Far Krugerrand 0488

Dam: J-C Joy 0983
 J-C Joy 0744

\$W	+47.60
\$F	+53.91
\$G	+37.20
\$YG	+2.15
\$B	+129.73
\$EN	-4.32

CED	BW	WN	YR	SC	Milk	CW	Marb	RE	Fat
+ 12	-0.7	+ 45	+ 85	-0.08	+ 26	+ 34	+ 0.65	+ 0.29	+ 0.008
Act. BW	Adj. WW	Adj. YW	Act. SC	ADG	Act. %IMF	Act. REA	Act. RibFat	Act. RmpFat	
75	500	919	40.00	0.00	3.36	8.50	0.08	0.15	

CALVING EASEEPDs enhanced by 50K genomic test. % rank in breed: CED-15%, BW-15%, RADG-10%, DMI-10%, \$B-30%



Lot 12 MLL Total D243
 DOB: 10/10/16 Bull 18848238 Tattoo: D243

Sire: TC Total 410
 J-C Total 0922
 J-C Faye 0257
 LK 26 Buck

Dam: Mll 26 Buck 7536
 Meads Miss Blackcap 33

\$W	+25.62
\$F	-4.73
\$G	+49.19
\$YG	+9.49
\$B	+58.95
\$EN	+9.42

CED	BW	WN	YR	SC	Milk	CW	Marb	RE	Fat
I + 6	I - 0.3	I + 23	I + 39	I + 0.13	I + 26	I - 3	I + 0.81	I + 0.15	I - 0.015
Act. BW	Adj. WW	Adj. YW	Act. SC	ADG	Act. %IMF	Act. REA	Act. RibFat	Act. RmpFat	
76	489	819	40.00	0.00	2.43	9.80	0.08	0.19	

MODERATE CALVING EASE EPDs enhanced by 50K genomic test. % rank in breed: BW-15%, DMI-2%, Marb-20%, \$EN-10%, \$G-10%, \$YG-10

Lot 9 MLL 4011Z D282
 DOB: 11/02/16 Bull 18856155 Tattoo: D282

Sire: Summitcrest Complete 1P55
 RAB Body Builder 4011Z
 RAB MS Objective 4245W
 G A R Retail Product

Dam: MS MLL 503
 L K 45 Rose

\$W	+54.58
\$F	+74.99
\$G	+45.33
\$YG	+13.32
\$B	+153.07
\$EN	-20.31

CED	BW	WN	YR	SC	Milk	CW	Marb	RE	Fat
I + 1	I + 3.3	I + 60	I + 111	I + 0.18	I + 30	I + 47	I + 0.56	I + 0.90	I - 0.059
Act. BW	Adj. WW	Adj. YW	Act. SC	ADG	Act. %IMF	Act. REA	Act. RibFat	Act. RmpFat	
75	536	912	36.00	0.00	3.14	9.70	0.12	0.14	

USE ON MATURE COWSEPDs enhanced by 50K genomic test. % rank in breed: YW-15%, RADG-15%, Marb-4%, \$W-30%, \$F-15%, \$G-15%, \$YG-1%, \$B-10%

Lot 13 MLL Lookout D216
 DOB: 09/20/16 Bull 18848227 Tattoo: D216

Sire: J-C SS Objective 0852
 PS Lookout 1253
 J-C Beverly 0882
 H A R B Freedom 1156-288

Dam: MLL Freedom 3655
 MLL E23 0535

\$W	+44.35
\$F	+44.80
\$G	+46.18
\$YG	+4.08
\$B	+134.21
\$EN	+4.14

CED	BW	WN	YR	SC	Milk	CW	Marb	RE	Fat
I + 6	I + 1.7	I + 52	I + 90	I + 1.39	I + 18	I + 38	I + 0.90	I + 0.37	I - 0.006
Act. BW	Adj. WW	Adj. YW	Act. SC	ADG	Act. %IMF	Act. REA	Act. RibFat	Act. RmpFat	
70	590	900	41.00	0.00	2.36	9.60	0.07	0.12	

EPDs enhanced by 50K genomic test. % rank in breed: SC-15%, Marb-15%, CEM-2%, \$G-15%, \$EN-20%, \$B-30%

Lot 14 **MLL Total D249**
 DOB: 10/10/16 Bull 18856151 Tattoo: D249

Sire: TC Total 410
 J-C Total 0922
 J-C Faye 0257
 LK10 Final

Dam: MLL Final 2533
 MLL Merger 0534

\$W	+23.13
\$F	+10.71
\$G	+47.73
\$YG	+8.56
\$B	+67.36
\$EN	+18.70

CED	BW	WN	YR	SC	Milk	CW	Marb	RE	Fat
I + 7	I + 0.6	I + 34	I + 59	I - 0.05	I + 14	I + 5	I + 0.79	I + 0.49	I + 0.021
Act. BW	Adj. WW	Adj. YW	Act. SC	ADG	Act. %IMF	Act. REA	Act. RibFat	Act. RmpFat	
70	503	767	39.00	0.00	3.26	9.50	0.09	0.14	

MODERATE CALVING EASE EPDs enhanced by 50K genomic test. % rank in breed: DMI-20%,\$G-10,\$YG-15,\$EN-3%

Lot 18 **MLL Total D264**
 DOB: 10/12/16 Bull 18848247 Tattoo: D264

Sire: TC Total 410
 J-C Total 0922
 J-C Faye 0257
 J-C Future Direction 0952

Dam: MLL Future Direction 3684
 MLL 308 0543

\$W	+29.10
\$F	+17.48
\$G	+45.39
\$YG	+14.14
\$B	+86.32
\$EN	-0.02

CED	BW	WN	YR	SC	Milk	CW	Marb	RE	Fat
I + 3	I + 1.4	I + 37	I + 69	I + 0.26	I + 23	I + 18	I + 0.54	I + 0.54	I - 0.061
Act. BW	Adj. WW	Adj. YW	Act. SC	ADG	Act. %IMF	Act. REA	Act. RibFat	Act. RmpFat	
78	510	905	36.00	0.00	1.76	9.50	0.14	0.07	

EPDs enhanced by 50K genomic test. % rank in breed: DMI-20%,CEM-20%,Mar-15%,\$G-3%,\$YG-2%,\$EN-20%

Lot 15 **MLL Total D261**
 DOB: 10/16/16 Bull 18848245 Tattoo: D261

Sire: TC Total 410
 J-C Total 0922
 J-C Faye 0257
 SVA Precision Edge 3178

Dam: McCall ChampStock SAV 720T
 McCall ChampStock SAV221M

\$W	+30.89
\$F	+25.22
\$G	+25.12
\$YG	+11.03
\$B	+88.60
\$EN	+1.19

CED	BW	WN	YR	SC	Milk	CW	Marb	RE	Fat
I + 8	I - 0.1	I + 33	I + 66	I + 0.82	I + 25	I + 24	I + 0.16	I + 0.56	I - 0.030
Act. BW	Adj. WW	Adj. YW	Act. SC	ADG	Act. %IMF	Act. REA	Act. RibFat	Act. RmpFat	
70	443	809	38.00	0.00	2.94	10.60	0.11	0.12	

CALVING EASE EPDs enhanced by 50K genomic test. % rank in breed: BW-20%,RADG-15%,DMI-15%



Lot 16 **MLL Future Direction D236**
 DOB: 10/03/16 Bull 18856144 Tattoo: D236

Sire: B/R Future Direction 6171
 J-C Future Direction 1110
 J-C Faye 0837
 H A R B Freedom 1156-288

Dam: MLL Freedom 4657
 A6 Honey

\$W	+51.22
\$F	+44.79
\$G	+38.38
\$YG	+3.93
\$B	+140.17
\$EN	-13.28

CED	BW	WN	YR	SC	Milk	CW	Marb	RE	Fat
I + 13	I - 0.5	I + 46	I + 86	I + 0.35	I + 31	I + 44	I + 0.63	I + 0.40	I - 0.012
Act. BW	Adj. WW	Adj. YW	Act. SC	ADG	Act. %IMF	Act. REA	Act. RibFat	Act. RmpFat	
68	574	923	36.00	0.00	3.30	10.50	0.12	0.14	

CALVING EASE EPDs enhanced by 50K genomic test. % rank in breed: CED-5%,BW-15%,\$W-30%,CEM-2%,\$B-20%

Lot 19 **MLL Future Design D226**
 DOB: 10/01/16 Bull 18848232 Tattoo: D226

Sire: RAB-EGL Future Design
 RAB-GAR Future Design 4518T
 RAB-GAR MS Load UP - 4870N
 RAB-JR 004 3006T

Dam: MLL 3006T 0600
 Meads Joy of Erica 220

\$W	+34.85
\$F	+37.32
\$G	+30.08
\$YG	+4.90
\$B	+118.05
\$EN	+2.56

CED	BW	WN	YR	SC	Milk	CW	Marb	RE	Fat
I + 5	I + 1.7	I + 41	I + 78	I + 0.40	I + 22	I + 36	I + 0.39	I + 0.42	I - 0.005
Act. BW	Adj. WW	Adj. YW	Act. SC	ADG	Act. %IMF	Act. REA	Act. RibFat	Act. RmpFat	
78	525	935	42.00	0.00	3.30	9.10	0.08	0.13	

EPDs enhanced by 50K genomic test. % rank in breed: DMI-25%,\$EN-25%

Lot 17 **MLL Total D250**
 DOB: 10/08/16 Bull 18848239 Tattoo: D250

Sire: TC Total 410
 J-C Total 0922
 J-C Faye 0257
 P S E23

Dam: MLL E23 3664
 J-C New Design 0828

\$W	+32.88
\$F	+36.82
\$G	+49.46
\$YG	+11.12
\$B	+108.06
\$EN	-1.81

CED	BW	WN	YR	SC	Milk	CW	Marb	RE	Fat
I - 1	I + 1.7	I + 44	I + 83	I + 0.23	I + 21	I + 25	I + 0.76	I + 0.61	I - 0.027
Act. BW	Adj. WW	Adj. YW	Act. SC	ADG	Act. %IMF	Act. REA	Act. RibFat	Act. RmpFat	
75	505	881	39.00	0.00	3.77	11.30	0.09	0.12	

USE ON MATURE COWS EPDs enhanced by 50K genomic test. % rank in breed: Marb-20%,RE-30%,\$G-10%,\$G-4%

Lot 20 **MLL Lookout Commercial D290**
 DOB: 10/18/16 Bull 624394671 Tattoo: D290

Sire: J-C SS Objective 0852
 PS Lookout 1253
 J-C Beverly 0882
 Connealy Contrast

Dam: MLL CONTRAST 3632
 MLL FOCUS C1040

Sire EPD: CED + 15; BW -0.3; WN + 37; YR + 68; Milk + 15
 Sire \$Values: \$W +26.38; \$F +18.12; \$G +49.28; \$B +94.45

\$W	
\$F	
\$G	
\$YG	
\$B	
\$EN	

CED	BW	WN	YR	SC	Milk	CW	Marb	RE	Fat
Act. BW	Adj. WW	Adj. YW	Act. SC	ADG	Act. %IMF	Act. REA	Act. RibFat	Act. RmpFat	
70	517	959	41.00	0.00	3.37	9.30	0.07	0.18	

CALVING EASE 50K genetic data test indicates: Top %: CED-12%, BW-19%,Marb-7%, Tend-19%,SC-4%, Doc-26%

Lot 21 **MLL Total D262**
 DOB: 10/16/16 Bull 18856152 Tattoo: D262

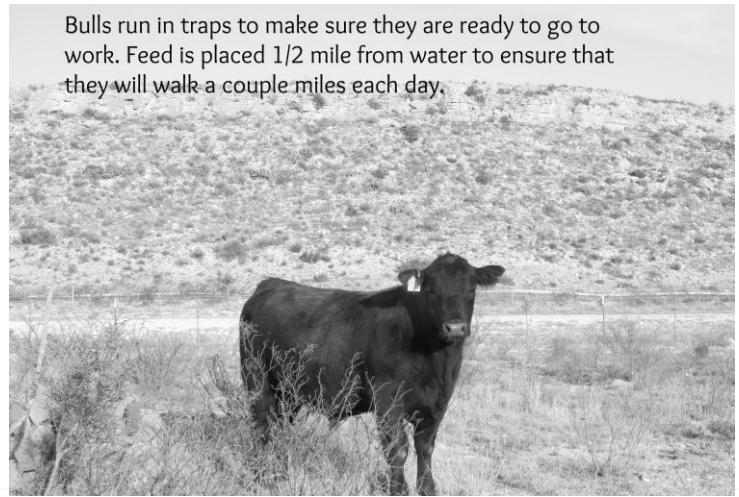
Sire: TC Total 410
 J-C Total 0922
 J-C Faye 0257
 RAB-GAR Future Design 4518T

Dam: MLL 4518T 2591
 MS MLL 401

\$W	+42.04
\$F	+46.33
\$G	+42.79
\$YG	+11.81
\$B	+131.11
\$EN	-5.57

CED	BW	WN	YR	SC	Milk	CW	Marb	RE	Fat
I + 5	I + 0.7	I + 48	I + 88	I + 0.41	I + 23	I + 37	I + 0.53	I + 0.84	I - 0.028
Act. BW	Adj. WW	Adj. YW	Act. SC	ADG	Act. %IMF	Act. REA	Act. RibFat	Act. RmpFat	
70	493	917	40.00	0.00	2.66	11.10	0.16	0.16	

EPDs enhanced by 50K genomic test. % rank in breed: RADG-20%, RE-10%,\$G-20%,\$B-30%



Lot 22 **MLL Future Design D300**
 DOB: 11/27/16 Bull 18848267 Tattoo: D300

Sire: RAB-EGL Future Design
 RAB-GAR Future Design 4518T
 RAB-GAR MS Load UP - 4870N
 GAR Objective 561

Dam: J-C Beverly 0904
 B&H Beverly 9946

\$W	+46.21
\$F	+22.71
\$G	+39.06
\$YG	+7.81
\$B	+84.12
\$EN	-5.45

CED	BW	WN	YR	SC	Milk	CW	Marb	RE	Fat
I + 11	I + 0.4	I + 43	I + 75	I + 0.68	I + 28	I + 20	I + 0.54	I + 0.43	I - 0.004
Act. BW	Adj. WW	Adj. YW	Act. SC	ADG	Act. %IMF	Act. REA	Act. RibFat	Act. RmpFat	
75	487	839	40.00	0.00	2.68	9.40	0.15	0.15	

CALVING EASE EPDs enhanced by 50K genomic test. % rank in breed.CED-15%,CEM-2%

Lot 25 **MLL 10X D202**
 DOB: 09/15/16 Bull 18848222 Tattoo: D202

Sire: Mytty In Focus
 A A R Ten X 7008 S A
 A A R Lady Kelton 5551
 SPA Bluegrass 800

Dam: MLL 800 3640
 MLL Pendleton 9543

\$W	+48.68
\$F	+39.28
\$G	+31.30
\$YG	+10.61
\$B	+107.59
\$EN	-1.90

CED	BW	WN	YR	SC	Milk	CW	Marb	RE	Fat
I + 11	I + 1.6	I + 48	I + 90	I + 1.33	I + 25	I + 36	I + 0.29	I + 0.69	I - 0.031
Act. BW	Adj. WW	Adj. YW	Act. SC	ADG	Act. %IMF	Act. REA	Act. RibFat	Act. RmpFat	
75	568	926	39.00	0.00	2.59	9.60	0.09	0.09	

CALVING EASE EPDs enhanced by 50K genomic test. % rank in breed: CED-15%, SC-15%,RE-20%

Lot 23 **MLL Future Direction D227**
 DOB: 10/08/16 Bull 18848233 Tattoo: D227

Sire: B/R Future Direction 6171
 J-C Future Direction 1110
 J-C Faye 0837
 KLA Peacemaker K526

Dam: S C P 939
 Ricketts A5 of L516

\$W	+40.00
\$F	+41.50
\$G	+36.02
\$YG	+7.81
\$B	+112.39
\$EN	-3.40

CED	BW	WN	YR	SC	Milk	CW	Marb	RE	Fat
I + 5	I + 1.3	I + 43	I + 78	I + 0.46	I + 25	I + 28	I + 0.46	I + 0.44	I - 0.017
Act. BW	Adj. WW	Adj. YW	Act. SC	ADG	Act. %IMF	Act. REA	Act. RibFat	Act. RmpFat	
75	461	899	38.00	0.00	2.93	10.80	0.13	0.17	

EPDs enhanced by 50K genomic test. % rank in breed: RADG-25%,DMI-10%

Lot 26 **MLL 10X D192**
 DOB: 09/12/16 Bull 18848218 Tattoo: D192

Sire: Mytty In Focus
 A A R Ten X 7008 S A
 A A R Lady Kelton 5551
 Packard Focus 29

Dam: MLL Focus 3686
 MLL J-C Fame 0521

\$W	+47.16
\$F	+60.85
\$G	+34.44
\$YG	-0.61
\$B	+119.04
\$EN	-3.73

CED	BW	WN	YR	SC	Milk	CW	Marb	RE	Fat
I + 10	I - 0.4	I + 49	I + 102	I + 0.96	I + 23	I + 38	I + 0.65	I + 0.21	I + 0.014
Act. BW	Adj. WW	Adj. YW	Act. SC	ADG	Act. %IMF	Act. REA	Act. RibFat	Act. RmpFat	
80	600	1,034	41.00	0.00	3.14	11.10	0.16	0.18	

CALVING EASE EPDs enhanced by 50K genomic test. %Rank in breed: CED-10%,BW-20%,YW-25%,MARB-30%,\$F-30%

Lot 24 **MLL Objective D222**
 DOB: 10/03/16 Bull 18848229 Tattoo: D222

Sire: S S Traveler 6807 T510
 S S Objective T510 0T26
 S S Miss Rita R011 7R8
 Packard Focus 29

Dam: MLL Focus 1612
 MLL 6005 New Design 9577

\$W	+56.27
\$F	+78.78
\$G	+42.70
\$YG	+4.36
\$B	+150.57
\$EN	-11.49

CED	BW	WN	YR	SC	Milk	CW	Marb	RE	Fat
I + 7	I + 3.2	I + 64	I + 114	+ 0.92	I + 24	I + 46	I + 0.76	I + 0.33	I - 0.028
Act. BW	Adj. WW	Adj. YW	Act. SC	ADG	Act. %IMF	Act. REA	Act. RibFat	Act. RmpFat	
80	508	922	41.00	0.00	3.51	8.60	0.11	0.17	

CALVING EASE EPDs enhanced by 50K genomic test. % rank in breed: WW-15%,YR-10%,Marb-20%,\$W-25%,\$F-10%,\$G-20%,\$B-10%

Lot 27 **MLL 1540 D266**
 DOB: 10/04/16 Bull 18982780 Tattoo: D266

Sire: G A R New Design 5050
 RRR 1540 5050 2048 846 552
 RRR 2048 846 552 Univ 3298
 J-C Future Direction 0952

Dam: MLL Future Direction 3658
 Mll 26 Buck 7536

\$W	+27.55
\$F	+33.99
\$G	+38.94
\$YG	+5.89
\$B	+105.59
\$EN	+4.11

CED	BW	WN	YR	SC	Milk	CW	Marb	RE	Fat
I + 1	I + 2.5	I + 43	I + 81	I + 0.62	I + 18	I + 29	I + 0.59	I + 0.26	I - 0.021
Act. BW	Adj. WW	Adj. YW	Act. SC	ADG	Act. %IMF	Act. REA	Act. RibFat	Act. RmpFat	
75	546	912	40.00	0.00	3.17	7.70	0.12	0.17	

EPDs enhanced by 50K genomic test. % rank in breed: Easy keeping bull that ranks in the top 25% for \$EN.

Lot 29 **MLL Future Design D233**
 DOB: 10/03/16 Bull 18848236 Tattoo: D233

Sire: RAB-EGL Future Design
 RAB-GAR Future Design 4518T
 RAB-GAR MS Load UP - 4870N
 J-C Total 0922

Dam: MLL Total 1627
 Meads Monica Power 93

\$W	+40.73
\$F	+20.10
\$G	+40.61
\$YG	+8.97
\$B	+117.78
\$EN	+9.54

CED	BW	WN	YR	SC	Milk	CW	Marb	RE	Fat
+1.6	-1.04	+38	+58	+0.49	+22	+26	+0.55	+0.71	+0.007
Act. BW	Adj. WW	Adj. YW	Act. SC	ADG	Act. %IMF	Act. REA	Act. RibFat	Act. RmpFat	
70	544	856	36.00	0.00	3.35	10.40	0.09	0.16	

MODERATE CALVING EASE EPDs enhanced by genetic testing. % rank in breed: BW-15%, DMI-1%, RE-20%, \$G-25%

Lot 32 **MLL PF 29 D280**
 DOB: 10/20/16 Bull 18848256 Tattoo: D280

Sire: Packard In Focus 137
 Packard Focus 29
 Packard Firefly 36
 M C M 308/042 X 037

Dam: MLL 308 1531
 MS MLL 445

\$W	+49.13
\$F	+28.44
\$G	+32.25
\$YG	+10.66
\$B	+83.24
\$EN	-10.35

CED	BW	WN	YR	SC	Milk	CW	Marb	RE	Fat
+1.5	+1.5	+42	+73	+0.79	+33	+19	+0.31	+0.36	-0.042
Act. BW	Adj. WW	Adj. YW	Act. SC	ADG	Act. %IMF	Act. REA	Act. RibFat	Act. RmpFat	
70	494	875	39.00	0.00	3.50	7.90	0.07	0.18	

EPDs enhanced by 50K genomic test.



Lot 33 **MLL Total D244**
 DOB: 10/10/16 Bull 18934531 Tattoo: D244

Sire: TC Total 410
 J-C Total 0922
 J-C Faye 0257
 RAB-GAR Objective 149u

Dam: MLL 149u 2540
 MLL Focus 0507

\$W	+41.01
\$F	+30.52
\$G	+49.07
\$YG	+8.36
\$B	+105.27
\$EN	+5.76

CED	BW	WN	YR	SC	Milk	CW	Marb	RE	Fat
+11	-0.4	+48	+79	+0.21	+17	+23	+0.85	+0.60	+0.005
Act. BW	Adj. WW	Adj. YW	Act. SC	ADG	Act. %IMF	Act. REA	Act. RibFat	Act. RmpFat	
78	513	879	40.00	0.00	3.71	10.70	0.18	0.16	

This bull sells as commercial
 CALVING EASE EPDs enhanced by 50K genomic test. % rank in breed: CED-15%, BW-20%, Marb-15%, \$EN-15%, \$G-10%

Lot 30 **MLL Emblazon D203**
 DOB: 09/16/16 Bull 19012668 Tattoo: D203

Sire: O C C Emblazon 854E
 LD Emblazon 999
 SH Forever Lady 3124 5118
 Connealy Forward

Dam: MLL Forward 3634
 MLL Fame 8544

\$W	+57.64
\$F	+46.06
\$G	+33.63
\$YG	+10.12
\$B	+89.55
\$EN	-7.63

CED	BW	WN	YR	SC	Milk	CW	Marb	RE	Fat
+6	+1.8	+52	+87	+0.09	+29	+20	+0.35	+0.56	-0.013
Act. BW	Adj. WW	Adj. YW	Act. SC	ADG	Act. %IMF	Act. REA	Act. RibFat	Act. RmpFat	
80	657	921	42.00	0.00	3.16	10.50	0.12	0.22	

MODERATE CALVING EASE EPDs enhanced by 50K genomic test. % rank in breed: DMI-20%, \$W-25%

Lot 34 **MLL Leverage D267**
 DOB: 10/25/16 Bull 18856148 Tattoo: D267

Sire: Gardens Leverage
 Gardens Leverage Q074
 Green Garden Rita F077
 RAB-GAR Future Design 4518T

Dam: MLL 4518T 4735
 J-C Lady 0992

\$W	+19.06
\$F	+0.53
\$G	+47.46
\$YG	+5.87
\$B	+87.35
\$EN	+18.07

CED	BW	WN	YR	SC	Milk	CW	Marb	RE	Fat
+7	+1.8	+26	+51	+0.16	+19	+16	+0.88	+0.31	+0.008
Act. BW	Adj. WW	Adj. YW	Act. SC	ADG	Act. %IMF	Act. REA	Act. RibFat	Act. RmpFat	
70	461	941	40.00	0.00	3.51	9.70	0.13	0.21	

CALVING EASE EPDs enhanced by 50K genomic test. % rank in breed: DMI-25%, CEM-2%, Marb-15%, \$G-10%, \$EN-4%

Lot 31 **MLL 123Z D284**
 DOB: 10/27/16 Bull 18848259 Tattoo: D284

Sire: LCC New Standard
 RAB New Standard 123Z
 RAB MS Objective 601U
 RAB-GAR Future Design 4518T

Dam: MLL 4518T 2614
 Meads Blossom 10

\$W	+37.11
\$F	+52.36
\$G	+27.82
\$YG	+5.77
\$B	+113.77
\$EN	-3.15

CED	BW	WN	YR	SC	Milk	CW	Marb	RE	Fat
+7	+1.9	+45	+87	+0.60	+23	+33	+0.32	+0.57	+0.010
Act. BW	Adj. WW	Adj. YW	Act. SC	ADG	Act. %IMF	Act. REA	Act. RibFat	Act. RmpFat	
75	489	913	38.00	0.00	2.85	10.20	0.17	0.14	

EPDs enhanced by 50K genomic test. % rank in breed: RADG-20%, DMI-20%, CEM-20%

Lot 35 **MLL E23 D297**
 DOB: 11/25/16 Bull 18848264 Tattoo: D297

Sire: Connealy Whitman
 P S E23
 P S Miss 758
 RAB-GAR Objective 149u

Dam: MLL 149u 1578
 J-C Cathy 0924

\$W	+41.18
\$F	+25.88
\$G	+38.15
\$YG	+8.74
\$B	+102.45
\$EN	-5.94

CED	BW	WN	YR	SC	Milk	CW	Marb	RE	Fat
+10	-0.8	+39	+77	-0.11	+28	+30	+0.49	+0.48	-0.025
Act. BW	Adj. WW	Adj. YW	Act. SC	ADG	Act. %IMF	Act. REA	Act. RibFat	Act. RmpFat	
78	548	938	40.00	0.00	2.20	10.80	0.15	0.12	

CALVING EASE EPDs enhanced by 50K genomic test. % rank in breed: CED-20%, BW-10%, YG-15%

Lot 36 **MLL Lookout D265**
 DOB: 10/22/16 Bull 18856154 Tattoo: D265

Sire: J-C SS Objective 0852
 PS Lookout 1253
 J-C Beverly 0882
 RRR 1540 5050 2048 846 552

Dam: MLL 5050 3644
 MLL Merger 0561

\$W	+29.53
\$F	+33.75
\$G	+53.30
\$YG	+12.88
\$B	+108.50
\$EN	+6.55

CED	BW	WN	YR	SC	Milk	CW	Marb	RE	Fat
1+4	1+2.4	1+44	1+76	+0.81	1+17	1+20	1+0.84	1+0.57	1-0.044
Act. BW	Adj. WW	Adj. YW	Act. SC	ADG	Act. %IMF	Act. REA	Act. RibFat	Act. RmpFat	
70	552	853	39.00	0.00	2.77	10.20	0.17	0.13	

EPDs enhanced by 50k genomic test. %rank in breed: \$EN-15%,Mar-20%

Lot 39 **MLL 4011Z C628**
 DOB: 10/16/16 Bull 624394559 Tattoo: C628

Sire: Summitcrest Complete 1P55
 RAB Body Builder 4011Z
 RAB MS Objective 4245W
 ALC Big Eye D09N

Dam: MLL BIG EYE 9014
 FALCON SEABOARD 314M

Sire EPD: CED + 8; BW + 1.4; WN + 56; YR + 101; Milk + 28
 Sire \$Values: \$W +59.05; \$F +58.69; \$G +44.03; \$B +115.72

\$W	
\$F	
\$G	
\$YG	
\$B	
\$EN	

CED	BW	WN	YR	SC	Milk	CW	Marb	RE	Fat
Act. BW	Adj. WW	Adj. YW	Act. SC	ADG	Act. %IMF	Act. REA	Act. RibFat	Act. RmpFat	
70	544	930	39.00	0.00	3.58	9.30	0.16	0.18	

COMMERCIAL Genetic testing suggests that this is going to be a big growthy bull with above average rib eye and carcass traits. Should be used on mature cows.

Lot 37 **MLL TOTAL C625**
 DOB: 10/08/16 Bull 624394556 Tattoo: C625

Sire: TC Total 410
 J-C Total 0922
 J-C Faye 0257

Dam: MLL COMMERCIAL COW

Sire EPD: CED + 5; BW -0.2; WN + 38; YR + 67; Milk + 23
 Sire \$Values: \$W +35.31; \$F +15.98; \$G +50.67; \$B +80.92

\$W	
\$F	
\$G	
\$YG	
\$B	
\$EN	

CED	BW	WN	YR	SC	Milk	CW	Marb	RE	Fat
Act. BW	Adj. WW	Adj. YW	Act. SC	ADG	Act. %IMF	Act. REA	Act. RibFat	Act. RmpFat	
75	532	974	40.00	0.00	3.06	10.30	0.14	0.11	

COMMERCIAL
 Genetic tests suggests this is going to be a big fast growing bull, should be used on mature cows.

Lot 40 **MLL COMPLEMENT D186**
 DOB: 09/12/16 Bull 624394578 Tattoo: D186

Sire: Basin Franchise P142
 EF Complement 8088
 EF Everelda Entense 6117
 RAB-GAR Future Design 4518T

Dam: MLL FUTURE DESIGN C4712
 MLL RETAIL PRODUCT 6532

Sire EPD: CED + 11; BW + 0.1; WN + 59; YR + 111; Milk + 33
 Sire \$Values: \$W +83.81; \$F +75.50; \$G +27.33; \$B +129.99

\$W	
\$F	
\$G	
\$YG	
\$B	
\$EN	

CED	BW	WN	YR	SC	Milk	CW	Marb	RE	Fat
Act. BW	Adj. WW	Adj. YW	Act. SC	ADG	Act. %IMF	Act. REA	Act. RibFat	Act. RmpFat	
80	536	1,072	40.00	0.00	3.61	10.20	0.13	0.20	

COMMERCIAL **CALVING EASE** Genetic data suggests this bull is an easier calving lighter birth weight bull with good carcass traits.



Lot 43 **MLL ABSOLUTE C620**
 DOB: 09/12/16 Bull 624394551 Tattoo: C620

Sire: S A V Final Answer 0035
 K C F Bennett Absolute
 Thomas Miss Lucy 5152
 P S E23

Dam: MLL E23 C4695
 MLL RETAIL PRODUCT 6525

Sire EPD: CED + 11; BW -0.2; WN + 63; YR + 117; Milk + 18
 Sire \$Values: \$W +64.59; \$F +88.16; \$G +38.84; \$B +155.66

\$W	
\$F	
\$G	
\$YG	
\$B	
\$EN	

CED	BW	WN	YR	SC	Milk	CW	Marb	RE	Fat
Act. BW	Adj. WW	Adj. YW	Act. SC	ADG	Act. %IMF	Act. REA	Act. RibFat	Act. RmpFat	
68	569	927	38.00	0.00	2.91	12.40	0.10	0.15	

COMMERCIAL A good all around commercial bull with great carcass qualities!

Lot 38 **MLL 123Z C635**
 DOB: 10/12/16 Bull 624394570 Tattoo: C635

Sire: LCC New Standard
 RAB New Standard 123Z
 RAB MS Objective 601U

Dam: Ricketts A59

Sire EPD: CED + 11; BW -0.5; WN + 44; YR + 80; Milk + 29
 Sire \$Values: \$W +46.11; \$F +47.07; \$G +39.92; \$B +106.82

\$W	
\$F	
\$G	
\$YG	
\$B	
\$EN	

CED	BW	WN	YR	SC	Milk	CW	Marb	RE	Fat
Act. BW	Adj. WW	Adj. YW	Act. SC	ADG	Act. %IMF	Act. REA	Act. RibFat	Act. RmpFat	
75	482	906	40.00	0.00	3.45	10.60	0.22	0.19	

COMMERCIAL
 Genetic suggests that this bull is a moderate birth weight bull and will be moderate growth.

Lot 44 **MLL 10X C640**
 DOB: 09/16/16 Bull 624394565 Tattoo: C640

Sire: Mytty In Focus
 A A R Ten X 7008 S A
 A A R Lady Kelton 5551
 M C M 308/042 X 037

Dam: MLL FD9836 1625
 MLL RETAIL PRODUCT 6523

Sire EPD: CED + 9; BW + 0.7; WN + 64; YR + 123; Milk + 23
 Sire \$Values: \$W +71.11; \$F +91.05; \$G +47.82; \$B +160.79

\$W	
\$F	
\$G	
\$YG	
\$B	
\$EN	

CED	BW	WN	YR	SC	Milk	CW	Marb	RE	Fat
Act. BW	Adj. WW	Adj. YW	Act. SC	ADG	Act. %IMF	Act. REA	Act. RibFat	Act. RmpFat	
78	628				2.17	11.20	0.14	0.16	

COMMERCIAL **CALVING EASE** Genetic data suggests that this is a calving ease/light birth weight bull.



MLL PAYWEIGHT E015

Lot **45** MLL Payweight E015
 DOB: 01/22/17 Bull 18981031 Tattoo: E015

Sire: Basin Payweight 0065
 Basin Payweight 1682
 21AR O Lass 7017
 RAB-GAR Future Design 4518T
 Dam: MLL 4518T 3564
 Mill Merger 7532

\$W	+57.26
\$F	+75.58
\$G	+8.40
\$YG	-5.69
\$B	+127.24
\$EN	-3.77

CED	BW	WN	YR	SC	Milk	CW	Marb	RE	Fat
+ 1	+ 2.0	+ 60	+ 104	-0.36	+ 22	+ 47	+ 0.16	+ 0.10	+ 0.023
Act. BW	Adj. WW	Adj. YW	Act. SC	ADG	Act. %IMF	Act. REA	Act. RibFat	Act. RmpFat	
687	1,209	38.00	0.00	3.74	13.80	0.23	0.36		

EPDs enhanced by 50k genomic test. % Rank in breed: WW-25%, YW-30%, RADG-30%, DMI-15%, MH-10%, CW-30%, \$W-25%, \$EN-20%

Lot **48** MLL Total E038
 DOB: 02/07/17 Bull 19045111 Tattoo: E038

Sire: TC Total 410
 J-C Total 0922
 J-C Faye 0257
 S S Objective T510 0T26
 Dam: MLL Objective 2519
 MLL Predestined 9511

\$W	+48.18
\$F	+21.04
\$G	+45.27
\$YG	+4.85
\$B	+101.78
\$EN	-8.29

CED	BW	WN	YR	SC	Milk	CW	Marb	RE	Fat
+ 7	+ 0.9	+ 48	+ 81	-0.12	+ 27	+ 29	+ 0.84	+ 0.37	+ 0.002
Act. BW	Adj. WW	Adj. YW	Act. SC	ADG	Act. %IMF	Act. REA	Act. RibFat	Act. RmpFat	
80	528	1,277	39.00	0.00	3.79	13.00	0.21	0.28	

MODERATE CALVING EASE EPDs enhanced by 50k genomic test.



MLL TOTAL E038

Lot **46** MLL 10X E009
 DOB: 01/22/17 Bull 18834674 Tattoo: E009

Sire: Mytty In Focus
 A A R Ten X 7008 S A
 A A R Lady Kelton 5551
 RAB-GAR Objective 149u
 Dam: MLL 149u 2575
 MLL Fame 0546

\$W	+57.36
\$F	+69.79
\$G	+40.82
\$YG	+1.98
\$B	+145.32
\$EN	-14.44

CED	BW	WN	YR	SC	Milk	CW	Marb	RE	Fat
+ 12	+ 0.6	+ 59	+ 106	+ 0.71	+ 26	+ 44	+ 0.78	+ 0.46	+ 0.012
Act. BW	Adj. WW	Adj. YW	Act. SC	ADG	Act. %IMF	Act. REA	Act. RibFat	Act. RmpFat	
75	605	1,112	38.00	0.00	4.45	11.40	0.16	0.26	

CALVING EASE EPDs enhanced by 50k genomic test. % Rank in breed: CED-10%, WW-20%, YW-20%, HP-20%, CEM-3, MARB-20%, \$W-20%, \$F-20%, \$G-25%, \$B-15%

Lot **49** MLL E23 E115
 DOB: 02/27/17 Bull 18953125 Tattoo: E115

Sire: Connealy Whitman
 P S E23
 P S Miss 758
 J-C Future Direction 0952
 Dam: MLL FD 0952 3567
 MLL Predestined 821 0612

\$W	+38.07
\$F	+48.68
\$G	+42.86
\$YG	+8.12
\$B	+129.92
\$EN	-6.30

CED	BW	WN	YR	SC	Milk	CW	Marb	RE	Fat
+ 1	+ 1.6	+ 47	+ 90	+ 1.22	+ 23	+ 37	+ 0.64	+ 0.59	+ 0.018
Act. BW	Adj. WW	Adj. YW	Act. SC	ADG	Act. %IMF	Act. REA	Act. RibFat	Act. RmpFat	
75	626	1,127	40.00	0.00	4.19	13.10	0.20	0.36	

EPDs enhanced by 50k genomic test. % Rank in breed: \$G-20%

Lot **47** MLL Future Design E053
 DOB: 02/07/17 Bull 18953102 Tattoo: E053

Sire: RAB-EGL Future Design
 RAB-GAR Future Design 4518T
 RAB-GAR MS Load UP - 4870N
 MCC Daybreak
 Dam: MLL Daybreak 1510
 MLL Design 308 9539

\$W	+41.37
\$F	+34.38
\$G	+36.16
\$YG	+5.63
\$B	+113.63
\$EN	-0.93

CED	BW	WN	YR	SC	Milk	CW	Marb	RE	Fat
+ 7	+ 1.0	+ 42	+ 72	+ 0.77	+ 25	+ 28	+ 0.52	+ 0.46	+ 0.007
Act. BW	Adj. WW	Adj. YW	Act. SC	ADG	Act. %IMF	Act. REA	Act. RibFat	Act. RmpFat	
75	633	1,041	38.00	0.00	3.68	13.30	0.17	0.25	

CALVING EASE EPDs enhanced by 50k genomic test. % Rank in breed: CED-25%, BW-20%, DMI-5%, \$EN-30%

Lot **50** MLL All In E564
 DOB: 02/21/17 Bull 18856549 Tattoo: E564

Sire: A A R Ten X 7008 S A
 Deer Valley All In
 Deer Valley Rita 0274
 ALC Big Eye D09N
 Dam: MLL Big Eye 3541
 MLL Tender Ten 1504

\$W	+58.76
\$F	+31.73
\$G	+42.69
\$YG	+6.92
\$B	+111.78
\$EN	-8.41

CED	BW	WN	YR	SC	Milk	CW	Marb	RE	Fat
+ 11	+ 0.4	+ 50	+ 79	+ 1.20	+ 30	+ 28	+ 0.67	+ 0.47	-0.004
Act. BW	Adj. WW	Adj. YW	Act. SC	ADG	Act. %IMF	Act. REA	Act. RibFat	Act. RmpFat	
70	604	1,122	39.00	0.00	3.87	13.90	0.26	0.24	

CALVING EASE EPDs enhanced by 50k genomic test. % rank in breed: CED-15%, BW-30%, DMI-30%, \$C-20%, CEM-15%, \$W-20%, \$G-20%, \$YG-25%

Lot 51 **MLL E23 E067**
DOB: 02/06/17 **Bull** **18976259** **Tattoo: E067**

Sire: Connealy Whitman
P S E23
P S Miss 758
LK 07 Fame

Dam: MLL Fame 3531
J-C Cathy 0924

\$W	+34.15
\$F	+29.90
\$G	+41.50
\$YG	+3.71
\$B	+125.48
\$EN	-6.30

CED	BW	WN	YR	SC	Milk	CW	Marb	RE	Fat
+ 1	+ 0.9	+ 35	+ 72	1 + 0.85	+ 29	1 + 35	1 + 0.74	1 + 0.44	1 + 0.010
Act. BW	Adj. WW	Adj. YW	Act. SC	ADG	Act. %IMF	Act. REA	Act. RibFat	Act. RmpFat	
75	605	1,149	39.00	0.00	3.97	13.40	0.30	0.32	

EPDs enhanced by 50k genomic test. % Rank in breed: \$DMI-30%, MAR-25%, \$G-20%



Lot 52 **MLL Objective E512**
DOB: 01/10/17 **Bull** **19006979** **Tattoo: E512**

Sire: S S Traveler 6807 T510
S S Objective T510 OT26
S S Miss Rita R011 7R8
Connealy Counselor

Dam: MLL Counselor 5503
MLL 4518T 3564

\$W	+69.30
\$F	+55.32
\$G	+42.12
\$YG	+7.38
\$B	+114.40
\$EN	-9.41

CED	BW	WN	YR	SC	Milk	CW	Marb	RE	Fat
+ 10	+ 2.9	+ 63	+ 108	-0.02	+ 29	+ 35	+ 0.64	+ 0.57	-0.009
Act. BW	Adj. WW	Adj. YW	Act. SC	ADG	Act. %IMF	Act. REA	Act. RibFat	Act. RmpFat	
85	633	1,105	37.00	0.00	4.17	12.80	0.16	0.19	

CALVING EASE EPDs enhanced by 50k genetic test. % Rank in breed: CED-20%, WW-15%, YW-20%, \$W-10%, \$G-20%, \$YG-20%

Lot 55 **MLL Future Design E034**
DOB: 02/03/17 **Bull** **18953099** **Tattoo: E034**

Sire: RAB-EGL Future Design
RAB-GAR Future Design 4518T
RAB-GAR MS Load UP - 4870N
RAB-GAR Objective 149u

Dam: MLL 149u 1605
MLL 6005 New Design 9541

\$W	+57.37
\$F	+27.31
\$G	+33.96
\$YG	+4.94
\$B	+137.54
\$EN	-6.57

CED	BW	WN	YR	SC	Milk	CW	Marb	RE	Fat
+ 14	-1.2	+ 45	+ 69	-0.30	+ 31	+ 41	+ 0.48	+ 0.59	+ 0.006
Act. BW	Adj. WW	Adj. YW	Act. SC	ADG	Act. %IMF	Act. REA	Act. RibFat	Act. RmpFat	
70	580	977	36.00	0.00	4.00	13.80	0.20	0.28	

CALVING EASE EPDs enhanced by 50k genomic test. % Rank in breed: CED-5%, BW-10%, DMI-10%, \$W-15%, \$B-5%

Lot 53 **MLL Konza E576**
DOB: 02/27/17 **Bull** **19005283** **Tattoo: E576**

Sire: Connealy Confidence 0100
KSU Konza 3111
KSU Miss New Day 1173
L K 15 Merger

Dam: Mll Merger 7532
Meads Alecia North 378

\$W	+54.75
\$F	+62.85
\$G	+27.75
\$YG	+5.24
\$B	+143.23
\$EN	-15.87

CED	BW	WN	YR	SC	Milk	CW	Marb	RE	Fat
+ 7	+ 2.1	+ 59	+ 102	+ 0.20	+ 27	+ 51	+ 0.33	+ 0.55	-0.019
Act. BW	Adj. WW	Adj. YW	Act. SC	ADG	Act. %IMF	Act. REA	Act. RibFat	Act. RmpFat	
85	673	1,249	36.00	0.00	3.77	12.70	0.24	0.26	

MODERATE CALVING EASE EPDs enhanced by 50k genetic test. % rank in breed: WW-25%, YW-30%, RADG-25%, CEM-30%, \$F-25%, \$B-20%



MLL KONZA E576

Lot 54 **MLL Konza E573**
DOB: 02/24/17 **Bull** **18856568** **Tattoo: E573**

Sire: Connealy Confidence 0100
KSU Konza 3111
KSU Miss New Day 1173
LK12 Ton

Dam: MLL LK12 Ton 1628
Mll Montana 7541

\$W	+54.21
\$F	+50.89
\$G	+27.66
\$YG	+8.95
\$B	+123.63
\$EN	-5.93

CED	BW	WN	YR	SC	Milk	CW	Marb	RE	Fat
+ 8	+ 0.1	+ 51	+ 91	-0.08	+ 26	+ 40	+ 0.25	+ 0.67	-0.022
Act. BW	Adj. WW	Adj. YW	Act. SC	ADG	Act. %IMF	Act. REA	Act. RibFat	Act. RmpFat	
70	644	1,220	39.00	0.00	3.58	14.70	0.22	0.38	

MODERATE CALVING EASE EPDs enhanced by 50k genomic test. % rank in breed: BW-25%, RADG-25%, RE-20%, \$W-30%

Lot 56 **MLL Lookout E094**
DOB: 02/23/17 **Bull** **18953116** **Tattoo: E094**

Sire: J-C SS Objective 0852
PS Lookout 1253
J-C Beverly 0882
M C M 308/042 X 037

Dam: MLL 308 0578
MS MLL 584

\$W	+36.44
\$F	+23.58
\$G	+44.96
\$YG	+6.62
\$B	+107.08
\$EN	+5.16

CED	BW	WN	YR	SC	Milk	CW	Marb	RE	Fat
+ 12	+ 0.1	+ 40	+ 70	1 + 0.95	+ 21	1 + 25	1 + 0.76	1 + 0.37	1 - 0.008
Act. BW	Adj. WW	Adj. YW	Act. SC	ADG	Act. %IMF	Act. REA	Act. RibFat	Act. RmpFat	
70	646	1,054	37.00	0.00	4.35	12.00	0.19	0.24	

CALVING EASE EPDs enhanced by 50k genomic test. % Rank in breed: CED-20%, BW-30%, DMI-25%, CEM-20%, \$EN-15%, Mar-25%, \$g-15%, \$YG-20%



MLL 5572 E106

Lot **57** **MLL 5572 E106**
 DOB: 02/25/17 Bull 19048466 Tattoo: E106

Sire: J-C Future Direction 1110
 MLL Future Direction 5572
 MLL 149u 2525
 LK 07 Fame
 Dam: MLL Fame 0546
 Mll 1407 New Design 7508

\$W	+55.29
\$F	+60.31
\$G	+48.64
YG	+3.24
\$B	+116.97
\$EN	-14.44

CED	BW	WN	YR	SC	Milk	CW	Marb	RE	Fat
+5	+1.6	+53	+93	+0.03	+30	+23	+1.05	+0.32	+0.021
Act. BW	Adj. WW	Adj. YW	Act. SC	ADG	Act. %IMF	Act. REA	Act. RibFat	Act. RmpFat	
78	611	1,192	36.00	0.00	4.19	17.00	0.30	0.43	

EPDs enhanced by 50k genomic test. % Rank in breed: DMI10%, Doc-10%, CEM-20%, Mar-10%,\$W-30%, \$G-10%
 *This bull scanned the biggest rib eye in the yearling group.

Lot **58** **MLL Capitalist E006**
 DOB: 01/20/17 Bull 18856473 Tattoo: E006

Sire: S A V Final Answer 0035
 Connealy Capitalist 028
 Prides Pita of Conanga 8821
 L K 15 Merger
 Dam: MLL Merger 6513
 Freda Lovana

\$W	+40.20
\$F	+29.64
\$G	+25.41
YG	+3.82
\$B	+96.23
\$EN	+5.91

CED	BW	WN	YR	SC	Milk	CW	Marb	RE	Fat
+3	+2.3	+45	+73	-0.10	+21	+27	+0.31	+0.47	+0.026
Act. BW	Adj. WW	Adj. YW	Act. SC	ADG	Act. %IMF	Act. REA	Act. RibFat	Act. RmpFat	
75	611	1,054	36.00	0.00	3.78	13.10	0.17	0.27	

EPDs enhanced by 50k genomic test. % Rank in breed:DMI-10%, \$EN-20%

Lot **59** **MLL Future Design E135**
 DOB: 03/10/17 Bull 18953138 Tattoo: E135

Sire: RAB-EGL Future Design
 RAB-GAR Future Design 4518T
 RAB-GAR MS Load UP - 4870N
 J-C Total 0922
 Dam: MLL Total 1564
 Miss H M Power 257

\$W	+37.65
\$F	+28.49
\$G	+38.89
YG	+5.84
\$B	+120.33
\$EN	+1.46

CED	BW	WN	YR	SC	Milk	CW	Marb	RE	Fat
+8	+0.4	+39	+70	+1.08	+24	+32	+0.59	+0.39	-0.010
Act. BW	Adj. WW	Adj. YW	Act. SC	ADG	Act. %IMF	Act. REA	Act. RibFat	Act. RmpFat	
70	609	1,075	41.00	0.00	3.74	12.00	0.19	0.23	

CALVING EASE EPDs enhanced by 50k genomic test. % Rank in breed:BW-30%,\$E-30%, DMI-15%,\$G-30%,\$YG-20%

Lot **60** **MLL Absolute E039**
 DOB: 01/29/17 Bull 18980889 Tattoo: E039

Sire: S A V Final Answer 0035
 K C F Bennett Absolute
 Thomas Miss Lucy 5152
 Packard Focus 29
 Dam: MLL Focus 4637
 Mll Montana 7531

\$W	+56.64
\$F	+98.59
\$G	+24.15
YG	+8.01
\$B	+151.24
\$EN	-10.16

CED	BW	WN	YR	SC	Milk	CW	Marb	RE	Fat
+2	+2.8	+67	+123	+1.53	+21	+53	+0.20	+0.79	-0.021
Act. BW	Adj. WW	Adj. YW	Act. SC	ADG	Act. %IMF	Act. REA	Act. RibFat	Act. RmpFat	
70	655	1,199	39.00	0.00	2.98	14.00	0.20	0.26	

EPDs enhanced by genetic data. % Rank in breed:WW-10%,YW-5%, RADG-3%, SC-10%,DOC-30%, RE-10%,\$W-25%,\$F-3%,\$YG-20%,\$B-10%

Lot **61** **MLL All In E572**
 DOB: 02/24/17 Bull 18856562 Tattoo: E572

Sire: A A R Ten X 7008 S A
 Deer Valley All In
 Deer Valley Rita 0274
 LK 07 Fame
 Dam: MLL Fame 3545
 MLL 4518T 0540

\$W	+61.16
\$F	+87.01
\$G	+32.73
YG	+2.94
\$B	+143.49
\$EN	-11.47

CED	BW	WN	YR	SC	Milk	CW	Marb	RE	Fat
+5	+2.9	+68	+119	+1.64	+23	+46	+0.50	+0.43	-0.003
Act. BW	Adj. WW	Adj. YW	Act. SC	ADG	Act. %IMF	Act. REA	Act. RibFat	Act. RmpFat	
85	649	1,132	39.00	0.00	4.11	11.30	0.20	0.31	

EPDs enhanced by genetic data. % rank in breed: WW-10%,YW-10%,RADG-15%,Sc-10%,CEM-15%,\$W-15%,\$F-10%,\$B-15%

Lot **62** **MLL Konza E561**
 DOB: 02/19/17 Bull 18856571 Tattoo: E561

Sire: Connealy Confidence 0100
 KSU Konza 3111
 KSU Miss New Day 1173
 RAB 1023 Precision 203u
 Dam: MLL 9545 1588
 MLL Final Answer 9545

\$W	+69.65
\$F	+60.60
\$G	+36.67
YG	+4.38
\$B	+147.56
\$EN	-10.92

CED	BW	WN	YR	SC	Milk	CW	Marb	RE	Fat
+10	+1.9	+68	+109	+0.48	+25	+53	+0.57	+0.59	-0.009
Act. BW	Adj. WW	Adj. YW	Act. SC	ADG	Act. %IMF	Act. REA	Act. RibFat	Act. RmpFat	
80	595	1,113	39.00	0.00	3.73	12.10	0.15	0.24	

CALVING EASE EPDs enhanced by 50K genomic test. % rank in breed: CED-20%,WW-10%, YW-20%, CEM-3%,\$W-10%,\$F-30%,\$B-15%

Lot **63** **MLL Future Design E033**
 DOB: 02/01/17 Bull 18953098 Tattoo: E033

Sire: RAB-EGL Future Design
 RAB-GAR Future Design 4518T
 RAB-GAR MS Load UP - 4870N
 J-C Future Direction 0952
 Dam: MLL 0952 1603
 J-C Faye 0941

\$W	+50.37
\$F	+45.40
\$G	+35.60
YG	+8.63
\$B	+126.79
\$EN	-19.11

CED	BW	WN	YR	SC	Milk	CW	Marb	RE	Fat
+10	+0.2	+47	+78	+0.36	+33	+32	+0.43	+0.43	-0.034
Act. BW	Adj. WW	Adj. YW	Act. SC	ADG	Act. %IMF	Act. REA	Act. RibFat	Act. RmpFat	
70	592	1,144	36.00	0.00	3.69	13.40	0.19	0.22	

CALVING EASE EPDs enhanced by 50k genomic test. % Rank in breed: CED-10%,BW-25%, RADG-15%, DMI-3%, CEM-3%, \$YG-15%



MLL COMBINATION E042

Lot **64** **MLL Combination E042**
 DOB: 02/06/17 Bull 18856468 Tattoo: E042

Sire: Connealy Consensus
 Connealy Combination 0188
 Black Cayra of Conanga 8127
 Packard Focus 29
 Dam: MLL PF29 1579
 MLL 6005 New Design 9501

\$W	+45.88
\$F	+61.76
\$G	+37.80
\$YG	-0.24
\$B	+135.92
\$EN	+6.97

CED	BW	WN	YR	SC	Milk	CW	Marb	RE	Fat
+3	+1.3	+52	+92	+0.27	+17	+36	+0.75	+0.22	+0.016
Act. BW	Adj. WW	Adj. YW	Act. SC	ADG	Act. %IMF	Act. REA	Act. RibFat	Act. RmpFat	
75	596	1,154	36.00	0.00	4.29	13.00	0.27	0.39	

EPDs enhanced by 50k genomic test. % Rank in breed: DMI-10%, YH-20%, \$EN-15%, MAR-25%, \$F-30%, \$B-25%

Mc Kenzie Land & Livestock

Lot **66** **MLL 4011Z E095**
 DOB: 02/25/17 Bull 18844030 Tattoo: E095

Sire: Summitcrest Complete 1P55
 RAB Body Builder 4011Z
 RAB MS Objective 4245W
 B/R Future Direction 6171
 Dam: J-C Cathy 0926
 J-C Cathy 0371

\$W	+42.32
\$F	+38.03
\$G	+35.93
\$YG	+7.72
\$B	+101.49
\$EN	+1.37

CED	BW	WN	YR	SC	Milk	CW	Marb	RE	Fat
+10	-1.1	+45	+78	+0.19	+21	+24	+0.46	+0.55	+0.004
Act. BW	Adj. WW	Adj. YW	Act. SC	ADG	Act. %IMF	Act. REA	Act. RibFat	Act. RmpFat	
70	577	1,027	36.00	0.00	3.34	13.90	0.20	0.36	

CALVING EASE EPDs enhanced by 50k genomic test. % Rank in breed: CED-10%, BW-10%, DMI-20%, CEM-3%, \$EN-30%

Mc Kenzie Land & Livestock

Lot **67** **MLL Leverage E051**
 DOB: 02/04/17 Bull 18953101 Tattoo: E051

Sire: Gardens Leverage
 Gardens Leverage Q074
 Green Garden Rita F077
 RAB-GAR Future Design 4518T
 Dam: MLL 4518T 4707
 J-C Faye 1039

\$W	+44.13
\$F	+27.94
\$G	+43.36
\$YG	+1.77
\$B	+112.10
\$EN	-3.51

CED	BW	WN	YR	SC	Milk	CW	Marb	RE	Fat
+7	+1.7	+42	+78	+0.93	+28	+31	+0.88	+0.43	+0.032
Act. BW	Adj. WW	Adj. YW	Act. SC	ADG	Act. %IMF	Act. REA	Act. RibFat	Act. RmpFat	
75	616	1,126	39.00	0.00	4.25	13.20	0.21	0.33	

MODERATE CALVING EASE EPDs enhanced by 50k genomic test. % Rank in breed: \$EN-25%, MAR-15%, \$G-15%

Mc Kenzie Land & Livestock



MLL PAYWEIGHT E025

Lot **65** **MLL Payweight E025**
 DOB: 01/24/17 Bull 18981032 Tattoo: E025

Sire: Basin Payweight 006S
 Basin Payweight 1682
 21AR O Lass 7017
 P S E23
 Dam: MLL E23 4586
 MLL 821 1576

\$W	+60.38
\$F	+55.76
\$G	+44.39
\$YG	+5.55
\$B	+135.21
\$EN	+3.81

CED	BW	WN	YR	SC	Milk	CW	Marb	RE	Fat
+1	+1.7	+61	+99	+0.18	+19	+38	+0.78	+0.59	+0.006
Act. BW	Adj. WW	Adj. YW	Act. SC	ADG	Act. %IMF	Act. REA	Act. RibFat	Act. RmpFat	
70	737	1,145	34.00	0.00	4.58	14.50	0.19	0.38	

EPDs enhanced by 50k genomic test. % Rank in breed: \$EN-20%, MAR-20%, \$G-15%, \$B-25%

Mc Kenzie Land & Livestock



MLL CAPITALIST E012

Lot **68** **MLL Capitalist E012**
 DOB: 01/21/17 Bull 18856472 Tattoo: E012

Sire: S A V Final Answer 0035
 Connealy Capitalist 028
 Prides Pita of Conanga 8821
 SPA Bluegrass 800
 Dam: MLL 800 2528
 Mll Merger 7532

\$W	+40.11
\$F	+24.92
\$G	+27.11
\$YG	+8.87
\$B	+65.12
\$EN	+12.45

CED	BW	WN	YR	SC	Milk	CW	Marb	RE	Fat
+9	-0.1	+48	+76	-0.03	+14	+15	+0.24	+0.53	+0.006
Act. BW	Adj. WW	Adj. YW	Act. SC	ADG	Act. %IMF	Act. REA	Act. RibFat	Act. RmpFat	
70	557	1,035	35.00	0.00	3.69	12.70	0.18	0.32	

CALVING EASE EPDs enhanced by 50k genomic test. % Rank in breed: CED-25%, BW-20%, MH-30%, \$EN-10%, \$YG-15%

Mc Kenzie Land & Livestock

Lot 69 **MLL Capitalist E516**
 DOB: 01/13/17 Bull 18985841 Tattoo: E516

Sire: S A V Final Answer 0035
 Connealy Capitalist 028
 Prides Pita of Conanga 8821
 RRR 1540 5050 2048 846 552

Dam: MLL 1540 5605
 MLL Bar Obj 0601

\$W	+78.49
\$F	+76.19
\$G	+43.97
\$YG	+2.38
\$B	+144.38
\$EN	-12.93

CED	BW	WN	YR	SC	Milk	CW	Marb	RE	Fat
+7	+1.3	+74	+121	+0.03	+25	+46	+0.88	+0.58	+0.019
Act. BW	Adj. WW	Adj. YW	Act. SC	ADG	Act. %IMF	Act. REA	Act. RibFat	Act. RmpFat	
78	600	1,118	36.00	0.00	4.16	13.30	0.17	0.29	

CALVING EASE EPDs enhanced by 50K genomic data. % rank in breed:
 WW-2%, YW-2%, Sc-3%, Mar-15%, \$W-2%, \$F-15%, \$G-20%, \$B-15%

Lot 73 **MLL Konza E581**
 DOB: 03/02/17 Bull 19002810 Tattoo: E581

Sire: Connealy Confidence 0100
 KSU Konza 3111
 KSU Miss New Day 1173
 H A R B Freedom 1156-288

Dam: MLL Freedom 1574
 MS MLL 449

\$W	+65.97
\$F	+48.60
\$G	+29.40
\$YG	+1.63
\$B	+127.88
\$EN	-5.59

CED	BW	WN	YR	SC	Milk	CW	Marb	RE	Fat
+9	+0.3	+60	+104	+0.38	+25	+51	+0.45	+0.57	+0.016
Act. BW	Adj. WW	Adj. YW	Act. SC	ADG	Act. %IMF	Act. REA	Act. RibFat	Act. RmpFat	
70	592	1,093	37.00	0.00	3.47	13.80	0.16	0.31	

CALVING EASE EPDs enhanced by 50k genomic test. % rank in breed:
 CED-25%, BW-25%, WW-20%, YW-25%, Doc-10%, CEM-15%, \$W-10%

Lot 70 **MLL Payweight E511**
 DOB: 01/11/17 Bull 18989609 Tattoo: E511

Sire: Basin Payweight 006S
 Basin Payweight 1682
 21AR O Lass 7017
 PS Lookout 1253

Dam: MLL Lookout 5609
 MLL 149u 2581

\$W	+64.47
\$F	+49.22
\$G	+43.00
\$YG	+3.05
\$B	+98.98
\$EN	-2.28

CED	BW	WN	YR	SC	Milk	CW	Marb	RE	Fat
+10	-0.2	+52	+92	+1.23	+28	+22	+0.82	+0.32	+0.024
Act. BW	Adj. WW	Adj. YW	Act. SC	ADG	Act. %IMF	Act. REA	Act. RibFat	Act. RmpFat	
71	580	1,121	41.00	0.00	3.89	13.80	0.21	0.30	

CALVING EASE EPDs enhanced by 50k genomic test. % Rank in breed:
 CED-20%, BW-20%, Sc-20%, CEM-15%, Mar-20%, \$W-10%



Lot 71 **MLL Absolute E018**
 DOB: 01/22/17 Bull 18989451 Tattoo: E018

Sire: S A V Final Answer 0035
 K C F Bennett Absolute
 Thomas Miss Lucy 5152
 RAB-GAR Future Design 4518T

Dam: MLL Future Design 4536
 MLL New Design 8554

\$W	+27.12
\$F	+40.58
\$G	+41.82
\$YG	+8.43
\$B	+96.92
\$EN	+15.16

CED	BW	WN	YR	SC	Milk	CW	Marb	RE	Fat
+6	+0.3	+43	+76	-0.50	+11	+17	+0.60	+0.45	-0.003
Act. BW	Adj. WW	Adj. YW	Act. SC	ADG	Act. %IMF	Act. REA	Act. RibFat	Act. RmpFat	
75	618	1,072	34.00	0.00	3.53	13.50	0.24	0.33	

MODERATE CALVING EASE EPDs enhanced by 50k genomic test. % Rank in breed:
 BW-25%, DMI-5%, \$EN-5%, \$G-25%, \$YG-15%

Lot 74 **MLL Total E027**
 DOB: 02/03/17 Bull 18953096 Tattoo: E027

Sire: TC Total 410
 J-C Total 0922
 J-C Faye 0257
 Packard Focus 29

Dam: MLL 29 3627
 MS MLL Montana 6540

\$W	+44.96
\$F	+24.66
\$G	+44.00
\$YG	+6.54
\$B	+94.61
\$EN	-8.09

CED	BW	WN	YR	SC	Milk	CW	Marb	RE	Fat
+2	+0.8	+40	+67	+1.18	+31	+17	+0.73	+0.18	-0.016
Act. BW	Adj. WW	Adj. YW	Act. SC	ADG	Act. %IMF	Act. REA	Act. RibFat	Act. RmpFat	
70	678	1,121	37.00	0.00	3.32	13.30	0.18	0.20	

SELLS AS COMMERCIAL EPDs enhanced by 50k genomic test. % Rank in breed:
 BW-30%, DMI-10%, MAR-25%, \$G-15, \$YG-25%

Lot 72 **MLL Payweight E029**
 DOB: 01/22/17 Bull 18981033 Tattoo: E029

Sire: Basin Payweight 006S
 Basin Payweight 1682
 21AR O Lass 7017
 P S E23

Dam: MLL E23 4549
 J-C Cathy 0938

\$W	+56.42
\$F	+43.61
\$G	+42.07
\$YG	+1.87
\$B	+107.11
\$EN	-1.08

CED	BW	WN	YR	SC	Milk	CW	Marb	RE	Fat
+2	+0.8	+50	+87	+0.93	+26	+26	+0.83	+0.30	+0.025
Act. BW	Adj. WW	Adj. YW	Act. SC	ADG	Act. %IMF	Act. REA	Act. RibFat	Act. RmpFat	
75	689	1,052	36.00	0.00	4.43	13.00	0.36	0.45	

EPDs enhanced by genetic data. % Rank in breed: BW-30%, \$EN-30, MAR-15%, \$W-30%, \$G-20%

Lot 75 **MLL Total E084**
 DOB: 02/06/17 Bull 18953112 Tattoo: E084

Sire: TC Total 410
 J-C Total 0922
 J-C Faye 0257
 P S E23

Dam: MLL E23 3553
 Falcon Queen Susan 309N

\$W	+41.56
\$F	+39.82
\$G	+42.34
\$YG	+9.29
\$B	+97.42
\$EN	-2.12

CED	BW	WN	YR	SC	Milk	CW	Marb	RE	Fat
+3	+1.2	+46	+81	+0.75	+23	+20	+0.59	+0.54	-0.006
Act. BW	Adj. WW	Adj. YW	Act. SC	ADG	Act. %IMF	Act. REA	Act. RibFat	Act. RmpFat	
75	633	1,078	39.00	0.00	3.44	13.30	0.27	0.32	

EPDs enhanced by 50k genomic test. % Rank in breed: DMI-20%

Lot 76 **MLL Total E049**
 DOB: 02/06/17 Bull 18844012 Tattoo: E049

Sire: TC Total 410
 J-C Total 0922
 J-C Faye 0257
 SPA Bluegrass 800

Dam: MLL 800 3621
 J-C Joy 0935

\$W	+35.10
\$F	+12.51
\$G	+52.40
\$YG	+12.98
\$B	+86.44
\$EN	+4.79

CED	BW	WN	YR	SC	Milk	CW	Marb	RE	Fat
+4	-0.3	+39	+61	-0.26	+21	+11	+0.80	+0.62	-0.022
Act. BW	Adj. WW	Adj. YW	Act. SC	ADG	Act. %IMF	Act. REA	Act. RibFat	Act. RmpFat	
70	578	1,050	36.00	0.00	4.19	13.90	0.18	0.28	

EPDs enhanced by 50k genomic test. % Rank in breed: BW-20%, DMI-15%, \$EN-20%, MAR-20%, RE-30%, \$G-4%, \$YG-1%



Lot 77 **MLL Discovery E016**
 DOB: 01/25/17 Bull 18981173 Tattoo: E016

Sire: A A R Ten X 7008 S A
 V A R Discovery 2240
 Deer Valley Rita 0308
 B3R Tender Ten R065

Dam: MLL Tender Ten 3502
 MLL 149u 1605

\$W	+64.74
\$F	+82.54
\$G	+51.93
\$YG	+7.58
\$B	+144.80
\$EN	-23.97

CED	BW	WN	YR	SC	Milk	CW	Marb	RE	Fat
+9	+1.4	+62	+116	+0.53	+32	+38	+1.00	+0.55	-0.019
Act. BW	Adj. WW	Adj. YW	Act. SC	ADG	Act. %IMF	Act. REA	Act. RibFat	Act. RmpFat	
75	632	1,088	38.00	0.00	3.92	13.60	0.27	0.31	

CALVING EASE EPDs enhanced by 50k genomic test. % Rank in breed: CED-25%, WW-10%, YW-10%, RADG-15%, DOC-20%, CEM-15%, MAR-10%, \$W-10%, \$F-5%, \$G-5%, \$B-10%

Lot 78 **MLL 29 E021**
 DOB: 01/30/17 Bull 18844004 Tattoo: E021

Sire: Packard In Focus 137
 Packard Focus 29
 Packard Firefly 36
 J-C Total 0922

Dam: MLL 0922 2613
 MLL 6005 New Design 9551

\$W	+53.57
\$F	+49.06
\$G	+49.29
\$YG	+10.95
\$B	+115.61
\$EN	-6.25

CED	BW	WN	YR	SC	Milk	CW	Marb	RE	Fat
+6	+1.6	+51	+83	+0.53	+27	+21	+0.76	+0.43	-0.040
Act. BW	Adj. WW	Adj. YW	Act. SC	ADG	Act. %IMF	Act. REA	Act. RibFat	Act. RmpFat	
564	1,058	37.00	0.00	4.39	11.80	0.19	0.23		

MODERATE CALVING EASE EPDs enhanced by 50k genomic test. % Rank in breed: RADG-15%, DMI-4%, MAR-25%, \$W-30%, \$G-10%, \$YG-4%

Lot 79 **MLL Combination E517**
 DOB: 01/14/17 Bull 18985834 Tattoo: E517

Sire: Connealy Consensus
 Connealy Combination 0188
 Black Cayra of Conanga 8127
 RAB New Standard 123Z

Dam: MLL 123Z 5604
 MLL 821 1576

\$W	+62.07
\$F	+80.36
\$G	+39.44
\$YG	+3.67
\$B	+171.01
\$EN	-18.01

CED	BW	WN	YR	SC	Milk	CW	Marb	RE	Fat
+2	+1.1	+59	+107	+0.59	+30	+55	+0.67	+0.73	+0.010
Act. BW	Adj. WW	Adj. YW	Act. SC	ADG	Act. %IMF	Act. REA	Act. RibFat	Act. RmpFat	
75	575	1,162	37.00	0.00	3.77	13.30	0.18	0.28	

EPDs enhanced by genetic 50k genomic test. % rank in breed: WW-25%, YW-20%, RADG-10%, DMI-15%, Mar-30%, RE-15%, \$W-15%, \$F-10%, \$G-25%, \$B-3%



Lot 80 **MLL Combination E020**
 DOB: 01/22/17 Bull 18980914 Tattoo: E020

Sire: Connealy Consensus
 Connealy Combination 0188
 Black Cayra of Conanga 8127
 SPA Bluegrass 800

Dam: MLL 800 2593
 Meads Eston Erica 143

\$W	+29.80
\$F	+35.19
\$G	+34.34
\$YG	+6.57
\$B	+103.83
\$EN	+21.13

CED	BW	WN	YR	SC	Milk	CW	Marb	RE	Fat
+3	+0.3	+44	+73	+0.94	+9	+24	+0.45	+0.36	-0.007
Act. BW	Adj. WW	Adj. YW	Act. SC	ADG	Act. %IMF	Act. REA	Act. RibFat	Act. RmpFat	
70	542	1,049	41.00	0.00	3.87	13.60	0.19	0.27	

EPDs enhanced by 50k genomic test. % Rank in breed: RADG-30%, DMI-4%, SEN-2%

Lot 81 **MLL Future Direction E101**
 DOB: 02/22/17 Bull 18844035 Tattoo: E101

Sire: B/R Future Direction 6171
 J-C Future Direction 1110
 J-C Faye 0837
 P S E23

Dam: MLL E23 2534
 MLL Merger 6513

\$W	+40.81
\$F	+51.64
\$G	+38.87
\$YG	+7.62
\$B	+122.95
\$EN	-3.73

CED	BW	WN	YR	SC	Milk	CW	Marb	RE	Fat
+2	+2.5	+49	+82	-0.98	+23	+28	+0.54	+0.35	-0.026
Act. BW	Adj. WW	Adj. YW	Act. SC	ADG	Act. %IMF	Act. REA	Act. RibFat	Act. RmpFat	
75	581	1,099	39.00	0.00	4.15	13.80	0.21	0.31	

EPDs enhanced by 50k genomic test. % Rank in breed: RADG-15%, DMI-2%

Lot 82 **MLL 505 E538**
 DOB: 02/05/17 Bull 18834676 Tattoo: E538

Sire: EF Complement 8088
 Lust Complement 505
 Hinksons Beauty 13 300
 RRR 1540 5050 2048 846 552

Dam: MLL 1540 5581
 MLL in Focus 1505

\$W	+54.04
\$F	+73.62
\$G	+31.71
\$YG	+0.46
\$B	+136.43
\$EN	-2.81

CED	BW	WN	YR	SC	Milk	CW	Marb	RE	Fat
+4	+3.2	+66	+111	+0.65	+18	+44	+0.54	+0.53	+0.032
Act. BW	Adj. WW	Adj. YW	Act. SC	ADG	Act. %IMF	Act. REA	Act. RibFat	Act. RmpFat	
85	626	1,138	35.00	0.00	3.79	15.20	0.21	0.28	

EPDs enhanced by 50k genomic test. % rank in breed:
 WW-10%, YW-15%, \$W-30%, \$F-15%, \$B-25%

Lot 86 **MLL Capitalist E001**
 DOB: 01/22/17 Bull 18980924 Tattoo: E001

Sire: S A V Final Answer 0035
 Connealy Capitalist 028
 Prides Pita of Conanga 8821
 J-C Total 0922

Dam: MLL Total 3576
 MLL 0484 1592

\$W	+45.92
\$F	+20.37
\$G	+30.85
\$YG	+3.08
\$B	+81.99
\$EN	+8.65

CED	BW	WN	YR	SC	Milk	CW	Marb	RE	Fat
+12	-2.4	+43	+75	+0.09	+20	+24	+0.45	+0.47	+0.037
Act. BW	Adj. WW	Adj. YW	Act. SC	ADG	Act. %IMF	Act. REA	Act. RibFat	Act. RmpFat	
65	590	1,001	35.00	0.00	3.87	13.10	0.15	0.29	

CALVING EASE DELUXE EPDs enhanced by 50k genomic test. % Rank in breed: CED-15%, BW-3%, CEM-15%, \$E-15%

Lot 83 **MLL Payweight E044**
 DOB: 02/01/17 Bull 19051567 Tattoo: E044

Sire: Basin Payweight 006S
 Basin Payweight 1682
 21AR O Lass 7017
 RAB-GAR Future Design 4518T

Dam: MLL 4518T 0540
 Falcon Primrose 1292

\$W	+71.91
\$F	+56.95
\$G	+26.54
\$YG	-11.25
\$B	+122.78
\$EN	-11.16

CED	BW	WN	YR	SC	Milk	CW	Marb	RE	Fat
+3	+1.8	+62	+104	+1.12	+30	+44	+0.74	+0.05	+0.057
Act. BW	Adj. WW	Adj. YW	Act. SC	ADG	Act. %IMF	Act. REA	Act. RibFat	Act. RmpFat	
75	597	983	36.00	0.00	3.88	10.90	0.21	0.28	

EPDs enhanced by 50k genomic test. % Rank in breed: WW-15%, YW-25%, Mar-25%, \$W-4%

Lot 87 **MLL Capitalist E510**
 DOB: 01/10/17 Bull 19037724 Tattoo: E510

Sire: S A V Final Answer 0035
 Connealy Capitalist 028
 Prides Pita of Conanga 8821
 RRR 1540 5050 2048 846 552

Dam: MLL 1540 5579
 MLL 149u 1524

\$W	+56.27
\$F	+30.56
\$G	+35.87
\$YG	+5.34
\$B	+102.04
\$EN	-1.07

CED	BW	WN	YR	SC	Milk	CW	Marb	RE	Fat
+13	-0.2	+46	+86	+0.29	+28	+33	+0.52	+0.74	+0.033
Act. BW	Adj. WW	Adj. YW	Act. SC	ADG	Act. %IMF	Act. REA	Act. RibFat	Act. RmpFat	
75	519	1,071	35.00	0.00	3.32	14.80	0.11	0.25	

CALVING EASE EPDs enhanced by 50k genomic test. % Rank in breed: CED-5%, BW-20%, CEM-20%, RE-15%, \$W-25%

Lot 84 **MLL Lookout E110**
 DOB: 02/28/17 Bull 18953120 Tattoo: E110

Sire: J-C SS Objective 0852
 PS Lookout 1253
 J-C Beverly 0882
 B/R Future Direction 6171

Dam: J-C Joy's Direction 1030
 J-C Joy 0563

\$W	+32.15
\$F	+18.95
\$G	+45.01
\$YG	+7.80
\$B	+121.42
\$EN	+5.28

CED	BW	WN	YR	SC	Milk	CW	Marb	RE	Fat
+10	+0.9	+38	+68	+1.87	+21	+33	+0.72	+0.57	+0.010
Act. BW	Adj. WW	Adj. YW	Act. SC	ADG	Act. %IMF	Act. REA	Act. RibFat	Act. RmpFat	
70	577	1,065	42.00	0.00	3.92	13.20	0.22	0.32	

CALVING EASE EPDs enhanced by 50k genomic test. % Rank in breed: SC-20%, CEM-15%, \$EN-30%, Mar-25%, \$G-15%, \$G-15%, \$YG-15%

Lot 88 **MLL Total E134**
 DOB: 02/20/17 Bull 18953137 Tattoo: E134

Sire: TC Total 410
 J-C Total 0922
 J-C Faye 0257
 ALC Big Eye D09N

Dam: MLL Big Eye 3510
 MLL 4518T 1552

\$W	+41.13
\$F	+10.99
\$G	+44.71
\$YG	+11.32
\$B	+85.78
\$EN	+1.63

CED	BW	WN	YR	SC	Milk	CW	Marb	RE	Fat
+9	+0.2	+38	+62	+1.05	+26	+16	+0.60	+0.61	+0.013
Act. BW	Adj. WW	Adj. YW	Act. SC	ADG	Act. %IMF	Act. REA	Act. RibFat	Act. RmpFat	
75	592	970	35.00	0.00	3.21	13.20	0.10	0.22	

CALVING EASE EPDs enhanced by 50k genomic test. % Rank in breed: CED-25%, BW-20%, DMI-20%, CEM-30%, \$EN-30%, RE-30%, \$G-15%, \$YG-10%

Lot 85 **MLL Combination E003**
 DOB: 01/22/17 Bull 18856469 Tattoo: E003

Sire: Connealy Consensus
 Connealy Combination 0188
 Black Cayra of Conanga 8127
 SPA Bluegrass 800

Dam: MLL 800 1575
 Meads Miss Erica

\$W	+35.27
\$F	+38.26
\$G	+34.17
\$YG	+1.88
\$B	+104.85
\$EN	+16.72

CED	BW	WN	YR	SC	Milk	CW	Marb	RE	Fat
+7	-0.3	+39	+68	-0.33	+16	+21	+0.57	+0.07	+0.007
Act. BW	Adj. WW	Adj. YW	Act. SC	ADG	Act. %IMF	Act. REA	Act. RibFat	Act. RmpFat	
65	523	984	36.00	0.00	3.77	10.70	0.17	0.24	

MODERATE CALVING EASE EPDs enhanced by 50k genomic test. % Rank in breed: BW-20%, RADG-20%, DMI-1%, \$E-4%

Lot 89 **MLL Leverage E149**
 DOB: 03/16/17 Bull 18979009 Tattoo: E149

Sire: Gardens Leverage
 Gardens Leverage Q074
 Green Garden Rita F077
 J-C Total 0922

Dam: MLL Total 4601
 MLL 9545 1588

\$W	+46.82
\$F	+34.50
\$G	+43.85
\$YG	+4.43
\$B	+127.45
\$EN	-1.92

CED	BW	WN	YR	SC	Milk	CW	Marb	RE	Fat
+3	+1.9	+46	+81	+0.94	+26	+36	+0.80	+0.63	+0.024
Act. BW	Adj. WW	Adj. YW	Act. SC	ADG	Act. %IMF	Act. REA	Act. RibFat	Act. RmpFat	
75	625	1,135	40.00	0.00	3.86	15.60	0.24	0.36	

EPDs enhanced by 50k genomic test. % Rank in breed: Mar-20%, RE-25%, \$G-20%

Lot 90 **MLL E23 E076**
DOB: 02/15/17 **Bull** **18844024** **Tattoo: E076**

Sire: Connealy Whitman
P S E23
P S Miss 758

Dam: J-C Future Direction 0952
MLL Future Direction 2580
J-C Faye 0941

\$W	+35.41
\$F	+16.46
\$G	+49.33
\$YG	+7.74
\$B	+100.88
\$EN	-0.13

CED	BW	WN	YR	SC	Milk	CW	Marb	RE	Fat
+1	+0.7	+36	+65	+0.94	+26	+21	+0.88	+0.49	+0.002
Act. BW	Adj. WW	Adj. YW	Act. SC	ADG	Act. %IMF	Act. REA	Act. RibFat	Act. RmpFat	
75	578	1,039	37.00	0.00	4.19	14.60	0.28	0.28	

EPDs enhanced by 50k genomic test. % Rank in breed: MAR-15%, \$G-10%, \$YG-20%

Lot 93 **MLL All In E577**
DOB: 02/27/17 **Bull** **19049169** **Tattoo: E577**

Sire: A A R Ten X 7008 S A
Deer Valley All In
Deer Valley Rita 0274
LK 07 Fame

Dam: MLL Fame 3529
MLL Predestined 9515

\$W	+59.95
\$F	+88.16
\$G	+42.14
\$YG	+8.04
\$B	+153.14
\$EN	-23.37

CED	BW	WN	YR	SC	Milk	CW	Marb	RE	Fat
+3	+3.5	+63	+121	+0.67	+32	+49	+0.62	+0.59	-0.039
Act. BW	Adj. WW	Adj. YW	Act. SC	ADG	Act. %IMF	Act. REA	Act. RibFat	Act. RmpFat	
70	641	1,095	38.00	0.00	3.82	13.10	0.20	0.30	

EPDs enhanced by 50k genomic test. % Rank in breed: WW-15%, YW-5%, RADG-10%, CM-15%, \$W-20%, \$F-5%, \$G-20%, \$YG-20%, \$B-10%

Lot 91 **MLL 2520 E607**
DOB: 04/05/17 **Bull** **18982682** **Tattoo: E607**

Sire: Gardens Wave
MLL Wave 2520
MII Montana 7531

Dam: ALC Big Eye D09N
MLL Big Eye 3511
MLL 0484 1533

\$W	+35.79
\$F	+38.36
\$G	+36.35
\$YG	+3.70
\$B	+133.35
\$EN	+7.91

CED	BW	WN	YR	SC	Milk	CW	Marb	RE	Fat
+1	+3.9	+55	+78	+0.85	+14	+36	+0.58	+0.55	+0.021
Act. BW	Adj. WW	Adj. YW	Act. SC	ADG	Act. %IMF	Act. REA	Act. RibFat	Act. RmpFat	
75	693	970	38.00	0.00	3.74	13.00	0.20	0.23	

EPDs enhanced by 50k genomic test. % Rank in breed: DMI-3%, \$EN-15%, \$B-25%

Lot 94 **MLL 5572 E108**
DOB: 02/26/17 **Bull** **18953119** **Tattoo: E108**

Sire: J-C Future Direction 1110
MLL Future Direction 5572
MLL 149u 2525

Dam: RAB-GAR Objective 149u
MLL 149u 1641
MLL 6005 New Design 9542

\$W	+44.35
\$F	+33.90
\$G	+48.43
\$YG	+8.23
\$B	+114.86
\$EN	-7.94

CED	BW	WN	YR	SC	Milk	CW	Marb	RE	Fat
+12	+1.0	+44	+80	+0.29	+28	+28	+0.83	+0.55	-0.008
Act. BW	Adj. WW	Adj. YW	Act. SC	ADG	Act. %IMF	Act. REA	Act. RibFat	Act. RmpFat	
75	583	1,026	35.00	0.00	3.86	12.20	0.22	0.31	

CALVING EASE EPDs enhanced by 50k genomic test. % Rank in breed: CED-5%, CEM-15%, Mar-15%, RE-25%, \$W-30%, \$G-10%, \$YG-10%, \$B-35%

Lot 92 **MLL Lookout E136**
DOB: 03/10/17 **Bull** **19045113** **Tattoo: E136**

Sire: J-C SS Objective 0852
PS Lookout 1253
J-C Beverly 0882

Dam: Blevins Fortune Design 9836
MLL Fortune 1623
MLL New Design 6005 8549

\$W	+36.73
\$F	+22.62
\$G	+32.53
\$YG	+3.12
\$B	+88.20
\$EN	+2.78

CED	BW	WN	YR	SC	Milk	CW	Marb	RE	Fat
+7	+1.9	+41	+77	+1.07	+23	+27	+0.49	+0.31	+0.014
Act. BW	Adj. WW	Adj. YW	Act. SC	ADG	Act. %IMF	Act. REA	Act. RibFat	Act. RmpFat	
78	588	1,065	37.00	0.00	3.16	12.10	0.19	0.26	

EPDs enhanced by 50k genomic test. Easy keeping gentle bull. %Rank in breed: \$EN-25%, Doc-20%

Lot 95 **MLL Leverage E083**
DOB: 02/05/17 **Bull** **18953111** **Tattoo: E083**

Sire: Gardens Leverage
Gardens Leverage Q074
Green Garden Rita F077

Dam: J-C Future Direction 1110
MLL Future Direction 4523
MLL 821 2561

\$W	+35.29
\$F	+27.34
\$G	+48.99
\$YG	+6.46
\$B	+99.72
\$EN	-1.91

CED	BW	WN	YR	SC	Milk	CW	Marb	RE	Fat
+6	+1.1	+36	+73	-0.44	+27	+21	+0.92	+0.40	+0.004
Act. BW	Adj. WW	Adj. YW	Act. SC	ADG	Act. %IMF	Act. REA	Act. RibFat	Act. RmpFat	
75	559	981	34.00	0.00	3.75	12.20	0.16	0.25	

MODERATE CALVING EPDs enhanced by 50k genomic test. % Rank in breed: CEM-20%, MAR-10%, \$G-10%

Lot 96 **MLL Capitalist E520**
DOB: 01/17/17 **Bull** **18985840** **Tattoo: E520**

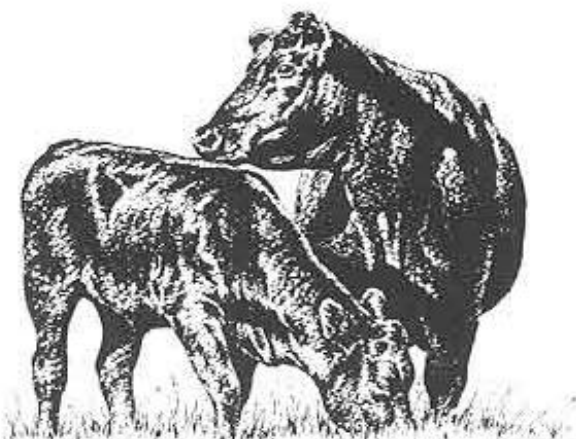
Sire: S A V Final Answer 0035
Connealy Capitalist 028
Prides Pita of Conanga 8821
RRR 1540 5050 2048 846 552

Dam: MLL 1540 5582
MLL LK12 Ton 1629

\$W	+56.60
\$F	+59.35
\$G	+30.23
\$YG	-2.82
\$B	+106.97
\$EN	-7.31

CED	BW	WN	YR	SC	Milk	CW	Marb	RE	Fat
+3	+3.2	+63	+105	+1.70	+23	+33	+0.59	+0.46	+0.065
Act. BW	Adj. WW	Adj. YW	Act. SC	ADG	Act. %IMF	Act. REA	Act. RibFat	Act. RmpFat	
83	500	1,041	39.00	0.00	3.72	10.80	0.17	0.20	

EPDs enhanced by 50k genomic test. % rank in breed: WW-15%, YW-25%, \$W-25%, \$F-30%



Lot 97 **MLL Future Direction E057**
 DOB: 02/10/17 Bull 18844014 Tattoo: E057

Sire: B/R Future Direction 6171
 J-C Future Direction 1110
 J-C Faye 0837
 J-C Total 0922
 Dam: MLL 0922 2609
 J-C Joy 0983

\$W	+37.59
\$F	+26.72
\$G	+43.13
\$YG	+9.36
\$B	+101.69
\$EN	+2.22

CED	BW	WN	YR	SC	Milk	CW	Marb	RE	Fat
+7	+1.0	+42	+71	+0.68	+22	+22	+0.61	+0.48	-0.018
Act. BW	Adj. WW	Adj. YW	Act. SC	ADG	Act. %IMF	Act. REA	Act. RibFat	Act. RmpFat	
75	560	1,043	38.00	0.00	3.92	12.90	0.21	0.28	

EPDs enhanced by 50k genomic test. % Rank in breed: DMI-20%, \$EN-30%, \$G-20%

Lot 101 **MLL Total E143**
 DOB: 03/20/17 Bull 18976260 Tattoo: E143

Sire: TC Total 410
 J-C Total 0922
 J-C Faye 0257
 J-C Future Direction 1110
 Dam: MLL FD 1110 3577
 MLL 149u 1547

\$W	+46.46
\$F	+26.65
\$G	+51.23
\$YG	+12.06
\$B	+113.74
\$EN	-0.05

CED	BW	WN	YR	SC	Milk	CW	Marb	RE	Fat
+8	+0.4	+47	+76	+0.08	+23	+26	+0.79	+0.75	-0.022
Act. BW	Adj. WW	Adj. YW	Act. SC	ADG	Act. %IMF	Act. REA	Act. RibFat	Act. RmpFat	
70	625	1,081	35.00	0.00	3.86	14.70	0.18	0.19	

MODERATE CALVING EASE EPDs enhanced by geneic data. % Rank in breed: BW-30%,Mar-20%,RE-15%

Lot 98 **MLL 505 E529**
 DOB: 01/30/17 Bull 19037486 Tattoo: E529

Sire: EF Complement 8088
 Lust Complement 505
 Hinksons Beauty 13 300
 RAB-GAR Future Design 4518T
 Dam: MLL 4518T 5664
 J-C Cathy 0938

\$W	+59.34
\$F	+75.27
\$G	+24.32
\$YG	-6.66
\$B	+127.59
\$EN	-6.96

CED	BW	WN	YR	SC	Milk	CW	Marb	RE	Fat
+10	+0.7	+57	+106	+1.12	+25	+41	+0.53	+0.13	+0.043
Act. BW	Adj. WW	Adj. YW	Act. SC	ADG	Act. %IMF	Act. REA	Act. RibFat	Act. RmpFat	
90	577	1,049	36.00	0.00	3.94	11.40	0.16	0.22	

CALVING EASE EPDs enhanced by 50k genomic test. % Rank in breed: CED-20%, WW-30%, YW-20%, RADG-25%, DMI-30%, \$W-20%, \$F-15%

Lot 102 **MLL Future Design E105**
 DOB: 02/25/17 Bull 18953118 Tattoo: E105

Sire: RAB-EGL Future Design
 RAB-GAR Future Design 4518T
 RAB-GAR MS Load UP - 4870N
 J-C Total 0922
 Dam: MLL Total 1571
 MS MLL 509

\$W	+44.82
\$F	+41.48
\$G	+39.32
\$YG	+7.31
\$B	+136.50
\$EN	-4.49

CED	BW	WN	YR	SC	Milk	CW	Marb	RE	Fat
+6	+1.5	+47	+81	+0.67	+25	+39	+0.56	+0.69	-0.001
Act. BW	Adj. WW	Adj. YW	Act. SC	ADG	Act. %IMF	Act. REA	Act. RibFat	Act. RmpFat	
75	641	1,084	38.00	0.00	3.65	14.90	0.16	0.25	

MODERATE CALVING EASE EPDs enhanced by 50k genomic test. % Rank in breed: DMI-15%, RE-20%

Lot 99 **MLL E23 E070**
 DOB: 02/12/17 Bull 18844020 Tattoo: E070

Sire: Connealy Whitman
 P S E23
 P S Miss 758
 G A R 1407 New Design 6005
 Dam: MLL New Design 6005 8549
 MS MLL 409

\$W	+39.74
\$F	+38.99
\$G	+48.21
\$YG	+10.75
\$B	+118.74
\$EN	+1.64

CED	BW	WN	YR	SC	Milk	CW	Marb	RE	Fat
+1	+1.1	+38	+74	+0.57	+26	+25	+0.73	+0.63	-0.020
Act. BW	Adj. WW	Adj. YW	Act. SC	ADG	Act. %IMF	Act. REA	Act. RibFat	Act. RmpFat	
70	558	1,070	36.00	0.00	3.89	14.60	0.17	0.35	

EPDs enhanced by 50k genomic test. % Rank in breed: RADG-30%, DMI-10%, \$EN-30%, MAR-25%, RE-30%, \$G-10%, \$YG-10%

Lot 104 **MLL 505 E596**
 DOB: 03/28/17 Bull 18979010 Tattoo: E596

Sire: EF Complement 8088
 Lust Complement 505
 Hinksons Beauty 13 300
 V A R Reserve 1111
 Dam: MLL Reserve 5504
 MLL Final Product 3517

\$W	+69.70
\$F	+70.78
\$G	+21.92
\$YG	+8.43
\$B	+138.39
\$EN	-12.26

CED	BW	WN	YR	SC	Milk	CW	Marb	RE	Fat
+5	+2.6	+63	+109	+0.36	+30	+52	+0.15	+0.93	-0.007
Act. BW	Adj. WW	Adj. YW	Act. SC	ADG	Act. %IMF	Act. REA	Act. RibFat	Act. RmpFat	
85	650	940	36.00	0.00	3.03	13.30	0.14	0.20	

EPDs enhanced by 50k genomic test. % Rank in breed: WW-15%, YW-15%, RE-4%, \$W-5%, \$F-15%, \$YG-15%, \$B-20%

Lot 100 **MLL 505 E605**
 DOB: 04/03/17 Bull 18979011 Tattoo: E605

Sire: EF Complement 8088
 Lust Complement 505
 Hinksons Beauty 13 300
 RRR 1540 5050 2048 846 552
 Dam: MLL 1540 5589
 MLL 308 0578

\$W	+53.29
\$F	+54.59
\$G	+33.23
\$YG	+2.70
\$B	+121.37
\$EN	-7.56

CED	BW	WN	YR	SC	Milk	CW	Marb	RE	Fat
+9	+0.7	+42	+80	+0.69	+33	+29	+0.52	+0.45	+0.030
Act. BW	Adj. WW	Adj. YW	Act. SC	ADG	Act. %IMF	Act. REA	Act. RibFat	Act. RmpFat	
70	599		34.00	0.00	0.00	0.00	0.00	0.00	

CALVING EASE EPDs enhanced by 50k genomic test. % Rank in breed: CED-10%, RADG-5%, DMI-1%

Lot 105 **MLL 505 E565**
 DOB: 02/21/17 Bull 18834677 Tattoo: E565

Sire: EF Complement 8088
 Lust Complement 505
 Hinksons Beauty 13 300
 RRR 1540 5050 2048 846 552
 Dam: MLL 1540 5577
 MLL 800 1614

\$W	+47.21
\$F	+75.82
\$G	+29.44
\$YG	-3.61
\$B	+147.61
\$EN	-1.96

CED	BW	WN	YR	SC	Milk	CW	Marb	RE	Fat
+3	+2.3	+56	+102	+0.98	+20	+46	+0.59	+0.50	+0.055
Act. BW	Adj. WW	Adj. YW	Act. SC	ADG	Act. %IMF	Act. REA	Act. RibFat	Act. RmpFat	
78	564	1,076	34.00	0.00	3.70	11.60	0.22	0.23	

EPDs enhanced by 50k genomic test. % rank in breed: WW-30%, YW-30%, RADG-15%, DMI-10%, Doc-20%, \$F-15%, \$B-15%

Lot 106 **MLL 2520 E567**
 DOB: 02/21/17 Bull 18982679 Tattoo: E567

Sire: Gardens Wave
 MLL Wave 2520
 MII Montana 7531
 SPA Bluegrass 800

Dam: MLL 800 2551
 MII Merger 7529

\$W	+24.68
\$F	+26.01
\$G	+41.10
\$YG	+4.48
\$B	+115.96
\$EN	+15.09

CED	BW	WN	YR	SC	Milk	CW	Marb	RE	Fat
+4	+1.9	+39	+64	+0.32	+14	+26	+0.70	+0.33	+0.006
Act. BW	Adj. WW	Adj. YW	Act. SC	ADG	Act. %IMF	Act. REA	Act. RibFat	Act. RmpFat	
70	510	1,040	35.00	0.00	3.87	11.80	0.15	0.21	

EPDs enhanced by 50k genomic test. % rank in breed:
 DMI-2%,\$EN-5%,Mar-25%,\$G-25%

Lot 110 **MLL Future Design E107**
 DOB: 02/26/17 Bull 18844040 Tattoo: E107

Sire: RAB-EGL Future Design
 RAB-GAR Future Design 4518T
 RAB-GAR MS Load UP - 4870N
 LK 07 Fame

Dam: MLL Fame 0520
 MII Montana 7550

\$W	+38.78
\$F	+51.72
\$G	+31.16
\$YG	+0.63
\$B	+106.61
\$EN	+2.25

CED	BW	WN	YR	SC	Milk	CW	Marb	RE	Fat
+3	+2.1	+46	+81	+1.31	+21	+24	+0.52	+0.14	+0.020
Act. BW	Adj. WW	Adj. YW	Act. SC	ADG	Act. %IMF	Act. REA	Act. RibFat	Act. RmpFat	
78	609	1,081	37.00	0.00	3.63	11.40	0.20	0.29	

EPDs enhanced by 50k genomic test. % Rank in breed: RADG-30%, DMI-3%, SC-20%,\$EN-20%

Lot 107 **MLL 5638 E113**
 DOB: 03/01/17 Bull 18953123 Tattoo: E113

Sire: PS Lookout 1253
 MLL Lookout 5638
 MLL 800 2566
 J-C Total 0922

Dam: MLL Total 4640
 MLL Fortune 1633

\$W	+22.63
\$F	+21.31
\$G	+44.08
\$YG	+10.69
\$B	+64.12
\$EN	+14.90

CED	BW	WN	YR	SC	Milk	CW	Marb	RE	Fat
+9	+0.0	+37	+70	+0.55	+13	+7	+0.60	+0.46	-0.008
Act. BW	Adj. WW	Adj. YW	Act. SC	ADG	Act. %IMF	Act. REA	Act. RibFat	Act. RmpFat	
68	565	962	34.00	0.00	3.23	12.90	0.18	0.25	

EPDs enhanced by 50k genomic test. % Rank in breed:
 BW-30%,\$E-5%,\$G-20%,\$YG-10%

Lot 111 **MLL Impression E539**
 DOB: 02/05/17 Bull 18841605 Tattoo: E539

Sire: EF Impression 2648
 Mccall EF Impression 5028
 P A R Falcon Pride P319
 RAB New Standard 123Z

Dam: MLL 123Z 5580
 MLL Daybreak 1513

\$W	+55.99
\$F	+44.63
\$G	+44.19
\$YG	+8.78
\$B	+124.67
\$EN	-13.89

CED	BW	WN	YR	SC	Milk	CW	Marb	RE	Fat
+12	-0.5	+48	+88	+1.46	+32	+34	+0.66	+0.69	-0.007
Act. BW	Adj. WW	Adj. YW	Act. SC	ADG	Act. %IMF	Act. REA	Act. RibFat	Act. RmpFat	
75	546	1,076	37.00	0.00	3.80	12.40	0.12	0.26	

CALVING EASE EPDs enhanced by 50k genomic test. % rank in breed:
 CED-10%,BW-15%,RE-20%,\$W-25%,\$G-20%,\$YG-15%

Lot 108 **MLL All In E578**
 DOB: 02/28/17 Bull 19029364 Tattoo: E578

Sire: A A R Ten X 7008 S A
 Deer Valley All In
 Deer Valley Rita 0274
 RRR 1540 5050 2048 846 552

Dam: MLL 1540/5050 3561
 J-C Cathy 0926

\$W	+26.13
\$F	+10.06
\$G	+47.53
\$YG	+11.15
\$B	+58.31
\$EN	+17.68

CED	BW	WN	YR	SC	Milk	CW	Marb	RE	Fat
+9	+2.0	+40	+64	+1.21	+13	+3	+0.69	+0.38	-0.016
Act. BW	Adj. WW	Adj. YW	Act. SC	ADG	Act. %IMF	Act. REA	Act. RibFat	Act. RmpFat	
75	557	983	36.00	0.00	3.64	13.30	0.22	0.18	

CALVING EASE EPDs enhanced with 50k genomic test. %rank in breed:
 CED-25%CEM-3%,\$EN-4%,Mar-25%

Lot 112 **MLL 5638 E132**
 DOB: 03/03/17 Bull 18953135 Tattoo: E132

Sire: PS Lookout 1253
 MLL Lookout 5638
 MLL 800 2566
 MLL PF29 2577

Dam: MLL 2577 4522
 MLL LK10 2556

\$W	+20.02
\$F	+20.75
\$G	+41.85
\$YG	+7.40
\$B	+88.22
\$EN	+11.79

CED	BW	WN	YR	SC	Milk	CW	Marb	RE	Fat
+9	+0.2	+33	+66	+0.44	+16	+18	+0.63	+0.29	-0.013
Act. BW	Adj. WW	Adj. YW	Act. SC	ADG	Act. %IMF	Act. REA	Act. RibFat	Act. RmpFat	
70	564	1,086	36.00	0.00	4.33	11.80	0.23	0.33	

CALVING EASE EPDs enhanced by 50k genomic test. % Rank in breed:
 BW-30%,DMI-30%,\$EN-10%,\$YG-10%

Lot 109 **MLL Leverage E111**
 DOB: 02/26/17 Bull 18953121 Tattoo: E111

Sire: Gardens Leverage
 Gardens Leverage Q074
 Green Garden Rita F077
 J-C Future Direction 1110

Dam: MLL Future Direction 4531
 MLL 800 2528

\$W	+26.50
\$F	+8.75
\$G	+46.58
\$YG	+6.38
\$B	+95.83
\$EN	+0.16

CED	BW	WN	YR	SC	Milk	CW	Marb	RE	Fat
+7	+0.7	+26	+56	-0.31	+29	+20	+0.83	+0.52	+0.020
Act. BW	Adj. WW	Adj. YW	Act. SC	ADG	Act. %IMF	Act. REA	Act. RibFat	Act. RmpFat	
68	559	1,002	33.00	0.00	4.41	14.30	0.20	0.30	

MODERATE CALVING EASE EPDs enhanced by 50k genomic test. % Rank in breed: DMI-30%, Mar-20%,\$G-20%

Lot 113 **MLL Total E123**
 DOB: 02/25/17 Bull 18953131 Tattoo: E123

Sire: TC Total 410
 J-C Total 0922
 J-C Faye 0257
 RAB 1023 Precision 203u

Dam: MLL 203U 3598
 L K 43 Lana

\$W	+39.16
\$F	+36.41
\$G	+41.42
\$YG	+7.65
\$B	+85.50
\$EN	+0.90

CED	BW	WN	YR	SC	Milk	CW	Marb	RE	Fat
+5	+0.7	+45	+80	+0.17	+21	+16	+0.61	+0.35	-0.005
Act. BW	Adj. WW	Adj. YW	Act. SC	ADG	Act. %IMF	Act. REA	Act. RibFat	Act. RmpFat	
75	602	980	34.00	0.00	3.50	12.40	0.17	0.26	

EPDs enhanced by 50k genomic test. % Rank in breed: BW-30%, DMI-25%,\$E-25%,\$G-25%

Lot 114 **MLL Future Direction E075**
 DOB: 02/16/17 Bull 18844023 Tattoo: E075

Sire: B/R Future Direction 6171
 J-C Future Direction 1110
 J-C Faye 0837
 P S E23

Dam: MLL E23 2538
 McCall ShowStock 310N

\$W	+36.14
\$F	+51.99
\$G	+35.60
\$YG	+8.63
\$B	+128.78
\$EN	+0.09

CED	BW	WN	YR	SC	Milk	CW	Marb	RE	Fat
+5	+1.1	+44	+87	+1.46	+21	+37	+0.43	+0.64	-0.017
Act. BW	Adj. WW	Adj. YW	Act. SC	ADG	Act. %IMF	Act. REA	Act. RibFat	Act. RmpFat	
70	579	1,109	36.00	0.00	3.55	13.90	0.24	0.29	

EPDs enhanced by 50k genomic test. % Rank in breed:RADG-20%, DMI-20%,SC-15%,RE-25%,SB-30%

Lot 117 **MLL Butkus E549**
 DOB: 02/10/17 Bull 19029058 Tattoo: E549

Sire: S A V Final Answer 0035
 SandPoint Butkus X797
 G A R Grid Maker 4603
 J-C Future Direction 1110

Dam: MLL Future Direction 5644
 MLL 0922 2609

\$W	+36.72
\$F	+48.02
\$G	+35.38
\$YG	+6.73
\$B	+112.49
\$EN	+25.41

CED	BW	WN	YR	SC	Milk	CW	Marb	RE	Fat
+7	+1.1	+48	+81	+0.20	+8	+26	+0.47	+0.45	-0.001
Act. BW	Adj. WW	Adj. YW	Act. SC	ADG	Act. %IMF	Act. REA	Act. RibFat	Act. RmpFat	
80	506	1,013	32.00	0.00	2.46	12.30	0.13	0.21	

CALVING EASE EPDs enhanced by 50k genomic test. % rank in breed: RADG-30%,DMI-4%,SEN-2%

Lot 115 **MLL Lookout E097**
 DOB: 02/26/17 Bull 18844032 Tattoo: E097

Sire: J-C SS Objective 0852
 PS Lookout 1253
 J-C Beverly 0882
 J-C Total 0922

Dam: MLL Total 1539
 Falcon Primrose 1292

\$W	+35.32
\$F	+17.63
\$G	+38.49
\$YG	-0.93
\$B	+89.73
\$EN	+10.32

CED	BW	WN	YR	SC	Milk	CW	Marb	RE	Fat
+9	-0.4	+40	+69	+1.37	+18	+22	+0.80	+0.02	+0.022
Act. BW	Adj. WW	Adj. YW	Act. SC	ADG	Act. %IMF	Act. REA	Act. RibFat	Act. RmpFat	
70	539	965	37.00	0.00	4.08	11.00	0.18	0.29	

CALVING EASE EPDs enhanced by 50k genomic test. % Rank in breed: CED-25%, BW-15%, SC-15%, SEN-10%,Mar-20%, SG-30%

Lot 118 **MLL Total E085**
 DOB: 02/07/17 Bull 18976261 Tattoo: E085

Sire: TC Total 410
 J-C Total 0922
 J-C Faye 0257
 Connealy Contrast

Dam: MLL Contrast 3535
 MLL 149u 1524

\$W	+31.32
\$F	+10.54
\$G	+42.34
\$YG	+7.60
\$B	+76.21
\$EN	+6.79

CED	BW	WN	YR	SC	Milk	CW	Marb	RE	Fat
+9	-0.7	+35	+64	-0.15	+21	+15	+0.64	+0.38	+0.001
Act. BW	Adj. WW	Adj. YW	Act. SC	ADG	Act. %IMF	Act. REA	Act. RibFat	Act. RmpFat	
70	540	974	35.00	0.00	3.72	11.50	0.11	0.16	

CALVING EASE EPDs enhanced by 50k genomic test. % Rank in breed: CED-25%, BW-10%, Doc-20%, SEN-25%, SG-235%, SYG-25%

Lot 116 **MLL 2520 E591**
 DOB: 03/17/17 Bull 18982680 Tattoo: E591

Sire: Gardens Wave
 MLL Wave 2520
 MII Montana 7531
 SPA Bluegrass 800

Dam: MLL 800 2530
 Meads Miss Erica

\$W	+27.62
\$F	+23.87
\$G	+44.39
\$YG	+6.93
\$B	+111.94
\$EN	+25.18

CED	BW	WN	YR	SC	Milk	CW	Marb	RE	Fat
-1	+3.7	+46	+63	+0.56	+9	+21	+0.73	+0.47	+0.008
Act. BW	Adj. WW	Adj. YW	Act. SC	ADG	Act. %IMF	Act. REA	Act. RibFat	Act. RmpFat	
75	611	1,003	38.00	0.00	3.98	12.70	0.15	0.26	

EPDs enhanced by 50k genomic test. % Rank in breed:DMI-1%,SEN-2%,Mar-25%,SG-15%,SYG-25%

Lot 119 **MLL Future Design E109**
 DOB: 02/25/17 Bull 19045112 Tattoo: E109

Sire: RAB-EGL Future Design
 RAB-GAR Future Design 4518T
 RAB-GAR MS Load UP - 4870N
 B3R Tender Ten R065

Dam: MLL Tender Ten 1503
 J-C GAR Objective 0957

\$W	+43.55
\$F	+58.78
\$G	+32.75
\$YG	-0.64
\$B	+138.97
\$EN	-5.64

CED	BW	WN	YR	SC	Milk	CW	Marb	RE	Fat
+13	-0.4	+45	+92	-0.12	+25	+44	+0.60	+0.25	+0.009
Act. BW	Adj. WW	Adj. YW	Act. SC	ADG	Act. %IMF	Act. REA	Act. RibFat	Act. RmpFat	
70	526	1,008	35.00	0.00	3.59	11.50	0.20	0.25	

CALVING EASE EPDs enhanced by 50k genomic test. % Rank in breed: CED-5%,BW-15%, RADG-15%,DMI-25%,F-30%, SB-20%



Lot 120 **MLL Leverage E133**
 DOB: 03/04/17 Bull 18953136 Tattoo: E133

Sire: Gardens Leverage
 Gardens Leverage Q074
 Green Garden Rita F077
 H A R B Freedom 1156-288

Dam: MLL Freedom 4645
 MLL Retail Product 8515

\$W	+38.66
\$F	+17.56
\$G	+40.55
\$YG	-0.71
\$B	+90.70
\$EN	-5.65

CED	BW	WN	YR	SC	Milk	CW	Marb	RE	Fat
+3	+0.7	+33	+67	+0.66	+32	+22	+0.87	+0.20	+0.040
Act. BW	Adj. WW	Adj. YW	Act. SC	ADG	Act. %IMF	Act. REA	Act. RibFat	Act. RmpFat	
70	598	1,009	36.00	0.00	4.89	12.30	0.22	0.34	

EPDs enhanced by 50k genomic test. % Rank in breed: Mar-15%,SG-25%

Lot 121 **MLL 2520 E588**
DOB: 03/13/17 **Bull 18982677** **Tattoo: E588**

Sire: Gardens Wave
 MLL Wave 2520
 MII Montana 7531

Dam: Connealy Final Product
 MLL Final Product 3501
 MLL 800 1598

\$W	+38.71
\$F	+43.34
\$G	+41.56
\$YG	+9.27
\$B	+132.54
\$EN	+2.02

CED	BW	WN	YR	SC	Milk	CW	Marb	RE	Fat
+ 3	+ 1.8	+ 44	+ 77	+ 0.97	+ 22	+ 33	+ 0.57	+ 0.82	+ 0.005
Act. BW	Adj. WW	Adj. YW	Act. SC	ADG	Act. % IMF	Act. REA	Act. RibFat	Act. RmpFat	
65	585	1,035	36.00	0.00	3.76	14.40	0.21	0.26	

EPDs enhanced by 50k genomic test. % Rank in breed:
 RADG-20%,DMI-3%,\$EN-25%,RE-10%, \$B-30%

Lot 122 **MLL Future Direction E032**
DOB: 02/03/17 **Bull 18844007** **Tattoo: E032**

Sire: B/R Future Direction 6171
 J-C Future Direction 1110
 J-C Faye 0837

Dam: ALC Big Eye D09N
 MLL Big Eye 2513
 A6 Princess

\$W	+46.23
\$F	+72.77
\$G	+25.25
\$YG	+4.56
\$B	+139.84
\$EN	-8.91

CED	BW	WN	YR	SC	Milk	CW	Marb	RE	Fat
+ 12	+ 0.2	+ 45	+ 97	+ 0.65	+ 28	+ 45	+ 0.29	+ 0.58	+ 0.002
Act. BW	Adj. WW	Adj. YW	Act. SC	ADG	Act. % IMF	Act. REA	Act. RibFat	Act. RmpFat	
70	503	1,124	36.00	0.00	4.06	12.50	0.23	0.28	

CALVING EASE EPDs enhanced by 50k genomic data. % Rank in breed:
 CED-10%, BW-25%, RADG-10%, DMI-15%, CEM-15%, \$F-20, \$B-20%

Lot 123 **MLL 2520 E598**
DOB: 03/28/17 **Bull 18982678** **Tattoo: E598**

Sire: Gardens Wave
 MLL Wave 2520
 MII Montana 7531

Dam: LK 07 Fame
 MLL Fame 3546
 MLL Focus 0507

\$W	+42.21
\$F	+32.02
\$G	+44.59
\$YG	+3.33
\$B	+97.12
\$EN	+13.43

CED	BW	WN	YR	SC	Milk	CW	Marb	RE	Fat
1 + 5	1 + 1.6	1 + 43	1 + 69	1 + 1.16	1 + 19	+ 15	+ 0.87	+ 0.21	+ 0.021
Act. BW	Adj. WW	Adj. YW	Act. SC	ADG	Act. % IMF	Act. REA	Act. RibFat	Act. RmpFat	
70	657	980	36.00	0.00	4.84	11.40	0.25	0.30	

EPDs enhanced by 50k genomic test. % Rank in breed:
 DMI-2%,CEM-15%,\$EN-10%, Mar-15%,\$G-15%