



McKenzie **Land & Livestock**

Offering:

- ◆ 85+ yearling and 2 year old registered and commercial Angus bulls
- ◆ Ranch raised and ready to work

8th Annual Angus Bull Sale

Tuesday, March 18, 2014

Auction 1:00 PM

Fort Stockton, TX

Houston McKenzie

432.553.6670

Sarah McKenzie Downing

915.637.3845



8 Ranch
HC 73 Box 3
McCamey, Texas 79752

Phone: 432.395.2250
Cell: 432.553.6670
houston.mckenzie@yahoo.com

Greetings,

Welcome to our 8th Annual Angus Bull Sale. Looking back on the last eight years, it is amazing to look at the changes we have made in our herd. We think we have made a lot of progress towards providing some nice Angus bulls for you, our customers.

Each year we continue to refine our breeding program and criteria; selecting sires that bring superior traits to our herd. Our goal is to use genetics that will make you more money in the commercial herd. We know you can get great genetics from many breeders, but we believe good Angus bulls that are raised here in our rocky, dry, tough country have added value. MLL bulls know prickly pear, burro grass and chamisa and are grown out in large rocky traps; so they are in good condition to go to work. Our bulls are young but they were raised here and will work in this environment with little transition time.

We appreciate your support at our sales and the confidence you have in our animals.

Thank you,

Houston

Houston McKenzie
President, McKenzie Land & Livestock

Sarah

Sarah McKenzie Downing
Herd Manager



Sale Terms and Conditions

Sale order:

Bulls will sell in the order listed in the catalog. The LOT number can be found on the green tag in the left ear. Sale order is determined by average daily gain within the following groups: Registered Larger Bulls, Commercial Larger Bulls, Commercial Heifers, Registered Smaller Bulls and Commercial Smaller Bulls. Please listen for announcements regarding sale order.

Palma Commercial Bulls:

Commercial bulls from our MLL Palma Ranch in Santa Rosa, New Mexico are in the sale again this year. These bulls are out of commercial cows that we used at Fort Stockton, you might remember the "Cortese" cows. The cows were moved to Palma in the fall of 2011 to "greener pastures." Our cows did great up there, had a lot more feed and raised bigger calves than the Texas cows. Because they were in a commercial setting, we have no data on dam or sire of these bulls. But we can tell you they are straight Angus and all have registered Angus sires.

Fertility:

All sale bulls are guaranteed virgin and have passed a breeding soundness exam with excellent semen quality. The testing of these animals was performed on February 19 and 25, 2014 by Dr. Ronald Box, DVM.

Although these bulls are young, yearling bulls can be used effectively when turned out with cows at a stocking ratio of 15 cows/1 bull.

Delivery options:

Buyers are responsible for transportation of bulls purchased at the sale. New Mexico buyers will have the option of picking up their bulls at the MLL Palma Ranch; 40 miles west of Santa Rosa at no additional charge.

Loading:

All bulls will be paid for before loading unless other arrangements are made. Please see the cashier to settle up prior to loading your bull; you will need your invoice/loading ticket when picking up your bull(s). Please listen to general announcements indicating location of loading and personnel responsible for loading. *Please help us and double check the eartag and lot number to ensure that you are getting the bull you purchased.*

Guarantee: We guarantee that all animals in the sale are fertile to the best of our knowledge. If a bull is injured at any time in the first 12 months of ownership so as to make them functionally infertile, we will offer a suitable replacement if available. If not available we will offer you a credit equal to the bull's purchase price minus the salvage value received for that bull. We ask that you contact us prior to the disposal of the animal. HOWEVER, we cannot offer a guarantee on a death of an animal.

Please remember:

It is important to consider that these are young bulls; they will need to be taken care of to ensure that they continue to grow out good and be able to serve your herd. It is essential that a young bull not get too thin.

Sire Information:

The first section of the catalog features the sires of the bulls for sale. The first Artificial Insemination (AI) sires include: ALC Big Eye, B3R Tender Ten, Connealy Final Product, GAR Predestined, Gardens Wave and SS Objective T510 OT26; the rest of the sires are natural service sires owned by MLL.

CATALOG INFORMATION

REGISTERED OR COMMERCIAL?

There are several ways to differentiate between the registered and commercial animals in the sale. All commercial animals have a "C" before the number in their name. All commercial animals have a "registration number" that starts with a "6".

Example: MLL OBJECTIVE C3006; 622639910 (*this is an AI calf but is un-registerable because his great-granddam's papers were not in order.*) The Angus Association allows us to collect and track data on the commercial animals, so they are treated just like our registered animals.

COMMERCIAL HEIFERS

We are selling 16 commercial heifers from our herd. These heifers have been treated just like registered animals with the exception that we did not find out the sire. There are several AI heifers that are for sale and they will be sold in lots of 4 head/lot.

COMMENTS SECTION

This section contains information that is not shown in the table, but that we feel adds additional sorting tools for the customer. You will find the following comments in this section: Calving Ease, Average Daily Gain, Average Daily Gain Ratio, Top % EPD comparison and any genetic testing that was done.

CALVING EASE

Bulls that we feel comfortable in using on heifers are labeled ****CALVING EASE PROSPECT****. You can also refer to the CED EPD to help with selecting a calving ease bull. However, it is important to remember that there other factors that play into a heifer's unassisted delivery and we cannot guarantee a calving ease.

AVERAGE DAILY GAIN(ADG)

This is the average daily gain of the bull during the 95 day gain test. . Bulls were put on feed 11/6/13 and a final weight was taken 2/12/14.

GAIN RATIO (ADG Ratio):

The bulls in the sale are ranked by their gain ratio within their respective groups as explained under sale order The top gaining registered bull will be the first in the sale. You will see the gain ratio in the catalog under the "notes" section (**ADG Ratio**).

TOP % EPD comments

These numbers highlight how that individual bull ranks within the entire breed. For example: MLL WAVE 3522 ranks: Top 10% CED EPD, Top 4% REA EPD...this bulls CED EPD ranks in the top 10% of the Angus breed and in the top 4% of the Angus breed for REA EPD.



• • •
One ton of alfalfa hay will be given to the high dollar volume buyer and one ton of alfalfa hay will be given to the buyer of the high selling bull.
• • •

Glossary of Terms

Expected Progeny Difference (EPD), is the prediction of how future progeny of each animal are expected to perform relative to the progeny of other animals listed in the database. EPDs are expressed in units of measure for the trait, plus or minus. [Interim EPDs](#) may appear on young animals when their performance has yet to be incorporated into the American Angus Association National Cattle Evaluation (NCE) procedures. This EPD will be preceded by an "I", and may or may not include the animal's own performance record for a particular trait, depending on its availability, appropriate contemporary grouping, or data edits needed for NCE.

\$Value Indexes, are multi-trait selection indexes, expressed in dollars per head, to assist beef producers by adding simplicity to genetic selection decisions. The \$Value is an estimate of how future progeny of each sire are expected to perform, on average, compared to progeny of other sires in the database if the sires were randomly mated to cows and if calves were exposed to the same environment.

PRODUCTION EPDs

Calving Ease Direct (CED), is expressed as a difference in percentage of unassisted births, with a higher value indicating greater calving ease in first-calf heifers. It predicts the average difference in ease with which a sire's calves will be born when he is bred to first-calf heifers.

Birth Weight EPD (BW), expressed in pounds, is a predictor of a sire's ability to transmit birth weight to his progeny compared to that of other sires.

Weaning Weight EPD (WW), expressed in pounds, is a predictor of a sire's ability to transmit weaning growth to his progeny compared to that of other sires.

Yearling Weight EPD (YW), expressed in pounds, is a predictor of a sire's ability to transmit yearling growth to his progeny compared to that of other sires.

Scrotal Circumference EPD (SC), expressed in centimeters, is a predictor of the difference in transmitting ability for scrotal size compared to that of other sires.

MATERNAL EPDs

Maternal Milk EPD (Milk), is a predictor of a sire's genetic merit for milk and mothering ability as expressed in his daughters compared to daughters of other sires. In other words, it is that part of a calf's weaning weight attributed to milk and mothering ability.

Cow Energy Value (\$EN), expressed in dollar savings per cow per year, assesses differences in cow energy requirements as an expected dollar savings

difference in daughters of sires. A larger value is more favorable when comparing two animals (more dollars saved on feed energy expenses).

Components for computing the cow \$EN savings difference include lactation energy requirements and energy costs associated with differences in mature cow size.

CARCASS EPDs

Carcass Weight EPD (CW), expressed in pounds is a predictor of the differences in hot carcass weight of a sire's progeny compared to progeny of other sires.

Marbling EPD (Marb), expressed as a fraction of the difference in USDA marbling score of a sire's progeny compared to progeny of other sires.

Ribeye Area EPD (RE), expressed in square inches, is a predictor of the difference in ribeye area of a sire's progeny compared to progeny of other sires.

Fat Thickness EPD (Fat), expressed in inches, is a predictor of the differences in external fat thickness at the 12th rib (as measured between the 12th and 13th ribs) of a sire's progeny compared to progeny of other sires.

\$VALUE INDEXES

\$Value indexes are multi-trait selection indexes, expressed in dollars per head, to assist beef producers by adding simplicity to genetic selection decisions. The \$Value is an estimate of how future progeny of each sire are expected to perform, on average, compared to progeny of other sires in the database if the sires were randomly mated to cows

and if calves were exposed to the same environment.

Weaned Calf Value (\$W), an index value expressed in dollars per head, is the expected average difference in future progeny performance for pre-weaning merit. \$W includes both revenue and cost adjustments associated with differences in birth weight, weaning direct growth, maternal milk and mature cow size.

Feedlot Value (\$F), an index value expressed in dollars per head, is the expected average difference in future progeny performance for postweaning merit compared to progeny of other sires.

Grid Value (\$G), an index value expressed in dollars per head, is the expected average difference in future progeny performance for carcass grid merit compared to progeny of other sires.

Quality Grade (\$QG) \$QG represents the quality grade segment of the economic advantage found in \$G. \$QG is intended for the specialized user wanting to place more emphasis on improving quality grade.

The carcass marbling (Marb) EPD contributes to \$QG.

Yield Grade (\$YG) \$YG represents the yield grade segment of the economic advantage found in \$G. \$YG is intended for the specialized user wanting to place more emphasis on red meat yield. It provides a multi-trait approach to encompass ribeye, fat thickness and weight into an economic value for red meat yield.

Beef Value (\$B), an index value expressed in dollars per head, is the expected average difference in future progeny performance for postweaning and carcass value compared to progeny of other sires.

ULTRASOUND DATA

Ultrasound allows for the evaluation of the carcass traits on a live animal. The three carcass measures that the ultrasound system estimates are: back fat (Rib), rib eye area (REA) and intramuscular fat (%IMF).

The numbers shown on in the catalog are the actual data for ultrasound data.

Genetic Defect Information

We test all the bulls registered and commercial) raised on the Fort Stockton ranch for any genetic defects that they may be at risk of carrying. Testing is done through Zoetis Genetics and the genetic status is listed in the notes section. You will see that we have tested some animals for the following: **AM**(*Arthrogryposis Multiplex*), **CA**(*Contractural Arachnodactyly*), **NH**(*Neuropathic Hydrocephalus*) and **DD**(*Developmental Duplication*). We have made a practice of culling animals that are carriers for AM, CA and NH so only a few of the bulls will have to be tested for these defects and will be noted by having the defect abbreviation followed by a "F" for example: **CAF**. We do not routinely sell defect carriers; the only carriers that you will find in the sale will be DD carriers. All other animals will be listed as "F". We cannot guarantee defect status of Palma bulls, as they are strictly a commercially produced animal, but in a commercial setting there should be little risk of defect expression.

New Defect: DD Most recently a new defect called Developmental Duplication (DD) has been found in the breed. DD is a simply inherited, recessive genetic condition that can cause (although not always) an affected animal to be born with an extra front limb. While this is recognized as a genetic defect and is known to be simply inherited; it is not required to test for this defect prior to registration. (*Please see additional information on DD*).

We have tested any of our bulls that could be a potential carrier. There are several top bulls in this sale that are DDC (DD Carriers); but we feel that the risk of this defect actually showing up in a registered herd is manageable and poses *little risk for the commercial producer*. **Carriers will be noted in the notes section as DDC.**

Lot AI *GAR PREDESTINED*
DOB: 08/16/99 **Bull #** 13395344 **Tattoo:** 5899

Sire:	V D A R New Trend 315	\$W	+47.64
	B/R New Design 036	\$F	+35.74
	B/R Blackcap Empress 76	\$G	+52.25
	N Bar Emulation EXT	\$YG	+3.24
Dam:	G A R Ext 4206	\$B	+101.10
	G A R 6807 Traveler 1432	\$EN	+7.41

CED	BW	WN	YR	SC	Milk	CW	Marb	RE	Fat
+2	+4.0	+51	+91	+0.56	+28	+32	+1.39	+0.59	+0.037
Act. BW	Adj. WW	Adj. YW	Act. SC	ADG	Act. %IMF	Act. REA	Act. RibFat	Act. RmpFat	

Continues to be a breed leader ranking in the 1% of the breed for marbeling, SQG and \$B, top 2% \$G and top 3% \$W. Excellent daughters. 3 sons sell.

Lot AI *B3R TENDER TEN R065*
DOB: 11/06/05 **Bull** 15327898 **Tattoo:** R065

Sire:	B3R 8082 3173 Elector 4013	\$W	+38.46
	B3R 0004 Electra 8082-8017	\$F	+2.99
	B3R 8017 466 Lady 7164	\$G	+20.42
	Finks 5522-6148	\$YG	-12.52
Dam:	B3R N127 5522 Blackbird 203	\$B	+55.91
	B3R Blackbird 2075 P	\$EN	+13.54

CED	BW	WN	YR	SC	Milk	CW	Marb	RE	Fat
+18	-3.3	+30	+56	+0.47	+25	+21	+0.66	-0.21	+0.076
Act. BW	Adj. WW	Adj. YW	Act. SC	ADG	Act. %IMF	Act. REA	Act. RibFat	Act. RmpFat	

CALVING EASE Top 1% CED EPD and top 4% \$EN. Calves are gentle and slick haired. 2 sons sell.

Lot AI *SS OBJECTIVE 7510 0726*
DOB: 04/25/00 **Bull #** 13776378 **Tattoo:** 0726

Sire:	D H D Traveler 6807	\$W	+54.56
	S S Traveler 6807 T510	\$F	+64.39
	S S Miss Hi Spade A114	\$G	+50.99
	S S Rito Rito R76 R011	\$YG	+11.75
Dam:	S S Miss Rita R011 7R8	\$B	+86.45
	S S Miss Ultress U56	\$EN	-14.44

CED	BW	WN	YR	SC	Milk	CW	Marb	RE	Fat
+12	+1.0	+69	+119	+0.48	+30	+18	+0.90	+0.68	-0.017
Act. BW	Adj. WW	Adj. YW	Act. SC	ADG	Act. %IMF	Act. REA	Act. RibFat	Act. RmpFat	
66	623								

CALVING EASE Ranks among the top 40 proven sires for \$W, fast growing, has excellent daughters. 4 Objective sons sell in this sale.

Lot AI *CONNELLY FINAL PRODUCT*
DOB: 01/23/07 **Bull** 15848422 **Tattoo:** 7212

Sire:	G A R Retail Product	\$W	+46.89
	Connelly Product 568	\$F	+66.05
	Pride Fine of Conanga 566	\$G	+23.61
	Connelly Deep Canyon 454	\$YG	+2.63
Dam:	Ebonista of Conanga 471	\$B	+76.53
	Ebonista of Conanga 5469	\$EN	-39.02

CED	BW	WN	YR	SC	Milk	CW	Marb	RE	Fat
+3	+0.8	+66	+119	+0.85	+43	+33	+0.33	+0.82	+0.065
Act. BW	Adj. WW	Adj. YW	Act. SC	ADG	Act. %IMF	Act. REA	Act. RibFat	Act. RmpFat	

Lots of muscle. We like the FP daughters we have seen. Top 5% in \$W in the breed. 2 sons sell.

Lot AI *CONNELLY FORWARD*
DOB: 01/14/06 **Bull #** 15491633 **Tattoo:** 623

Sire:	Connelly Lead On	\$W	+62.89
	Connelly Onward	\$F	+52.16
	Altune of Conanga 6104	\$G	+32.76
	G A R Grid Maker	\$YG	+9.32
Dam:	Becky Lee of Conanga 74	\$B	+84.98
	Beckon Lee of Conanga 73	\$EN	+0.91

CED	BW	WN	YR	SC	Milk	CW	Marb	RE	Fat
+17	+1.5	+58	+106	+0.93	+33	+34	+0.39	+0.98	+0.018
Act. BW	Adj. WW	Adj. YW	Act. SC	ADG	Act. %IMF	Act. REA	Act. RibFat	Act. RmpFat	

CALVING EASE Complete and balanced EPDs with a positive \$EN. 3 sons sell.

Lot AI *ALC BIG EYE D09N*
DOB: 02/15/03 **Bull #** 14560689 **Tattoo:** D09N

Sire:	G A R Precision 1680	\$W	+35.68
	C A Future Direction 5321	\$F	+37.04
	C A Miss Power Fix 308	\$G	+43.51
	S V F Bandler	\$YG	+14.44
Dam:	ALC Hazel L12L	\$B	+80.81
	Alc Hazel K14H	\$EN	-22.07

CED	BW	WN	YR	SC	Milk	CW	Marb	RE	Fat
+11	+2.1	+51	+92	+0.52	+36	+22	+0.54	+1.33	+0.018
Act. BW	Adj. WW	Adj. YW	Act. SC	ADG	Act. %IMF	Act. REA	Act. RibFat	Act. RmpFat	

CALVING EASE We have consistently gotten thick calves out of this bull. 1 son sells.

Lot AI *GARDENS WAVE*
DOB: 10/11/00 **Bull** 13818764 **Tattoo:** A272

Sire:	Summitcrest Scotch Cap 0B45	\$W	+53.50
	Gardens Highmark	\$F	+7.92
	Green Garden Pride 6128 S1	\$G	+55.59
	N Bar Emulation EXT	\$YG	+10.00
Dam:	Green Garden Lady 6255 S2	\$B	+103.09
	Green Garden Lady 4256 S2	\$EN	+41.10

CED	BW	WN	YR	SC	Milk	CW	Marb	RE	Fat
+11	+0.3	+37	+63	+0.78	+15	+31	+1.22	+1.08	+0.027
Act. BW	Adj. WW	Adj. YW	Act. SC	ADG	Act. %IMF	Act. REA	Act. RibFat	Act. RmpFat	

CALVING EASE One of the most unique bulls in the Angus Breed. Ranks top 1% \$EN, \$W and top 2% \$B. Only one other proven bull ranks in the top 5% for all major indexes. 2 sons sell.

Lot AI *B P F Special Focus 504*
DOB: 01/16/05 **Bull #** 15140670 **Tattoo:** 504

Sire:	S A F Focus of E R	\$W	+45.18
	MYTTY IN FOCUS	\$F	+43.43
	Mytty Countess 906	\$G	+32.59
	J R Something Special	\$YG	-3.11
Dam:	B P F Black Cash 341	\$B	+89.84
	B P F Black Cash 944	\$EN	-14.27

CED	BW	WN	YR	SC	Milk	CW	Marb	RE	Fat
+16	-1.1	+54	+98	+1.26	+32	+40	+0.76	+0.55	+0.069
Act. BW	Adj. WW	Adj. YW	Act. SC	ADG	Act. %IMF	Act. REA	Act. RibFat	Act. RmpFat	

CALVING EASE This son of In Focus offers calving ease, solid growth and moderate mature size. 1 son to sell.

Lot AI *BC Classic 385-7*
DOB: 04/18/07 **Bull** 15748956 **Tattoo:** 3857

Sire:	D H D Traveler 6807	\$W	+42.10
	BC Classic 443 6807 RT 2424	\$F	+36.11
	Double W Miss Primrose E64	\$G	+23.77
Dam:	O C C Legend 616L	\$YG	+1.54
	B C Mignonne's Libby 385	\$B	+85.89
	Gibbet Hill Mignonne E37	\$EN	-0.15

CED	BW	WN	YR	SC	Milk	CW	Marb	RE	Fat
+5	+1.7	+58	+94	+0.67	+21	+46	+0.36	+0.61	+0.031
Act. BW	Adj. WW	Adj. YW	Act. SC	ADG	Act. %IMF	Act. REA	Act. RibFat	Act. RmpFat	

Overall balanced bull. 1 son sells.

Lot MLL *J-C 7074L 0922*
DOB: 02/05/09 **Bull** 16418897 **Tattoo:** 0922

Sire:	Bon View New Design 208	\$W	+22.67
	TC Total 410	\$F	+19.87
	TC Erica Eileen 2047	\$G	+37.71
Dam:	Stepladder Fame 740	\$YG	+10.72
	J-C Faye 0257	\$B	+67.61
	B&H Faye 9683	\$EN	+5.28

CED	BW	WN	YR	SC	Milk	CW	Marb	RE	Fat
+8	-1.1	+37	+73	+0.07	+17	+17	+0.48	+0.53	-0.021
Act. BW	Adj. WW	Adj. YW	Act. SC	ADG	Act. %IMF	Act. REA	Act. RibFat	Act. RmpFat	

CALVING EASE Is an easy keeper and gentle, gentle, gentle. Positive \$E and moderate Milk make his daughters some of our favorite young cows. 4 sons sell.

Lot AI *Connealy Contrast*
DOB: 02/02/05 **Bull #** 15150605 **Tattoo:** 5210

Sire:	Connealy Timeline	\$W	+34.98
	Connealy Danny Boy	\$F	+27.89
	Energy of Conanga 4851	\$G	+28.24
Dam:	Rito 616 of 4B20 6807	\$YG	+0.53
	Doris of Conanga 669	\$B	+80.96
	Date of Conanga 670B	\$EN	+5.27

CED	BW	WN	YR	SC	Milk	CW	Marb	RE	Fat
+10	-0.9	+41	+81	+1.44	+22	+36	+0.50	+0.49	+0.042
Act. BW	Adj. WW	Adj. YW	Act. SC	ADG	Act. %IMF	Act. REA	Act. RibFat	Act. RmpFat	

CALVING EASE Positive \$E with moderate milk and growth, perfect for our area. 1 commercial bull to sell.

Lot MLL *J-C Future Direction 0952*
DOB: 03/20/09 **Bull** 16416914 **Tattoo:** 0952

Sire:	C A Future Direction 5321	\$W	+37.14
	B/R Future Direction 6171	\$F	+44.77
	B/R Blackcap Empress 470	\$G	+24.51
Dam:	F A R Krugerrand 410H	\$YG	+5.58
	J-C Julie 0586	\$B	+84.28
	J-C Julie 0249	\$EN	-2.70

CED	BW	WN	YR	SC	Milk	CW	Marb	RE	Fat
+9	+0.6	+54	+99	+1.54	+21	+43	+0.28	+0.61	-0.001
Act. BW	Adj. WW	Adj. YW	Act. SC	ADG	Act. %IMF	Act. REA	Act. RibFat	Act. RmpFat	

CALVING EASE Top Indexing Bull at the Tucumcari Bull Test 2010. 4 sons sell.

Lot AI *SydGen Trust 6228*
DOB: 02/07/06 **Bull** 15354674 **Tattoo:** 6228

Sire:	C A Future Direction 5321	\$W	+46.56
	SCR Promise 4042	\$F	+42.69
	SCR Queen 2167	\$G	+48.42
Dam:	Bon View New Design 1407	\$YG	+10.97
	SydGen Forever Lady 4413	\$B	+99.74
	S A F Forever Lady 0182	\$EN	-1.64

CED	BW	WN	YR	SC	Milk	CW	Marb	RE	Fat
+4	-0.2	+58	+99	+0.99	+23	+34	+0.83	+0.75	-0.028
Act. BW	Adj. WW	Adj. YW	Act. SC	ADG	Act. %IMF	Act. REA	Act. RibFat	Act. RmpFat	

Powerful overall EPD profile. Initially considered a calving ease sire we used Trust for 2 seasons on heifers without a problem, now he is considered a cow bull. 1 son sells.

Lot MLL *RAB-GAR OBJECTIVE 149U*
DOB: 02/02/08 **Bull** 16387915 **Tattoo:** 149U

Sire:	S S Traveler 6807 T510	\$W	+45.70
	S S OBJECTIVE T510 0T26	\$F	+29.39
	S S Miss Rita R011 7R8	\$G	+45.18
Dam:	RAB-GAR Load Up 4049J	\$YG	+12.24
	RAB-GAR MS Load UP 4508P	\$B	+72.76
	RAB-GAR MS Design 4740L	\$EN	-1.46

CED	BW	WN	YR	SC	Milk	CW	Marb	RE	Fat
+12	+0.3	+56	+88	+0.60	+24	+15	+0.66	+0.83	+0.000
Act. BW	Adj. WW	Adj. YW	Act. SC	ADG	Act. %IMF	Act. REA	Act. RibFat	Act. RmpFat	

CALVING EASE This was a great herd sire for us. Gentle and easy keeping. We used him on heifers as a clean up bull. 4 sons sell.

Lot MLL *RAB-GAR Future Design 45187*
DOB: 01/01/07 **Bull** 16028944 **Tattoo:** 45187

Sire:	C A Future Direction 5321	\$W	+30.63
	RAB-EGL Future Design	\$F	+35.28
	Eagle 1407 Isabel 2215	\$G	+36.31
Dam:	RAB-GAR Load Up 4049J	\$YG	+5.57
	RAB-GAR MS Load UP - 4870N	\$B	+76.29
	RAB-GAR MS Primetime 4642K	\$EN	-1.88

CED	BW	WN	YR	SC	Milk	CW	Marb	RE	Fat
+14	-0.9	+39	+86	+1.00	+25	+24	+0.59	+0.60	+0.030
Act. BW	Adj. WW	Adj. YW	Act. SC	ADG	Act. %IMF	Act. REA	Act. RibFat	Act. RmpFat	

CALVING EASE This big framed bull is easy to get along with and keeps well in our country. 6 sons sell.

Lot MLL *RAB 1023 PRECISION 203U*
DOB: 01/04/08 **Bull** 16438728 **Tattoo:** 203U

Sire:	G A R Precision 1680	\$W	+32.72
	E&B 1680 Precision 1023	\$F	+28.74
	E&b 6807 Lady Traveler 61	\$G	+39.22
Dam:	MYTTY IN FOCUS	\$YG	+7.51
	RAB MS IN Focus 902S	\$B	+94.02
	RAB MS 1407 608P	\$EN	-2.59

CED	BW	WN	YR	SC	Milk	CW	Marb	RE	Fat
+12	-0.3	+47	+84	+0.80	+22	+38	+0.62	+0.80	+0.010
Act. BW	Adj. WW	Adj. YW	Act. SC	ADG	Act. %IMF	Act. REA	Act. RibFat	Act. RmpFat	

CALVING EASE Used on heifers as a clean up bull. Top 10% \$B. 3 sons sell.

Lot **MLL** *LK 07 Fame*
DOB: 03/04/03 Bull **14605644** **Tattoo: LK07**

Sire:	Minerts Fortune 2000	\$W	+30.41
	S A F Fame	\$F	-0.01
	S A F Royal Lass 1027	\$G	+27.39
	G C C Broker	\$YG	+5.96
Dam:	Enchantress C304	\$B	+39.20
	Black Bear Blossom 110	\$EN	+11.02

CED	BW	WN	YR	SC	Milk	CW	Marb	RE	Fat
+2	+2.2	+42	+58	+0.69	+18	+5	+0.34	+0.04	-0.006
Act. BW	Adj. WW	Adj. YW	Act. SC	ADG	Act. %IMF	Act. REA	Act. RibFat	Act. RmpFat	

Possible Calving Ease We used this bull for 5 years on heifers with no problem. Positive \$E and moderate Milk make great cows for this area. 7 sons sell.

Lot **MLL** *SPA BLUEGRASS 800*
DOB: 01/12/08 Bull **16280789** **Tattoo: 800**

Sire:	Hylene Right Time 338	\$W	+29.74
	Bluegrass Right Time 500	\$F	+16.03
	Bluegrass Bonny 200 900	\$G	+25.30
	Rito 3M1 of 5H11 GT Maximum	\$YG	+2.69
Dam:	S P A 825 93 3M1	\$B	+66.94
	S P A Extra Lady	\$EN	+1.21

CED	BW	WN	YR	SC	Milk	CW	Marb	RE	Fat
+9	+0.6	+40	+71	+0.55	+23	+26	+0.37	+0.21	+0.009
Act. BW	Adj. WW	Adj. YW	Act. SC	ADG	Act. %IMF	Act. REA	Act. RibFat	Act. RmpFat	

Possible Calving Ease Daughters have been good producers for us. 3 sons sell.

Lot **MLL** *P S E23*
DOB: 02/23/08 Bull **16131434** **Tattoo: E23**

Sire:	Bon View New Design 208	\$W	+32.99
	Connealy Whitman	\$F	+9.35
	Ella Tina of Conanga 989	\$G	+43.99
	Ranger G 1720	\$YG	+8.03
Dam:	P S Miss 758	\$B	+90.59
	P S 162 of Ext	\$EN	-3.62

CED	BW	WN	YR	SC	Milk	CW	Marb	RE	Fat
+5	+1.0	+39	+65	+0.71	+29	+30	+0.77	+0.51	-0.016
Act. BW	Adj. WW	Adj. YW	Act. SC	ADG	Act. %IMF	Act. REA	Act. RibFat	Act. RmpFat	

Moderate sized bull for mature cows. Fast growth and great carcass. Top 10% breed in \$B. 10 sons sell.

Lot **MLL** *PACKARD FOCUS 29*
DOB: 01/17/09 Bull **16398233** **Tattoo: 29**

Sire:	MYTTY IN FOCUS	\$W	+41.21
	Packard In Focus 137	\$F	+32.86
	Packard Emulass 75	\$G	+34.60
	Connealy Lead On	\$YG	+6.53
Dam:	Packard Firefly 36	\$B	+69.20
	Packard Firefly 43	\$EN	+2.98

CED	BW	WN	YR	SC	Milk	CW	Marb	RE	Fat
+6	+0.4	+49	+88	+0.90	+23	+20	+0.51	+0.14	-0.027
Act. BW	Adj. WW	Adj. YW	Act. SC	ADG	Act. %IMF	Act. REA	Act. RibFat	Act. RmpFat	

Larger framed bull for use on cows. This bull is gentle. 5 sons sell.

Lot **MLL** *LK11 Pendle*
DOB: 03/16/09 Bull **16476198** **Tattoo: LK11B**

Sire:	S A V Final Answer 0035	\$W	+31.63
	H A R B Black Lady 375 J H	\$F	+33.15
	F A R Krugerrand 410H	\$G	+15.49
Dam:	LK 24 Velvet	\$YG	-5.49
	LK Morgan	\$B	+77.27
		\$EN	-6.78

CED	BW	WN	YR	SC	Milk	CW	Marb	RE	Fat
+5	+2.3	+51	+89	+0.34	+24	+46	+0.33	+0.17	+0.035
Act. BW	Adj. WW	Adj. YW	Act. SC	ADG	Act. %IMF	Act. REA	Act. RibFat	Act. RmpFat	

Overall well balanced bull. 4 sons sell.

Lot **MLL** *J-C FUTURE DIRECTION 1110*
DOB: 03/17/11 Bull **17021412** **Tattoo: 1110**

Sire:	C A Future Direction 5321	\$W	+34.73
	B/R Future Direction 6171	\$F	+37.84
	B/R Blackcap Empress 470	\$G	+43.13
	S S OBJECTIVE T510 0T26	\$YG	+10.81
Dam:	J-C Faye 0837	\$B	+89.16
	J-C Faye 0622	\$EN	-12.19

CED	BW	WN	YR	SC	Milk	CW	Marb	RE	Fat
+8	+1.9	+52	+93	+0.77	+28	+29	+0.64	+0.91	+0.002
Act. BW	Adj. WW	Adj. YW	Act. SC	ADG	Act. %IMF	Act. REA	Act. RibFat	Act. RmpFat	
					4.97	16.40	0.37	0.45	

Possible Calving Ease We used this bull on heifers. High indexing bull at the 2012 Tucumcari Bull Test. 4.8 ADG, 121.7 ADG Ratio, Text Index 118.3, Top 5% REA. 2 sons sell.

Lot **MLL** *SO Payweight 657-09*
DOB: 01/12/09 Bull **16450347** **Tattoo: L657**

Sire:	Vermilion Payweight J847	\$W	+24.37
	Basin Payweight 107S	\$F	+43.95
	Basin Lucy 3829	\$G	+27.99
	S A V 5175 Bando 1023	\$YG	+2.16
Dam:	S O BlackBird 858-06	\$B	+93.51
	Sunny Okanogan Blkdb 7862	\$EN	-7.70

CED	BW	WN	YR	SC	Milk	CW	Marb	RE	Fat
+0	+3.6	+53	+98	+1.12	+21	+50	+0.45	+0.55	+0.012
Act. BW	Adj. WW	Adj. YW	Act. SC	ADG	Act. %IMF	Act. REA	Act. RibFat	Act. RmpFat	

Large framed, thick bull for use on cows. 1 son sells.

Lot **MLL** *RRR 1540 5050 2048 846 552*
DOB: 04/15/10 Bull **17015861** **Tattoo: 1540R**

Sire:	B/R New Design 036	\$W	+29.80
	G A R New Design 5050	\$F	+38.64
	G A R Precision 706	\$G	+45.92
	RRR 846 GRP 3132 510 1030	\$YG	+11.52
Dam:	RRR 2048 846 552 Univ 3298	\$B	+89.73
	RRR 552 Univ 3298 T365 284	\$EN	-14.97

CED	BW	WN	YR	SC	Milk	CW	Marb	RE	Fat
+5	+3.1	+53	+94		+28	+27	+0.71	+0.84	-0.011
Act. BW	Adj. WW	Adj. YW	Act. SC	ADG	Act. %IMF	Act. REA	Act. RibFat	Act. RmpFat	

Larger framed bull. 1 son sells.

Lot **MLL** *H A R B Freedom 1156-288*
 DOB: 03/06/08 Bull 16234904 Tattoo: 288

Mc Kenzie Land & Livestock

TC Freedom 104	\$W	+25.43
Sire: R E B Freedom 1156	\$F	+18.37
D R F B M Zena 1163	\$G	+22.94
H A R B High Plains 975 JH	\$YG	-2.16
Dam: H A R B Jumboleen 0102	\$B	+71.23
H A R B Jumboleen D03	\$EN	-8.39

CED	BW	WN	YR	SC	Milk	CW	Marb	RE	Fat
+ 4	+ 1.9	+ 35	+ 71	+ 0.82	+ 31	+ 32	+ 0.43	+ 0.09	+ 0.025
Act. BW	Adj. WW	Adj. YW	Act. SC	ADG	Act. % IMF	Act. REA	Act. RibFat	Act. RmpFat	

Larger framed bull, purchased from Midland Bull Test in Montana. 1 son sells.

Lot 1 **MLL 45187 2035**
 DOB: 05/15/12 Bull 17463195 Tattoo: 2035

Sire: RAB-EGL Future Design
 RAB-GAR Future Design 4518T
 RAB-GAR MS Load UP - 4870N
 LK 07 Fame

Dam: MS MLL Fame 6037
 MS MLL 442

\$W	+32.14
\$F	+22.68
\$G	
\$YG	
\$B	
\$EN	-1.20

CED	BW	WN	YR	SC	Milk	CW	Marb	RE	Fat
+9	+0.1	+44	+78		+23				
Act. BW	Adj. WW	Adj. YW	Act. SC	ADG	Act. % IMF	Act. REA	Act. RibFat	Act. RmpFat	
75	597		37.00						

CALVING EASE PROSPECT Used by MLL in Spring 2013 on heifers.



Lot 2 **MLL 800 2599**
 DOB: 04/09/12 Bull 17280296 Tattoo: 2599

Sire: Bluegrass Right Time 500
 SPA BLUEGRASS 800
 S P A 825 93 3M1
 KCH Spirit 282 76

Dam: A6 LITTLE LADY
 A 6 Josie 343

\$W	+25.09
\$F	+4.39
\$G	
\$YG	
\$B	
\$EN	+12.03

CED	BW	WN	YR	SC	Milk	CW	Marb	RE	Fat
+8	+0.9	+32	+58	+0.34	+19				
Act. BW	Adj. WW	Adj. YW	Act. SC	ADG	Act. % IMF	Act. REA	Act. RibFat	Act. RmpFat	
75	461	842	34.00	2.38					

Used by MLL Spring 2013. DDF

Lot 5 **MLL 7074L 2600**
 DOB: 04/25/12 Bull 17426205 Tattoo: 2600

Sire: TC Total 410
 J-C TOTAL 0922
 J-C Faye 0257
 M C M 308/042 X 037

Dam: MLL DESIGN 308 9557
 HVR MISSIE 0714

\$W	+23.54
\$F	+19.67
\$G	+33.66
\$YG	+9.85
\$B	+62.29
\$EN	+6.66

CED	BW	WN	YR	SC	Milk	CW	Marb	RE	Fat
+7	+0.6	+40	+74	+0.17	+16	+16	+0.40	+0.41	-0.024
Act. BW	Adj. WW	Adj. YW	Act. SC	ADG	Act. % IMF	Act. REA	Act. RibFat	Act. RmpFat	
75	498		34.00						

This is a gentle bull. Used by MLL on heifers Spring 2013. DDC

Lot 3 **MLL P729 2577**
 DOB: 03/18/12 Bull 17434120 Tattoo: 2577

Sire: Packard In Focus 137
 PACKARD FOCUS 29
 Packard Firefly 36
 A & B New Design 4101

Dam: J-C New Design 0828
 B&H Joy 9740

\$W	+22.37
\$F	+19.87
\$G	
\$YG	
\$B	
\$EN	+9.54

CED	BW	WN	YR	SC	Milk	CW	Marb	RE	Fat
+6	+1.3	+37	+73	+0.74	+16				
Act. BW	Adj. WW	Adj. YW	Act. SC	ADG	Act. % IMF	Act. REA	Act. RibFat	Act. RmpFat	
75	406	947	37.00	3.38					

Used by MLL for heifers. DDF

Lot 6 **MLL E23 2622**
 DOB: 07/01/12 Bull 17709700 Tattoo: 2622

Sire: Connealy Whitman
 P S E23
 P S Miss 758
 G A R Retail Product

Dam: MS MLL 503
 L K 45 Rose

\$W	+29.98
\$F	+14.82
\$G	
\$YG	
\$B	
\$EN	-1.73

CED	BW	WN	YR	SC	Milk	CW	Marb	RE	Fat
+4	+1.7	+40	+70	+0.80	+26				
Act. BW	Adj. WW	Adj. YW	Act. SC	ADG	Act. % IMF	Act. REA	Act. RibFat	Act. RmpFat	
75									

Lot 4 **MLL 7074L 2560**
 DOB: 03/23/12 Bull 17426183 Tattoo: 2560

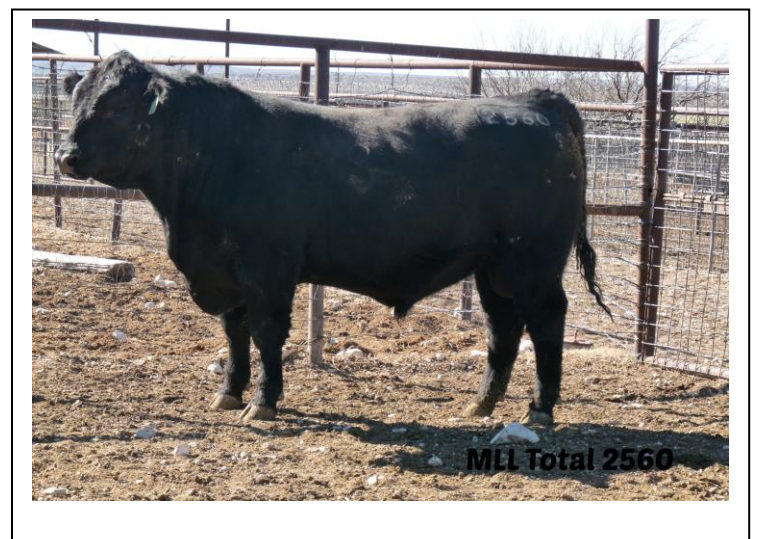
Sire: TC Total 410
 J-C TOTAL 0922
 J-C Faye 0257
 S A V Final Answer 0035

Dam: MLL FINAL ANSWER 9547
 LK-33 TINA

\$W	+32.26
\$F	+26.71
\$G	
\$YG	
\$B	
\$EN	-0.36

CED	BW	WN	YR	SC	Milk	CW	Marb	RE	Fat
+9	-0.3	+46	+82		+21				
Act. BW	Adj. WW	Adj. YW	Act. SC	ADG	Act. % IMF	Act. REA	Act. RibFat	Act. RmpFat	
70	532	1,007		2.97					

Thick, deep bodied heavily muscled bull. DDF



Lot 7 *MLL E23 2627*
DOB: 06/25/12 Bull **17752657** Tattoo: **2627**

Sire: Connealy Whitman
P S E23
P S Miss 758
J-C FAME 0212

Dam: MS MLL 566
Miss H M Power 548

\$W	+29.11
\$F	+4.20
\$G	
\$YG	
\$B	
\$EN	+7.88

CED	BW	WN	YR	SC	Milk	CW	Marb	RE	Fat
I + 5	I + 0.9	I + 35	I + 59		I + 22				
Act. BW	Adj. WW	Adj. YW	Act. SC	ADG	Act. % IMF	Act. REA	Act. RibFat	Act. RmpFat	
78									



Lot 8 *MLL E23 C2548*
DOB: 03/04/12 Bull **622146794** Tattoo: **C2548**

Sire: Connealy Whitman
P S E23
P S Miss 758

Dam: FALCON SEABOARD 314M

Sire EPD: CED + 5; BW + 1.0; WN + 39; YR + 65; Milk + 29
Sire \$Values: \$W +32.99; \$F +9.35; \$G +43.99; \$B +90.59

\$W	
\$F	
\$G	
\$YG	
\$B	
\$EN	

CED	BW	WN	YR	SC	Milk	CW	Marb	RE	Fat
I + 5	I + 0.9	I + 35	I + 59		I + 22				
Act. BW	Adj. WW	Adj. YW	Act. SC	ADG	Act. % IMF	Act. REA	Act. RibFat	Act. RmpFat	
80	440	850	34.00	2.56					

Used on MLL commercial cows Spring 2013

Lot 11 *MLL Payweight 2618*
DOB: 05/06/12 Bull **17709699** Tattoo: **2618**

Sire: Basin Payweight 107S
SO Payweight 657-09
S O BlackBird 858-06
S A V Final Answer 0035

Dam: MLL FINAL ANSWER 9546
MCCALL DATELINE 722T

\$W	+31.26
\$F	+38.64
\$G	
\$YG	
\$B	
\$EN	-6.73

CED	BW	WN	YR	SC	Milk	CW	Marb	RE	Fat
I + 5	I + 2.0	I + 53	I + 94		I + 22				
Act. BW	Adj. WW	Adj. YW	Act. SC	ADG	Act. % IMF	Act. REA	Act. RibFat	Act. RmpFat	
75					3.74	12.90	0.25	0.39	

DDF

Lot 9 *MLL 149U C2021*
DOB: 02/28/12 Bull **622146772** Tattoo: **C2021**

Sire: S S OBJECTIVE T510 0T26
RAB-GAR OBJECTIVE 149U
RAB-GAR MS Load UP 4508P
G A R 1407 New Design 6005

Dam: MLL NEW DESIGN 0001
MLL LK15 C424

Sire EPD: CED + 12; BW + 0.3; WN + 56; YR + 88; Milk + 24
Sire \$Values: \$W +45.70; \$F +29.39; \$G +45.18; \$B +72.76

\$W	
\$F	
\$G	
\$YG	
\$B	
\$EN	

CED	BW	WN	YR	SC	Milk	CW	Marb	RE	Fat
I + 5	I + 0.9	I + 35	I + 59		I + 22				
Act. BW	Adj. WW	Adj. YW	Act. SC	ADG	Act. % IMF	Act. REA	Act. RibFat	Act. RmpFat	
77	475	931	34.00	2.85					

CALVING EASE PROSPECT

Lot 12 *MLL 45187 2626*
DOB: 09/16/12 Bull **17752656** Tattoo: **2626**

Sire: RAB-EGL Future Design
RAB-GAR Future Design 4518T
RAB-GAR MS Load UP - 4870N
V F Venture Forward

Dam: Meads lady Venture 130
Blackcap Mead Joy 113

\$W	+25.71
\$F	+11.10
\$G	+25.16
\$YG	+4.61
\$B	+35.19
\$EN	+7.92

CED	BW	WN	YR	SC	Milk	CW	Marb	RE	Fat
I + 12	I - 0.7	I + 30	I + 63	I + 0.70	I + 22	I + 4	I + 0.32	I + 0.05	I + 0.010
Act. BW	Adj. WW	Adj. YW	Act. SC	ADG	Act. % IMF	Act. REA	Act. RibFat	Act. RmpFat	
78					3.31	11.20	0.21	0.35	

CALVING EASE PROSPECT

Lot 10 *MLL CLASSIC C2009*
DOB: 02/02/12 Bull **622146754** Tattoo: **C2009**

Sire: BC Classic 443 6807 RT 2424
BC Classic 385-7
B C Mignonne's Libby 385

Dam: MLL COMMERCIAL COW
MLL J-C FAME C8039

Sire EPD: CED + 5; BW + 1.7; WN + 58; YR + 94; Milk + 21
Sire \$Values: \$W +42.10; \$F +36.11; \$G +23.77; \$B +85.89

\$W	
\$F	
\$G	
\$YG	
\$B	
\$EN	

CED	BW	WN	YR	SC	Milk	CW	Marb	RE	Fat
I + 5	I + 0.9	I + 35	I + 59		I + 22				
Act. BW	Adj. WW	Adj. YW	Act. SC	ADG	Act. % IMF	Act. REA	Act. RibFat	Act. RmpFat	
74	562	1,007	34.00	2.78					

CALVING EASE PROSPECT MLL used this bull of heifers Spring 2013 without problems



Lot 13	MLL Predestined 3525									
	DOB: 02/04/13 Bull 17710252 Tattoo: 3525									
McKenzie Land & Livestock	Sire: B/R New Design 036									
	G A R PREDESTINED									
	G A R Ext 4206									
	Bon View New Design 1407									
	Dam: MLL 1407 NEW DESIGN 7513									
	MS MLL 509									
	\$W	+28.80								
	\$F	+38.27								
	\$G	+43.62								
	\$YG	+4.38								
	\$B	+88.32								
	\$EN	-12.17								
	CED	BW	WN	YR	SC	Milk	CW	Marb	RE	Fat
	+6	+2.4	+46	+91	+0.29	+29	+28	+0.90	+0.46	+0.019
	Act. BW	Adj. WW	Adj. YW	Act. SC	ADG	Act. %IMF	Act. REA	Act. RibFat	Act. RmpFat	
	78	584	1,208	36.00	3.90	3.63	12.60	0.25	0.29	

ADG:5.0 ADG Ratio:124 DDC Highest ADG in registered group. Top 10% MarbEPD

Lot 17	MLL OBJECTIVE 3513									
	DOB: 01/31/13 Bull 17712310 Tattoo: 3513									
McKenzie Land & Livestock	Sire: S S Traveler 6807 T510									
	S S OBJECTIVE T510 0T26									
	S S Miss Rita R011 7R8									
	SF PREDESTINED 821									
	Dam: MLL 821 1576									
	MLL Merger 8523									
	\$W	+45.08								
	\$F	+40.13								
	\$G	+41.01								
	\$YG	+8.97								
	\$B	+78.71								
	\$EN	-15.12								
	CED	BW	WN	YR	SC	Milk	CW	Marb	RE	Fat
	+9	+0.7	+63	+99	-0.09	+28	+22	+0.63	+0.45	-0.019
	Act. BW	Adj. WW	Adj. YW	Act. SC	ADG	Act. %IMF	Act. REA	Act. RibFat	Act. RmpFat	
	70	702	1,156	33.00	2.84	3.72	11.80	0.18	0.27	

CALVING EASE PROSPECT ADG: 4.18 ADG Ratio:104 Top 25% MarbEPD, Top 15% FatEPD, Top 2% \$W, Top 25% \$F, Top 15% \$G

Lot 14	MLL OBJECTIVE 3520									
	DOB: 02/01/13 Bull 17712372 Tattoo: 3520									
McKenzie Land & Livestock	Sire: S S Traveler 6807 T510									
	S S OBJECTIVE T510 0T26									
	S S Miss Rita R011 7R8									
	G A R PREDESTINED									
	Dam: MLL PREDESTINED 0522									
	MS MLL J-C Fame 6509									
	\$W	+23.38								
	\$F	+44.46								
	\$G	+41.45								
	\$YG	+9.13								
	\$B	+74.53								
	\$EN	-12.14								
	CED	BW	WN	YR	SC	Milk	CW	Marb	RE	Fat
	+1	+4.9	+52	+98	+0.73	+26	+18	+0.64	+0.47	-0.012
	Act. BW	Adj. WW	Adj. YW	Act. SC	ADG	Act. %IMF	Act. REA	Act. RibFat	Act. RmpFat	
	90	584	1,187	38.00	3.77	3.00	13.00	0.18	0.25	

ADG: 4.9 ADG Ratio:122 Top 15% YWEPD, Top 15%\$F, Top 15%\$G, Top 20%MarbEPD, Top 20% FatEPD, Top 20%\$YG; Top

Lot 18	MLL TRUST 3514									
	DOB: 02/01/13 Bull 17712491 Tattoo: 3514									
McKenzie Land & Livestock	Sire: SCR Promise 4042									
	SYDGEN TRUST 6228									
	SydGen Forever Lady 4413									
	M C M 308/042 X 037									
	Dam: MLL 308 1527									
	FALCON QUEEN SUSAN 309N									
	\$W	+27.60								
	\$F	+38.64								
	\$G	+36.51								
	\$YG	+7.70								
	\$B	+81.26								
	\$EN	-1.70								
	CED	BW	WN	YR	SC	Milk	CW	Marb	RE	Fat
	-1	+3.4	+53	+94	+0.93	+19	+28	+0.53	+0.41	-0.021
	Act. BW	Adj. WW	Adj. YW	Act. SC	ADG	Act. %IMF	Act. REA	Act. RibFat	Act. RmpFat	
	82	621	1,192	37.00	3.57	3.30	13.10	0.17	0.30	

ADG: 4.18 ADG Ratio: 104 Top 15% FatEPD

Lot 15	MLL FAME 3506									
	DOB: 01/17/13 Bull 17709701 Tattoo: 3506									
McKenzie Land & Livestock	Sire: S A F Fame									
	LK 07 Fame									
	Enchantress C304									
	G A R 1407 New Design 6005									
	Dam: MLL 6005 NEW DESIGN 9542									
	Meads Monica Power 93									
	\$W	+32.63								
	\$F	+13.43								
	\$G	+29.46								
	\$YG	+4.76								
	\$B	+52.20								
	\$EN	+0.74								
	CED	BW	WN	YR	SC	Milk	CW	Marb	RE	Fat
	+3	+1.6	+43	+70	+0.70	+24	+12	+0.42	+0.13	+0.004
	Act. BW	Adj. WW	Adj. YW	Act. SC	ADG	Act. %IMF	Act. REA	Act. RibFat	Act. RmpFat	
	75	654	1,208	38.00	3.46	3.86	12.40	0.23	0.32	

Outstanding bull! ADG:4.29 ADG Ratio: 107 DDF

Lot 19	MLL FAME 3528									
	DOB: 02/05/13 Bull 17709705 Tattoo: 3528									
McKenzie Land & Livestock	Sire: S A F Fame									
	LK 07 Fame									
	Enchantress C304									
	G A R 1407 New Design 6005									
	Dam: MLL 6005 NEW DESIGN 9577									
	MS MLL 525									
	\$W	+30.40								
	\$F	+17.51								
	\$G	+32.48								
	\$YG	+4.41								
	\$B	+64.98								
	\$EN	+0.07								
	CED	BW	WN	YR	SC	Milk	CW	Marb	RE	Fat
	+4	+1.8	+42	+73	+1.81	+24	+19	+0.51	+0.20	+0.004
	Act. BW	Adj. WW	Adj. YW	Act. SC	ADG	Act. %IMF	Act. REA	Act. RibFat	Act. RmpFat	
	80	603	1,144	43.00	3.38	4.00	11.60	0.23	0.28	

ADG:4.18 ADG Ratio:104

Lot 16	MLL CONTRAST 3536									
	DOB: 02/18/13 Bull 17712457 Tattoo: 3536									
McKenzie Land & Livestock	Sire: Connealy Danny Boy									
	Connealy Contrast									
	Doris of Conanga 669									
	LK 07 Fame									
	Dam: MLL FAME 0538									
	MLL RETAIL PRODUCT 7522									
	\$W	+28.77								
	\$F	+28.17								
	\$G	+26.52								
	\$YG	+0.69								
	\$B	+69.61								
	\$EN	+1.78								
	CED	BW	WN	YR	SC	Milk	CW	Marb	RE	Fat
	+4	+1.6	+43	+82	+0.52	+21	+27	+0.45	+0.27	+0.031
	Act. BW	Adj. WW	Adj. YW	Act. SC	ADG	Act. %IMF	Act. REA	Act. RibFat	Act. RmpFat	
	80	601	1,217	34.00	3.85	3.90	12.40	0.35	0.32	

ADG:4.29 ADG Ratio:107



Lot 20 *MLL Predestined 3523*
DOB: 02/01/13 Bull 17710245 Tattoo: 3523

Sire: B/R New Design 036
 G A R PREDESTINED
 G A R Ext 4206
 S S OBJECTIVE T510 0T26

Dam: J-C DIXIE'S OBJECTIVE 1043
 J-C Dixie 0416

\$W	+31.24
\$F	+36.96
\$G	+45.68
\$YG	+4.92
\$B	+82.97
\$EN	-7.96

CED	BW	WN	YR	SC	Milk	CW	Marb	RE	Fat
+10	+1.0	+46	+90	+1.00	+26	+22	+0.97	+0.44	+0.021
Act. BW	Adj. WW	Adj. YW	Act. SC	ADG	Act. %IMF	Act. REA	Act. RibFat	Act. RmpFat	
68	573	1,135	38.00	3.51	4.47	13.00	0.26	0.39	

ADG:4.8 ADG Ratio:101 DDC Top 15% CED EPD, Top 4% IMF EPD, Top 10% \$G, Top 25% \$B

Lot 23 *MLL 45187 3562*
DOB: 02/25/13 Bull 17728418 Tattoo: 3562

Sire: RAB-EGL Future Design
 RAB-GAR Future Design 4518T
 RAB-GAR MS Load UP - 4870N
 GAR Objective 561

Dam: J-C FAYE 0941
 J-C Faye 0545

\$W	+26.92
\$F	+30.43
\$G	+31.30
\$YG	+5.83
\$B	+69.70
\$EN	+2.76

CED	BW	WN	YR	SC	Milk	CW	Marb	RE	Fat
+10	+1.0	+41	+83	+0.34	+20	+23	+0.44	+0.50	+0.018
Act. BW	Adj. WW	Adj. YW	Act. SC	ADG	Act. %IMF	Act. REA	Act. RibFat	Act. RmpFat	
75	552	1,093	34.00	3.38	3.39	13.00	0.25	0.32	

CALVING EASE PROSPECT ADG:3.88 ADGRatio:97 DDF Top 15% CED EPD

Lot 21 *MLL WAVE 3504*
DOB: 01/27/13 Bull 17712377 Tattoo: 3504

Sire: Gardens Highmark
 GARDENS WAVE
 Green Garden Lady 6255 S2
 B3R TENDER TEN R065

Dam: MLL TENDER TEN 1509
 MLL FAME 9537

\$W	+29.98
\$F	+12.90
\$G	+39.87
\$YG	+3.16
\$B	+80.34
\$EN	+6.72

CED	BW	WN	YR	SC	Milk	CW	Marb	RE	Fat
+11	+0.0	+39	+68	+0.61	+20	+25	+0.80	+0.41	+0.029
Act. BW	Adj. WW	Adj. YW	Act. SC	ADG	Act. %IMF	Act. REA	Act. RibFat	Act. RmpFat	
70	586	1,138	36.00	3.45	4.26	12.30	0.28	0.25	

CALVING EASE PROSPECT ADG: 4.08 ADG Ratio:101, Top 10% CED EPD, Top 15% \$E EPD, Top 10% MarbEPD



Lot 22 *MLL FAME 3530*
DOB: 02/05/13 Bull 17709707 Tattoo: 3530

Sire: S A F Fame
 LK 07 Fame
 Enchantress C304
 G A R 1407 New Design 6005

Dam: MLL 6005 New Design 8555
 MS MLL 501

\$W	+32.99
\$F	+19.47
\$G	+33.56
\$YG	+6.21
\$B	+62.19
\$EN	-1.70

CED	BW	WN	YR	SC	Milk	CW	Marb	RE	Fat
+6	+0.8	+43	+75	-0.04	+25	+16	+0.49	+0.39	+0.013
Act. BW	Adj. WW	Adj. YW	Act. SC	ADG	Act. %IMF	Act. REA	Act. RibFat	Act. RmpFat	
70	612	1,166	33.00	3.46	3.95	13.60	0.27	0.43	

ADG:3.97 ADG Ratio:99 DDF

Lot 24 *MLL FAME 3544*
DOB: 02/23/13 Bull 17709711 Tattoo: 3544

Sire: S A F Fame
 LK 07 Fame
 Enchantress C304
 M C M 308/042 X 037

Dam: MLL 308 0539
 MLL MERGER 6513

\$W	+28.26
\$F	+8.00
\$G	+24.30
\$YG	+5.37
\$B	+44.04
\$EN	+7.19

CED	BW	WN	YR	SC	Milk	CW	Marb	RE	Fat
+3	+2.2	+42	+65	+0.12	+19	+10	+0.28	+0.04	-0.009
Act. BW	Adj. WW	Adj. YW	Act. SC	ADG	Act. %IMF	Act. REA	Act. RibFat	Act. RmpFat	
75	582	1,091	34.00	3.18	3.06	11.70	0.20	0.27	

ADG:3.67 ADG Ratio:91 DDF Top 25% Fat EPD, Top 15% \$E



Lot 25 *MLL FAME 3533*
DOB: 02/15/13 Bull 17759705 Tattoo: 3533

Sire: S A F Fame
 LK 07 Fame
 Enchantress C304
 K C H Precision 109

Dam: A6 SWEETIE
 A 6 Bethany

\$W	+27.50
\$F	-8.52
\$G	+26.06
\$YG	+8.15
\$B	+36.73
\$EN	+19.35

CED	BW	WN	YR	SC	Milk	CW	Marb	RE	Fat
+8	-0.1	+31	+46	+0.69	+16	+4	+0.26	+0.19	-0.010
Act. BW	Adj. WW	Adj. YW	Act. SC	ADG	Act. %IMF	Act. REA	Act. RibFat	Act. RmpFat	
65	553	950	37.00	2.48	3.18	12.60	0.15	0.23	

ADG:2.86 ADG Ratio:71 CAF, AMF Top 25% CED EPD, Top 25% FatEPD, Top 3% \$E

Lot 26	MLL FAME 3585									
	DOB: 03/24/13		Bull		17728420		Tattoo: 3585			
Mc Kenzie Land & Livestock	S A F Fame									
	Sire: LK 07 Fame									
	Enchantress C304									
	LK70 Montana									
	Dam: MS MLL Montana 6538									
	Lady Monica Power 207									
	\$W	+35.70								
	\$F	-4.88								
	\$G	+26.38								
	\$YG	+6.67								
	\$B	+38.48								
	\$EN	+14.85								
	CED	BW	WN	YR	SC	Milk	CW	Marb	RE	Fat
	+ 3	+ 1.3	+ 43	+ 54	+ 0.46	+ 17	+ 5	+ 0.30	+ 0.17	+ 0.002
	Act. BW	Adj. WW	Adj. YW	Act. SC	ADG	Act. % IMF	Act. REA	Act. RibFat	Act. RmpFat	
	70	643	1,030	35.00	2.42	3.72	12.50	0.25	0.25	
ADG:2.76 ADG Ratio:67 Top 20% \$W, Top 5% \$E										

Lot 29	MLL E23 C3009									
	DOB: 02/20/13		Bull		622639919		Tattoo: C3009			
Mc Kenzie Land & Livestock	Connealy Whitman									
	Sire: P S E23									
	P S Miss 758									
	Dam: MLL MERGER C8124									
	Sire EPD: CED + 5; BW + 1.0; WN + 39; YR + 65; Milk + 29									
	Sire \$Values: \$W +32.99; \$F +9.35; \$G +43.99; \$B +90.59									
	\$W									
	\$F									
	\$G									
	\$YG									
	\$B									
	\$EN									
	CED	BW	WN	YR	SC	Milk	CW	Marb	RE	Fat
	Act. BW	Adj. WW	Adj. YW	Act. SC	ADG	Act. % IMF	Act. REA	Act. RibFat	Act. RmpFat	
	80	603	1,200	36.00	3.73	3.92	12.90	0.32	0.32	
ADG: 4.49 ADG Ratio: 112										

Lot 27	PALMA P66										
	DOB: 03/15/13		Bull		COMM		Tattoo: P66				
Mc Kenzie Land & Livestock	Sire:										
	Dam:										
		\$W									
		\$F									
		\$G									
		\$EN									
	CED	BW	WN	YR	SC	Milk	CW	Marb	RE	Fat	
	Act. BW	Adj. WW	Adj. YW	Act. SC	ADG	Act. % IMF	Act. REA	Act. RibFat	Act. RmpFat		
				39.00		3.99	11.90	0.28	0.29		
ADG:5.2 ADG Ratio:129 Highest gaining bull in sale.											

Lot 30	MLL PALMA P80										
	DOB: 03/15/13		Bull		Tattoo: P80						
Mc Kenzie Land & Livestock	Sire:										
	Dam:										
		\$W									
		\$F									
		\$G									
		\$EN									
	CED	BW	WN	YR	SC	Milk	CW	Marb	RE	Fat	
	Act. BW	Adj. WW	Adj. YW	Act. SC	ADG	Act. % IMF	Act. REA	Act. RibFat	Act. RmpFat		
				38.00		3.75	13.70	0.21	0.23		
ADG:4.29 ADG Ratio:111											



Lot 28	MLL FORWARD C3005									
	DOB: 02/01/13		Bull		622639918		Tattoo: C3005			
Mc Kenzie Land & Livestock	Connealy Onward									
	Sire: CONNEALY FORWARD									
	Becky Lee of Conanga 74									
	Dam: MLL COMMERCIAL COW									
	Sire EPD: CED + 17; BW + 1.5; WN + 58; YR + 106; Milk + 33									
	Sire \$Values: \$W +62.89; \$F +52.16; \$G +32.76; \$B +84.98									
	\$W									
	\$F									
	\$G									
	\$YG									
	\$B									
	\$EN									
	CED	BW	WN	YR	SC	Milk	CW	Marb	RE	Fat
	Act. BW	Adj. WW	Adj. YW	Act. SC	ADG	Act. % IMF	Act. REA	Act. RibFat	Act. RmpFat	
	70	668	1,271	39.00	3.77	3.81	12.20	0.27	0.34	
CALVING EASE PROSPECT ADG: 4.90 ADG Ratio:122 DDF										

Lot 31	MLL PS E23 C3012									
	DOB: 02/21/13		Bull		622639920		Tattoo: C3012			
Mc Kenzie Land & Livestock	Connealy Whitman									
	Sire: P S E23									
	P S Miss 758									
	Dam: MLL PREDISTINED C8021									
	Sire EPD: CED + 5; BW + 1.0; WN + 39; YR + 65; Milk + 29									
	Sire \$Values: \$W +32.99; \$F +9.35; \$G +43.99; \$B +90.59									
	\$W									
	\$F									
	\$G									
	\$YG									
	\$B									
	\$EN									
	CED	BW	WN	YR	SC	Milk	CW	Marb	RE	Fat
	Act. BW	Adj. WW	Adj. YW	Act. SC	ADG	Act. % IMF	Act. REA	Act. RibFat	Act. RmpFat	
	75	676	1,220	38.00	3.40	3.39	13.70	0.18	0.27	
ADG:4.29 ADG Ratio:107										

Lot **32** *MLL PALMA P4*
 DOB: 03/15/13 Bull COMM Tattoo: P4

Sire: \$W \$F \$G \$YG \$B \$EN

Dam: \$W \$F \$G \$YG \$B \$EN

CED	BW	WN	YR	SC	Milk	CW	Marb	RE	Fat
Act. BW	Adj. WW	Adj. YW	Act. SC	ADG	Act. % IMF	Act. REA	Act. RibFat	Act. RmpFat	
			38.00		2.90	13.80	0.22	0.30	

ADG:4.28 ADG Ratio:106

Lot **36** *MLL PALMA P90*
 DOB: 03/15/13 Bull COMM Tattoo: P90

Sire: \$W \$F \$G \$YG \$B \$EN

Dam: \$W \$F \$G \$YG \$B \$EN

CED	BW	WN	YR	SC	Milk	CW	Marb	RE	Fat
Act. BW	Adj. WW	Adj. YW	Act. SC	ADG	Act. % IMF	Act. REA	Act. RibFat	Act. RmpFat	
			37.00		3.68	11.90	0.17	0.25	

ADG:3.98 ADG Ratio:99

Lot **33** *MLL PALMA P61*
 DOB: 03/15/13 Bull COMM Tattoo: P61

Sire: \$W \$F \$G \$YG \$B \$EN

Dam: \$W \$F \$G \$YG \$B \$EN

CED	BW	WN	YR	SC	Milk	CW	Marb	RE	Fat
Act. BW	Adj. WW	Adj. YW	Act. SC	ADG	Act. % IMF	Act. REA	Act. RibFat	Act. RmpFat	
			37.00		3.33	13.30	0.24	0.34	

ADG:4.13 ADG Ratio:103

Lot **37** *MLL Predestined C3519*
 DOB: 01/31/13 Bull 622639922 Tattoo: C3519

Sire: B/R New Design 036
 G A R PREDESTINED
 G A R Ext 4206

Dam: MLL BAR OBJ 0556

Sire EPD: CED + 2; BW + 4.0; WN + 51; YR + 91; Milk + 28
 Sire \$Values: \$W +47.64; \$F +35.74; \$G +52.25; \$B +101.10

CED	BW	WN	YR	SC	Milk	CW	Marb	RE	Fat
Act. BW	Adj. WW	Adj. YW	Act. SC	ADG	Act. % IMF	Act. REA	Act. RibFat	Act. RmpFat	
75	610	1,140	36.00	3.31	3.87	12.80	0.20	0.34	

ADG:3.98 ADG Ratio:99 DDC

Lot **34** *MLL PALMA P1*
 DOB: 03/15/13 Bull COMM Tattoo: P1

Sire: \$W \$F \$G \$YG \$B \$EN

Dam: \$W \$F \$G \$YG \$B \$EN

CED	BW	WN	YR	SC	Milk	CW	Marb	RE	Fat
Act. BW	Adj. WW	Adj. YW	Act. SC	ADG	Act. % IMF	Act. REA	Act. RibFat	Act. RmpFat	
			40.00		2.73	13.50	0.21	0.26	

ADG:4.08 ADG Ratio:102

Lot **38** *MLL PALMA P98*
 DOB: 12/15/12 Bull COMM Tattoo: P98

Sire: \$W \$F \$G \$YG \$B \$EN

Dam: \$W \$F \$G \$YG \$B \$EN

CED	BW	WN	YR	SC	Milk	CW	Marb	RE	Fat
Act. BW	Adj. WW	Adj. YW	Act. SC	ADG	Act. % IMF	Act. REA	Act. RibFat	Act. RmpFat	
			45.00		2.81	17.60	0.28	0.29	

ADG:3.97 ADG Ratio:99 17.2 Act REA!!!

Lot **35** *MLL PALMA P70*
 DOB: 03/15/13 Bull COMM Tattoo: P70

Sire: \$W \$F \$G \$YG \$B \$EN

Dam: \$W \$F \$G \$YG \$B \$EN

CED	BW	WN	YR	SC	Milk	CW	Marb	RE	Fat
Act. BW	Adj. WW	Adj. YW	Act. SC	ADG	Act. % IMF	Act. REA	Act. RibFat	Act. RmpFat	
			35.00		3.45	12.60	0.14	0.23	

ADG:4.08 ADG Ratio: 101

Lot **39** *MLL PALMA P60*
 DOB: 03/15/13 Bull COMM Tattoo: P60

Sire: \$W \$F \$G \$YG \$B \$EN

Dam: \$W \$F \$G \$YG \$B \$EN

CED	BW	WN	YR	SC	Milk	CW	Marb	RE	Fat
Act. BW	Adj. WW	Adj. YW	Act. SC	ADG	Act. % IMF	Act. REA	Act. RibFat	Act. RmpFat	
			35.00		3.22	12.70	0.20	0.29	

ADG:3.87 ADG Ratio:96

Lot **40** **MLL PRECISION 203U C3014**
 DOB: 03/08/13 Bull 622639921 Tattoo: C3014

E&B 1680 Precision 1023										\$W	
Sire: RAB 1023 PRECISION 203U										\$F	
RAB MS IN Focus 902S										\$G	
J-C FAME 0212										\$YG	
Dam: MLL MERGER C7025										\$B	
MLL PALMA 19										\$EN	
Sire EPD: CED + 12; BW -0.3; WN + 47; YR + 84; Milk + 22											
Sire \$Values: \$W +32.72; \$F +28.74; \$G +39.22; \$B +94.02											
CED	BW	WN	YR	SC	Milk	CW	Marb	RE	Fat		
Act. BW	Adj. WW	Adj. YW	Act. SC	ADG	Act. % IMF	Act. REA	Act. RibFat	Act. RmpFat			
	599	1,108	36.00	3.18	3.80	10.00	0.18	0.30			

CALVING EASE PROSPECT ADG:3.78 ADG Ratio:94

Lot **43** **MLL PALMA P88**
 DOB: 03/15/13 Bull Tattoo: P88

Sire:										\$W	
Dam:										\$F	
										\$G	
										\$YG	
										\$B	
										\$EN	
CED	BW	WN	YR	SC	Milk	CW	Marb	RE	Fat		
Act. BW	Adj. WW	Adj. YW	Act. SC	ADG	Act. % IMF	Act. REA	Act. RibFat	Act. RmpFat			
			36.00		3.04	11.60	0.22	0.25			

ADG:3.37 ADG Ratio:84



Lot **44** **MLL PALMA P75**
 DOB: 03/15/13 Bull Tattoo: P75

Sire:										\$W	
Dam:										\$F	
										\$G	
										\$YG	
										\$B	
										\$EN	
CED	BW	WN	YR	SC	Milk	CW	Marb	RE	Fat		
Act. BW	Adj. WW	Adj. YW	Act. SC	ADG	Act. % IMF	Act. REA	Act. RibFat	Act. RmpFat			
			35.00		3.05	12.80	0.25	0.39			

ADG:3.37 ADG Ratio:84

Lot **41** **MLL PALMA P99**
 DOB: 01/15/13 Bull COMM Tattoo: P99

Sire:										\$W	
Dam:										\$F	
										\$G	
										\$YG	
										\$B	
										\$EN	
CED	BW	WN	YR	SC	Milk	CW	Marb	RE	Fat		
Act. BW	Adj. WW	Adj. YW	Act. SC	ADG	Act. % IMF	Act. REA	Act. RibFat	Act. RmpFat			
			37.00		3.01	13.80	0.21	0.33			

ADG:3.57 ADG Ratio:89

Lot **45** **MLL E23 C3015**
 DOB: 03/08/13 Bull 622639911 Tattoo: C3015

Sire: Connealy Whitman										\$W	
Sire: P S E23										\$F	
P S Miss 758										\$G	
Dam: MLL RITO 616 C9011										\$YG	
										\$B	
										\$EN	
Sire EPD: CED + 5; BW + 1.0; WN + 39; YR + 65; Milk + 29											
Sire \$Values: \$W +32.99; \$F +9.35; \$G +43.99; \$B +90.59											
CED	BW	WN	YR	SC	Milk	CW	Marb	RE	Fat		
Act. BW	Adj. WW	Adj. YW	Act. SC	ADG	Act. % IMF	Act. REA	Act. RibFat	Act. RmpFat			
70	594	1,064	38.00	2.94	4.05	11.20	0.17	0.21			

ADG:3.27 ADG Ratio:81

Lot **42** **MLL PALMA P89**
 DOB: 03/15/13 Bull COMM Tattoo: P89

Sire:										\$W	
Dam:										\$F	
										\$G	
										\$YG	
										\$B	
										\$EN	
CED	BW	WN	YR	SC	Milk	CW	Marb	RE	Fat		
Act. BW	Adj. WW	Adj. YW	Act. SC	ADG	Act. % IMF	Act. REA	Act. RibFat	Act. RmpFat			
			37.00		3.81	11.80	0.22	0.37			

ADG:3.47 ADG Ratio:86

Lot **46** **MLL FUTURE DIRECTION 3579**
 DOB: 03/25/13 Bull 17763565 Tattoo: 3579

Sire: B/R Future Direction 6171										\$W	+30.20
Sire: J-C Future Direction 0952										\$F	+37.25
J-C Julie 0586										\$G	+27.01
Dam: MYTTY IN FOCUS										\$YG	+2.69
MLL IN FOCUS 1505										\$B	+80.20
MLL 6005 8569										\$EN	-5.03
CED	BW	WN	YR	SC	Milk	CW	Marb	RE	Fat		
+ 7	+ 1.7	+ 48	+ 91	+ 1.68	+ 23	+ 36	+ 0.41	+ 0.40	+ 0.014		
Act. BW	Adj. WW	Adj. YW	Act. SC	ADG	Act. % IMF	Act. REA	Act. RibFat	Act. RmpFat			
78	556	1,118	37.00	3.51	3.18	11.90	0.22	0.29			

CALVING EASE PROSPECT ADG:4.18 ADG Ratio:117 DDF

Lot **47** *MLL 203M 3583*
 DOB: 03/15/13 Bull 17709725 Tattoo: 3583

Sire: E&B 1680 Precision 1023
 RAB 1023 PRECISION 203U
 RAB MS IN Focus 902S
 B/R Future Direction 6171

Dam: J-C JOY'S DIRECTION 1030
 J-C Joy 0563

\$W	+28.68
\$F	+33.86
\$G	+39.30
\$YG	+8.25
\$B	+93.37
\$EN	-7.99

CED	BW	WN	YR	SC	Milk	CW	Marb	RE	Fat
+6	+2.0	+47	+88	+1.18	+25	+37	+0.60	+0.71	-0.007
Act. BW	Adj. WW	Adj. YW	Act. SC	ADG	Act. % IMF	Act. REA	Act. RibFat	Act. RmpFat	
75	602	1,164	38.00	3.51	3.78	12.80	0.21	0.23	

ADG:4.08 ADG Ratio:114 DDF Top 20% RE EPD, Top 20% \$G, Top 25% YG, Top 10% \$B

Lot **50** *MLL 45187 3552*
 DOB: 03/02/13 Bull 17709715 Tattoo: 3552

Sire: RAB-EGL Future Design
 RAB-GAR Future Design 4518T
 RAB-GAR MS Load UP - 4870N
 Bordens 9113 Scotch 0219

Dam: MS MLL 449
 Meads Miss Reno

\$W	+21.61
\$F	+8.76
\$G	+28.26
\$YG	+5.20
\$B	+55.41
\$EN	+12.00

CED	BW	WN	YR	SC	Milk	CW	Marb	RE	Fat
+8	+0.6	+30	+61	+0.79	+18	+15	+0.38	+0.28	+0.012
Act. BW	Adj. WW	Adj. YW	Act. SC	ADG	Act. % IMF	Act. REA	Act. RibFat	Act. RmpFat	
75	531	1,064	37.00	3.33	3.70	12.70	0.16	0.31	

CALVING EASE PROSPECT ADG:3.98 ADG Ratio:111 DDF

Lot **48** *MLL E23 3623*
 DOB: 04/17/13 Bull 17741335 Tattoo: 3623

Sire: Connealy Whitman
 P S E23
 P S Miss 758
 S A V Final Answer 0035

Dam: MLL FINAL ANSWER 9546
 MCCALL DATELINE 722T

\$W	+35.37
\$F	+23.24
\$G	
\$YG	
\$B	
\$EN	-5.90

CED	BW	WN	YR	SC	Milk	CW	Marb	RE	Fat
+6	+1.0	+48	+80		+26				
Act. BW	Adj. WW	Adj. YW	Act. SC	ADG	Act. % IMF	Act. REA	Act. RibFat	Act. RmpFat	
75	642		36.00		3.54	12.60	0.24	0.32	

ADG:4.08 ADG Ratio:114 DDF

Lot **51** *MLL OBJECTIVE 3521*
 DOB: 02/07/13 Bull 17712300 Tattoo: 3521

Sire: S S Traveler 6807 T510
 S S OBJECTIVE T510 OT26
 S S Miss Rita R011 7R8
 J-C TOTAL 0922

Dam: MLL TOTAL 1564
 Miss H M Power 257

\$W	+28.16
\$F	+26.71
\$G	+37.75
\$YG	+8.94
\$B	+56.47
\$EN	-0.15

CED	BW	WN	YR	SC	Milk	CW	Marb	RE	Fat
+2	+2.3	+46	+82	-0.15	+21	+9	+0.53	+0.29	-0.015
Act. BW	Adj. WW	Adj. YW	Act. SC	ADG	Act. % IMF	Act. REA	Act. RibFat	Act. RmpFat	
82	555	1,085	33.00	3.31	3.73	10.80	0.27	0.21	

ADG:3.98 ADG Ratio:111 Top20% FatEPD, Top20% \$YG, Top25% \$G

Lot **49** *MLL 0952 3547*
 DOB: 02/28/13 Bull 17709712 Tattoo: 3547

Sire: B/R Future Direction 6171
 J-C Future Direction 0952
 J-C Julie 0586
 MYTTY IN FOCUS

Dam: MLL MYTTY IN FOCUS 1508
 MLL DESIGN 308 9557

\$W	+35.74
\$F	+36.24
\$G	+31.82
\$YG	+8.01
\$B	+79.89
\$EN	-2.06

CED	BW	WN	YR	SC	Milk	CW	Marb	RE	Fat
+16	-3.3	+50	+91	+1.29	+20	+31	+0.40	+0.64	-0.002
Act. BW	Adj. WW	Adj. YW	Act. SC	ADG	Act. % IMF	Act. REA	Act. RibFat	Act. RmpFat	
45	546	1,064	36.00	3.24	3.33	14.60	0.21	0.27	

CALVING EASE PROSPECT ADG:3.98 ADG Ratio:111 DDC Top CED in Sale. From a first calf heifer. Top 1% CED EPD, Top 25% RE EPD, Top 25% \$YG

Lot **52** *MLL TENDER TEN 3505*
 DOB: 01/29/13 Bull 17712482 Tattoo: 3505

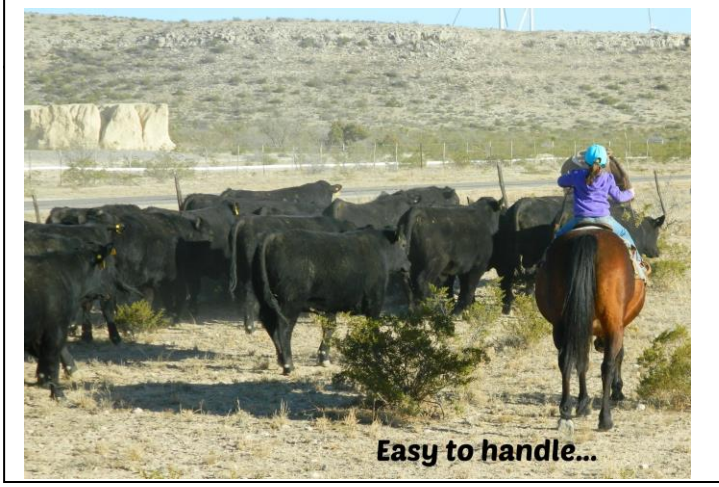
Sire: B3R 0004 Electra 8082-8017
 B3R TENDER TEN R065
 B3R N127 5522 Blackbird 203
 M C M 308/042 X 037

Dam: MLL 308 1531
 MS MLL 445

\$W	+28.89
\$F	+15.48
\$G	+21.62
\$YG	-2.70
\$B	+50.02
\$EN	+5.62

CED	BW	WN	YR	SC	Milk	CW	Marb	RE	Fat
+11	+0.1	+36	+69	+0.91	+22	+16	+0.41	-0.19	+0.024
Act. BW	Adj. WW	Adj. YW	Act. SC	ADG	Act. % IMF	Act. REA	Act. RibFat	Act. RmpFat	
75	543	1,105	38.00	3.51	3.24	11.40	0.18	0.22	

CALVING EASE PROSPECT ADG: 3.88 ADG Ratio: 109 Top 10% CED EPD, Top 10% BW EPD



Lot **53** *MLL 707AL 3572*
 DOB: 03/19/13 Bull 17709723 Tattoo: 3572

Sire: TC Total 410
 J-C TOTAL 0922
 J-C Faye 0257
 H A R B Freedom 1156-288

Dam: MLL FREEDOM 0608
 MLL 1407 NEW DESIGN 7513

\$W	+25.14
\$F	+22.81
\$G	+34.82
\$YG	+7.47
\$B	+74.01
\$EN	-0.36

CED	BW	WN	YR	SC	Milk	CW	Marb	RE	Fat
+9	-0.4	+36	+75	-0.10	+23	+24	+0.49	+0.48	-0.003
Act. BW	Adj. WW	Adj. YW	Act. SC	ADG	Act. % IMF	Act. REA	Act. RibFat	Act. RmpFat	
70	533	1,085	32.00	3.45	3.57	12.60	0.20	0.20	

CALVING EASE PROSPECT ADG:3.88 ADG Ratio:109 DDF Top 20% CED EPD

Lot **54** *MLL E23 3589*
 DOB: 03/23/13 Bull 622639903 Tattoo: 3589

Sire: Connealy Whitman
 P S E23
 P S Miss 758
 G A R Precision 5512
 Dam: Miss MLL Precision 6517
 Meads Fix It 271

Sire EPD: CED + 5; BW + 1.0; WN + 39; YR + 65; Milk + 29
 Sire \$Values: \$W +32.99; \$F +9.35; \$G +43.99; \$B +90.59

\$W	
\$F	
\$G	
\$YG	
\$B	
\$EN	

CED	BW	WN	YR	SC	Milk	CW	Marb	RE	Fat
+6	+0.5	+45	+75	1 + 0.33	+19	+14	+0.31	+0.02	-0.017
Act. BW	Adj. WW	Adj. YW	Act. SC	ADG	Act. % IMF	Act. REA	Act. RibFat	Act. RmpFat	
75	592	1,104	35.00	3.20	4.43	13.90	0.21	0.27	

ADG:3.88 ADG Ratio:109 DDF, CAF

Lot **58** *MLL P729 3602*
 DOB: 04/01/13 Bull 17709728 Tattoo: 3602

Sire: Packard In Focus 137
 PACKARD FOCUS 29
 Packard Firefly 36
 L K 15 Merger
 Dam: MS MLL 531
 Meads Alecia North 378

\$W	+32.35
\$F	+18.52
\$G	+25.33
\$YG	+5.20
\$B	+51.02
\$EN	+5.06

CED	BW	WN	YR	SC	Milk	CW	Marb	RE	Fat
+6	+0.5	+45	+75	1 + 0.33	+19	+14	+0.31	+0.02	-0.017
Act. BW	Adj. WW	Adj. YW	Act. SC	ADG	Act. % IMF	Act. REA	Act. RibFat	Act. RmpFat	
70	645		37.00		3.46	11.10	0.18	0.32	

ADG:3.78 ADG Ratio:106 Top 15% Fat EPD, Top 20% \$E,

Lot **55** *MLL FINAL PRODUCT 3515*
 DOB: 02/01/13 Bull 17712577 Tattoo: 3515

Sire: Connealy Product 568
 CONNEALY FINAL PRODUCT
 Ebonista of Conanga 471
 LK 07 Fame
 Dam: MLL FAME 0559
 Mll Merger 7524

\$W	+35.97
\$F	+26.99
\$G	+28.15
\$YG	+6.72
\$B	+58.30
\$EN	-12.02

CED	BW	WN	YR	SC	Milk	CW	Marb	RE	Fat
+4	+0.7	+48	+83	+0.94	+30	+17	+0.34	+0.56	+0.026
Act. BW	Adj. WW	Adj. YW	Act. SC	ADG	Act. % IMF	Act. REA	Act. RibFat	Act. RmpFat	
70	528	1,037	38.00	3.18	3.92	13.50	0.26	0.32	

ADG: 3.78 ADG Ratio: 106 Top 20% \$W



Lot **56** *MLL BIG EYE 3518*
 DOB: 02/06/13 Bull 17768513 Tattoo: 3518

Sire: C A Future Direction 5321
 ALC BIG EYE D09N
 ALC Hazel L12L
 PACKARD FOCUS 29
 Dam: MLL PF29 1560
 MLL FAR KRUGERRAND 9582

\$W	+35.54
\$F	+32.07
\$G	+38.94
\$YG	+10.54
\$B	+77.51
\$EN	-10.40

CED	BW	WN	YR	SC	Milk	CW	Marb	RE	Fat
+9	+1.1	+48	+87	+0.40	+29	+23	+0.52	+0.81	+0.004
Act. BW	Adj. WW	Adj. YW	Act. SC	ADG	Act. % IMF	Act. REA	Act. RibFat	Act. RmpFat	
70	590	1,108	35.00	3.24	4.01	13.80	0.28	0.25	

CALVING EASE PROSPECT ADG:3.78 ADG Ratio: 106 Out of a first calf heifer.

Lot **59** *MLL FORWARD 3539*
 DOB: 02/21/13 Bull 17712500 Tattoo: 3539

Sire: Connealy Onward
 CONNEALY FORWARD
 Becky Lee of Conanga 74
 RAB-GAR Future Design 4518T
 Dam: MLL 4518T 1595
 MS MLL 409

\$W	+32.38
\$F	+26.42
\$G	+31.30
\$YG	+7.49
\$B	+66.75
\$EN	-2.19

CED	BW	WN	YR	SC	Milk	CW	Marb	RE	Fat
+13	+1.6	+44	+81	+1.32	+25	+21	+0.40	+0.61	+0.017
Act. BW	Adj. WW	Adj. YW	Act. SC	ADG	Act. % IMF	Act. REA	Act. RibFat	Act. RmpFat	
75	535	1,021	38.00	3.04	3.69	12.10	0.23	0.27	

CALVING EASE PROSPECT ADG:3.67 ADG Ratio:103 DDF Top 3% CED EPD

Lot **57** *MLL PENDLETON 3568*
 DOB: 03/18/13 Bull 17709721 Tattoo: 3568

Sire: HARB Pendleton 765 J H
 LK11 Pendle
 LK 24 Velvet
 BLEVINS 044 OBJECTIVE 8645
 Dam: MLL BAR OBJ 0601
 MLL 6005 New Design 8547

\$W	+34.81
\$F	+31.66
\$G	+28.71
\$YG	+2.88
\$B	+80.52
\$EN	-12.33

CED	BW	WN	YR	SC	Milk	CW	Marb	RE	Fat
+3	+2.6	+54	+89	-0.03	+28	+35	+0.45	+0.40	+0.014
Act. BW	Adj. WW	Adj. YW	Act. SC	ADG	Act. % IMF	Act. REA	Act. RibFat	Act. RmpFat	
82	629	1,127	32.00	3.11	3.63	12.40	0.14	0.25	

ADG:3.78 ADG Ratio:106 DDF Top 20% WN EPD, Top 25 % \$W

Lot **60** *MLL Special Focus 3540*
 DOB: 02/22/13 Bull 17712454 Tattoo: 3540

Sire: MYTTY IN FOCUS
 B P F Special Focus 504
 B P F Black Cash 341
 RAB-GAR Future Design 4518T
 Dam: MLL 4518T 1617
 L K 47 Lola

\$W	+32.44
\$F	+35.66
\$G	+26.68
\$YG	-1.72
\$B	+77.63
\$EN	-6.37

CED	BW	WN	YR	SC	Milk	CW	Marb	RE	Fat
+12	+0.0	+46	+89	+1.18	+25	+34	+0.52	+0.34	+0.046
Act. BW	Adj. WW	Adj. YW	Act. SC	ADG	Act. % IMF	Act. REA	Act. RibFat	Act. RmpFat	
70	576	1,117	37.00	3.38	3.65	11.40	0.29	0.34	

CALVING EASE PROSPECT ADG:3.67 ADG Ratio:103 Top 4% CED EPD

Lot **61** *MLL 800 3584*
 DOB: 03/20/13 Bull 17728419 Tattoo: 3584

Sire: Bluegrass Right Time 500
 SPA BLUEGRASS 800
 S P A 825 93 3M1
 L K 15 Merger

Dam: Mll Merger 7529
 Meads Miss Power m321

\$W	+30.06
\$F	+6.31
\$G	+19.92
\$YG	+4.79
\$B	+49.90
\$EN	+7.92

CED	BW	WN	YR	SC	Milk	CW	Marb	RE	Fat
+5	+1.4	+38	+62	-0.06	+21	+17	+0.20	+0.13	-0.005
Act. BW	Adj. WW	Adj. YW	Act. SC	ADG	Act. %IMF	Act. REA	Act. RibFat	Act. RmpFat	
75	607	1,068	33.00	2.88	3.07	12.20	0.18	0.24	

ADG:3.67 ADG Ratio:103 DDF Top 15% \$E

Lot **65** *MLL 7D 1110 3574*
 DOB: 03/21/13 Bull 17722057 Tattoo: 3574

Sire: B/R Future Direction 6171
 J-C FUTURE DIRECTION 1110
 J-C Faye 0837

Dam: MLL 0952 1603
 J-C FAYE 0941

\$W	+32.07
\$F	+31.58
\$G	+33.06
\$YG	+9.25
\$B	+78.36
\$EN	-5.00

CED	BW	WN	YR	SC	Milk	CW	Marb	RE	Fat
+9	+1.3	+49	+87	+0.40	+23	+29	+0.40	+0.72	-0.003
Act. BW	Adj. WW	Adj. YW	Act. SC	ADG	Act. %IMF	Act. REA	Act. RibFat	Act. RmpFat	
70	552	1,027	32.00	2.97	2.98	12.30	0.17	0.25	

CALVING EASE PROSPECT ADG:3.57 RADG:100 DDF Top 20% CED
 EPD, Top 15% RE EPD

Lot **62** *MLL LK11 3556*
 DOB: 03/07/13 Bull 17709718 Tattoo: 3556

Sire: HARB Pendleton 765 J H
 LK11 Pendle
 LK 24 Velvet

Dam: MLL PF29 1579
 MLL 6005 NEW DESIGN 9501

\$W	+18.97
\$F	+20.89
\$G	+25.39
\$YG	+1.58
\$B	+71.60
\$EN	+1.32

CED	BW	WN	YR	SC	Milk	CW	Marb	RE	Fat
-4	+4.5	+40	+75	+0.27	+22	+30	+0.40	+0.20	+0.011
Act. BW	Adj. WW	Adj. YW	Act. SC	ADG	Act. %IMF	Act. REA	Act. RibFat	Act. RmpFat	
90	504	1,034	33.00	3.31	3.40	11.40	0.16	0.25	

ADG:3.67 ADG Ratio:103 DDF

Lot **66** *MLL E23 3604*
 DOB: 04/09/13 Bull 17709730 Tattoo: 3604

Sire: Connealy Whitman
 P S E23
 P S Miss 758

Dam: MS MLL J-C Fame 6509
 Meads Joy of Erica 220

\$W	+29.81
\$F	+7.21
\$G	+29.31
\$YG	+7.08
\$B	+56.44
\$EN	+6.67

CED	BW	WN	YR	SC	Milk	CW	Marb	RE	Fat
+6	+0.2	+36	+62	+0.44	+22	+15	+0.36	+0.20	-0.016
Act. BW	Adj. WW	Adj. YW	Act. SC	ADG	Act. %IMF	Act. REA	Act. RibFat	Act. RmpFat	
70	584		33.00		3.48	14.50	0.20	0.23	

ADG:3.47 ADG Ratio: 97 DDF Top 20% \$E, Top 20% Fat EPD

Lot **63** *MLL P7 29 3534*
 DOB: 02/16/13 Bull 17709710 Tattoo: 3534

Sire: Packard In Focus 137
 PACKARD FOCUS 29
 Packard Firefly 36

Dam: MS MLL Merger 6510
 Meads Blackcap Reno

\$W	+33.87
\$F	+6.83
\$G	+27.49
\$YG	+6.51
\$B	+48.64
\$EN	+8.29

CED	BW	WN	YR	SC	Milk	CW	Marb	RE	Fat
+5	+0.7	+42	+64	+1.06	+20	+11	+0.33	+0.03	-0.024
Act. BW	Adj. WW	Adj. YW	Act. SC	ADG	Act. %IMF	Act. REA	Act. RibFat	Act. RmpFat	
70	604	1,012	39.00	2.55	3.51	11.30	0.23	0.27	

ADG:3.57 ADG Ratio:100 Top 10% FatEPD, Top 15% \$E

Lot **67** *MLL 7D 0952 3569*
 DOB: 03/18/13 Bull 17709722 Tattoo: 3569

Sire: B/R Future Direction 6171
 J-C Future Direction 0952
 J-C Julie 0586

Dam: MLL Freedom 1574
 H A R B Freedom 1156-288
 MS MLL 449

\$W	+27.62
\$F	+20.42
\$G	+22.75
\$YG	+2.62
\$B	+68.93
\$EN	+3.00

CED	BW	WN	YR	SC	Milk	CW	Marb	RE	Fat
+5	+1.7	+41	+75	+1.20	+21	+30	+0.31	+0.23	+0.005
Act. BW	Adj. WW	Adj. YW	Act. SC	ADG	Act. %IMF	Act. REA	Act. RibFat	Act. RmpFat	
75	557	1,055	36.00	3.11	3.55	10.80	0.21	0.22	

ADG:3.47 ADG Ratio:97 DDF Top 25% \$W

Lot **64** *MLL WAVE 3522*
 DOB: 02/10/13 Bull 17712376 Tattoo: 3522

Sire: Gardens Highmark
 GARDENS WAVE
 Green Garden Lady 6255 S2

Dam: MLL 149U 1548
 J-C Joy 0935

\$W	+29.15
\$F	+15.56
\$G	+46.34
\$YG	+10.17
\$B	+87.96
\$EN	+9.16

CED	BW	WN	YR	SC	Milk	CW	Marb	RE	Fat
+11	+0.3	+41	+71	+0.41	+17	+26	+0.78	+0.96	+0.020
Act. BW	Adj. WW	Adj. YW	Act. SC	ADG	Act. %IMF	Act. REA	Act. RibFat	Act. RmpFat	
68	539	1,037	34.00	3.11	3.82	13.80	0.26	0.39	

CALVING EASE PROSPECT ADG:3.57 ADG Ratio:100 Top 10% CED
 EPD, Top 4% REA EPD, Top 10% IMF EPD, Top 15% \$E, Top 10% \$G, Top
 15% \$YG, Top 15% \$B

Lot **MLL 1540|5050 3581**
 DOB: 02/26/13 Bull 17709724 Tattoo: 3581

Sire: G A R New Design 5050
 RRR 1540 5050 2048 846 552
 RRR 2048 846 552 Univ 3298

Dam: MLL CIMARRON 9530
 MLL 1407 NEW DESIGN 7505

\$W	+29.31
\$F	+29.73
\$G	
\$YG	
\$B	
\$EN	-6.29

CED	BW	WN	YR	SC	Milk	CW	Marb	RE	Fat
+8	+1.6	+45	+84		+25				
Act. BW	Adj. WW	Adj. YW	Act. SC	ADG	Act. %IMF	Act. REA	Act. RibFat	Act. RmpFat	
75	571	1,133	34.00	3.51	4.24	12.80	0.14	0.34	

CALVING EASE PROSPECT ADG:3.57 ADG Ratio:100 DDF

Lot 68 *MLL FORWARD 3542*
 DOB: 02/24/13 Bull 17712501 Tattoo: 3542

Sire: CONNEALY FORWARD	\$W	+37.54
Becky Lee of Conanga 74	\$F	+39.96
MCC DAYBREAK	\$G	+36.26
Dam: MLL DAYBREAK 1510	\$YG	+10.79
MLL DESIGN 308 9539	\$B	+78.85
	\$EN	-11.13

CED	BW	WN	YR	SC	Milk	CW	Marb	RE	Fat
+ 15	+ 0.5	+ 53	+ 95	+ 1.01	+ 27	+ 26	+ 0.44	+ 0.83	-0.002
Act. BW	Adj. WW	Adj. YW	Act. SC	ADG	Act. % IMF	Act. REA	Act. RibFat	Act. RmpFat	
65	580	1,089	37.00	3.18	3.81	13.00	0.13	0.34	

CALVING EASE PROSPECT ADG:3.47 ADG Ratio:97 Top 1% CED EPD, Top 25% WN EPD, Top 20% YR EP, Top 10% RE EPD, Top 15% \$W, Top 25% \$F, Top 15% \$YG

Lot 72 *MLL FINAL PRODUCT 3512*
 DOB: 01/31/13 Bull 17712567 Tattoo: 3512

Sire: CONNEALY FINAL PRODUCT	\$W	+41.93
Ebonista of Conanga 471	\$F	+33.94
RAB-GAR OBJECTIVE 149U	\$G	+35.27
Dam: MLL 149U 1529	\$YG	+6.87
J-C BEVERLY 0902	\$B	+68.50
	\$EN	-12.22

CED	BW	WN	YR	SC	Milk	CW	Marb	RE	Fat
+ 11	-1.0	+ 52	+ 90	+ 0.91	+ 30	+ 19	+ 0.52	+ 0.72	+ 0.039
Act. BW	Adj. WW	Adj. YW	Act. SC	ADG	Act. % IMF	Act. REA	Act. RibFat	Act. RmpFat	
58	535	1,021	37.00	3.04	4.28	13.10	0.35	0.29	

CALVING EASE PROSPECT ADG: 3.37 ADG Ratio: 94 Top 5% BW EPD, Top 15% REA EPD, Top 4% \$W. Out of a first calf heifer.

Lot 69 *MLL E23 3607*
 DOB: 04/12/13 Bull 17709733 Tattoo: 3607

Sire: P S E23	\$W	+24.63
P S Miss 758	\$F	-7.26
Musicks Fix It 879	\$G	+30.09
Dam: Meads Erica Lovana 103	\$YG	+7.48
Erica Lovana 306	\$B	+51.97
	\$EN	+18.04

CED	BW	WN	YR	SC	Milk	CW	Marb	RE	Fat
+ 3	+ 1.3	+ 28	+ 46	+ 0.35	+ 18	+ 11	+ 0.37	+ 0.19	-0.015
Act. BW	Adj. WW	Adj. YW	Act. SC	ADG	Act. % IMF	Act. REA	Act. RibFat	Act. RmpFat	
	545		34.00		3.15	12.70	0.20	0.20	

ADG: 3.47 ADG Ratio: 97 DDF

Lot 73 *MLL LK11 3557*
 DOB: 03/07/13 Bull 17717699 Tattoo: 3557

Sire: LK11 Pendle	\$W	+33.95
LK 24 Velvet	\$F	+24.48
M C M 308/042 X 037	\$G	+26.89
Dam: MLL 308 0578	\$YG	+3.08
MS MLL 584	\$B	+77.78
	\$EN	-1.20

CED	BW	WN	YR	SC	Milk	CW	Marb	RE	Fat
+ 9	+ 0.7	+ 48	+ 81	+ 0.37	+ 22	+ 34	+ 0.40	+ 0.35	+ 0.008
Act. BW	Adj. WW	Adj. YW	Act. SC	ADG	Act. % IMF	Act. REA	Act. RibFat	Act. RmpFat	
70	584	1,050	35.00	2.91	3.43	12.90	0.18	0.23	

CALVING EASE PROSPECT ADG:3.27 ADG Ratio:92 DDC Top 20% CED EPD

Lot 70 *MLL P729 3608*
 DOB: 04/08/13 Bull 17709734 Tattoo: 3608

Sire: PACKARD FOCUS 29	\$W	+28.40
Packard Firefly 36	\$F	+23.44
G 13 Stockman 8348	\$G	+26.46
Dam: MCCALL SHOWSTOCK 310N	\$YG	+4.56
S A V Erica 8327	\$B	+59.35
	\$EN	-1.62

CED	BW	WN	YR	SC	Milk	CW	Marb	RE	Fat
+ 4	+ 2.5	+ 45	+ 79	+ 0.64	+ 23	+ 19	+ 0.35	+ 0.03	-0.018
Act. BW	Adj. WW	Adj. YW	Act. SC	ADG	Act. % IMF	Act. REA	Act. RibFat	Act. RmpFat	
80	613		33.00		2.78	11.70	0.20	0.18	

ADG:3.47 ADG Ratio: 97 DDF

Lot 74 *MLL 45187 3551*
 DOB: 03/01/13 Bull 17709714 Tattoo: 3551

Sire: RAB-EGL Future Design	\$W	+19.79
RAB-GAR Future Design 4518T	\$F	-3.38
RAB-GAR MS Load UP - 4870N	\$G	+25.73
Dam: Meads Miss Erica	\$YG	+9.14
Mead Erica Joy 165	\$B	+34.39
	\$EN	+19.68

CED	BW	WN	YR	SC	Milk	CW	Marb	RE	Fat
+ 9	+ 0.3	+ 24	+ 48	+ 0.83	+ 16	+ 3	+ 0.23	+ 0.36	+ 0.001
Act. BW	Adj. WW	Adj. YW	Act. SC	ADG	Act. % IMF	Act. REA	Act. RibFat	Act. RmpFat	
70	487	921	37.00	2.71	2.96	13.30	0.17	0.22	

CALVING EASE PROSPECT ADG:3.21 ADG Ratio:90 Top 20% CED EPD, Top 20% \$YG, Top 3% \$E

Lot 71 *MLL Freedom 3596*
 DOB: 03/26/13 Bull 17709726 Tattoo: 3596

Sire: H A R B Freedom 1156-288	\$W	+19.51
H A R B Jumbleen 0102	\$F	+20.74
J-C Far Krugerrand 0488	\$G	+19.05
Dam: J-C PRIDE 0978	\$YG	-3.56
J-C Pride 0729	\$B	+62.94
	\$EN	+1.16

CED	BW	WN	YR	SC	Milk	CW	Marb	RE	Fat
+ 7	+ 1.5	+ 30	+ 71	+ 0.51	+ 24	+ 28	+ 0.37	-0.17	+ 0.013
Act. BW	Adj. WW	Adj. YW	Act. SC	ADG	Act. % IMF	Act. REA	Act. RibFat	Act. RmpFat	
75	491	1,032	34.00	3.38	3.27	9.40	0.13	0.27	

ADG:3.52 ADG Ratio:99 DDF

Lot 75 *MLL 1110 3560*
 DOB: 03/11/13 Bull 17709719 Tattoo: 3560

Sire: J-C FUTURE DIRECTION 1110	\$W	+33.16
J-C Faye 0837	\$F	+23.44
J-C TOTAL 0922	\$G	+38.57
Dam: MLL TOTAL 1571	\$YG	+11.22
MS MLL 509	\$B	+75.26
	\$EN	-5.48

CED	BW	WN	YR	SC	Milk	CW	Marb	RE	Fat
+ 9	+ 0.6	+ 45	+ 79	+ 0.47	+ 26	+ 22	+ 0.49	+ 0.82	-0.001
Act. BW	Adj. WW	Adj. YW	Act. SC	ADG	Act. % IMF	Act. REA	Act. RibFat	Act. RmpFat	
70	555	998	34.00	2.77	3.58	13.40	0.22	0.20	

CALVING EASE PROSPECT ADG:3.16 ADG Ratio:89 DDF Top 20% CED EPD, Top 10% RE EPD, Top 25% \$G, Top 10% \$YG

Lot 76 *MLL PENDLETON 3566*
 DOB: 03/16/13 Bull 17709720 Tattoo: 3566

Sire: HARB Pendleton 765 J H
 LK11 Pendle
 LK 24 Velvet
 J-C FAME 0212

Dam: MLL JC FAME 0583
 L K 12 LeAnn

\$W	+33.33
\$F	+18.05
\$G	+15.89
\$YG	+1.22
\$B	+58.64
\$EN	+1.32

CED	BW	WN	YR	SC	Milk	CW	Marb	RE	Fat
+5	+1.5	+46	+75	+0.24	+22	+27	+0.19	+0.08	+0.005

Act. BW	Adj. WW	Adj. YW	Act. SC	ADG	Act. %IMF	Act. REA	Act. RibFat	Act. RmpFat
75	581	1,024	34.00	2.77	2.69	11.10	0.13	0.25

ADG:3.16 ADG Ratio:89 DDF

Lot 79 *MLL TENDER TEN 3503*
 DOB: 01/25/13 Bull 17712477 Tattoo: 3503

Sire: B3R 0004 Electra 8082-8017
 B3R TENDER TEN R065
 B3R N127 5522 Blackbird 203
 RAB-GAR Future Design 4518T

Dam: MLL 4518T 1624
 MS MLL 525

\$W	
\$F	
\$G	
\$YG	
\$B	
\$EN	

CED	BW	WN	YR	SC	Milk	CW	Marb	RE	Fat
	-0.9	+32			+23	+4	+0.27	-0.17	+0.034

Act. BW	Adj. WW	Adj. YW	Act. SC	ADG	Act. %IMF	Act. REA	Act. RibFat	Act. RmpFat
70	547	958	33.00	2.57	3.00	11.00	0.21	0.28

CALVING EASE PROSPECT ADG: 2.96; ADG Ratio: 83 Slick haired bull out of a first calf heifer.



Lot 80 *MLL 203U 3597*
 DOB: 03/27/13 Bull 17709727 Tattoo: 3597

Sire: E&B 1680 Precision 1023
 RAB 1023 PRECISION 203U
 RAB MS IN Focus 902S
 LK 07 Fame

Dam: MLL FAME 0531
 MLL 6005 New Design 8534

\$W	+32.87
\$F	+13.90
\$G	+37.33
\$YG	+7.56
\$B	+76.38
\$EN	+0.85

CED	BW	WN	YR	SC	Milk	CW	Marb	RE	Fat
+8	+0.8	+42	+70	+1.13	+24	+24	+0.56	+0.67	+0.018

Act. BW	Adj. WW	Adj. YW	Act. SC	ADG	Act. %IMF	Act. REA	Act. RibFat	Act. RmpFat
70	590	1,048	37.00	2.86	3.85	13.50	0.21	0.36

CALVING EASE PROSPECT ADG:2.96 ADG Ratio:83 DDF Top 25% CED EPD, Top 20% RE EPD, Top 25% \$G

Lot 77 *MLL 707AL 3594*
 DOB: 04/11/13 Bull 17759722 Tattoo: 3594

Sire: TC Total 410
 J-C TOTAL 0922
 J-C Faye 0257
 SPA BLUEGRASS 800

Dam: MLL BG 800 0560
 MLL Predestined 8504

\$W	+28.00
\$F	+18.45
\$G	
\$YG	
\$B	
\$EN	+4.65

CED	BW	WN	YR	SC	Milk	CW	Marb	RE	Fat
+6	+0.8	+40	+73		+20				

Act. BW	Adj. WW	Adj. YW	Act. SC	ADG	Act. %IMF	Act. REA	Act. RibFat	Act. RmpFat
78	600		34.00		3.64	11.20	0.21	0.20

ADG:3.06 ADG Ratio:86 NHF, DDF,AMF

Lot 81 *MLL P729 3606*
 DOB: 04/12/13 Bull 17709732 Tattoo: 3606

Sire: Packard In Focus 137
 PACKARD FOCUS 29
 Packard Firefly 36
 G A R 1407 New Design 6005

Dam: MLL 6005 New Design 8547
 Meads Monica Power 93

\$W	+38.80
\$F	+25.45
\$G	+33.77
\$YG	+6.78
\$B	+64.09
\$EN	-4.70

CED	BW	WN	YR	SC	Milk	CW	Marb	RE	Fat
+7	+0.1	+46	+81	+0.75	+28	+17	+0.48	+0.28	-0.007

Act. BW	Adj. WW	Adj. YW	Act. SC	ADG	Act. %IMF	Act. REA	Act. RibFat	Act. RmpFat
70	659		33.00		3.82	12.10	0.22	0.30

ADG:2.96 ADG Ratio:83 DDC

Lot 78 *MLL 149U 3595*
 DOB: 03/24/13 Bull 17735727 Tattoo: 3595

Sire: S S OBJECTIVE T510 0T26
 RAB-GAR OBJECTIVE 149U
 RAB-GAR MS Load UP 4508P
 G A R 1407 New Design 6005

Dam: MLL 6005 NEW DESIGN 9540
 Meads Miss Blackcap 33

\$W	+37.83
\$F	+9.43
\$G	+39.77
\$YG	+10.35
\$B	+62.37
\$EN	+0.61

CED	BW	WN	YR	SC	Milk	CW	Marb	RE	Fat
+8	+0.9	+44	+67	+0.81	+26	+12	+0.55	+0.63	+0.004

Act. BW	Adj. WW	Adj. YW	Act. SC	ADG	Act. %IMF	Act. REA	Act. RibFat	Act. RmpFat
75	628	1,054	36.00	2.66	3.59	12.40	0.19	0.30

CALVING EASE PROSPECT ADG: 3.06 ADG Ratio: 86 DDC, CAF Top 25% CED EPD, Top 25% RE EPD, Top 15% \$W, Top 20% \$G, Top 15% \$YG

Lot 82 *SCP 1202*
 DOB: 12/02/12 Bull 17488187 Tattoo: 1202

Sire:

Dam:

\$W	
\$F	
\$G	
\$YG	
\$B	
\$EN	

CED	BW	WN	YR	SC	Milk	CW	Marb	RE	Fat

Act. BW	Adj. WW	Adj. YW	Act. SC	ADG	Act. %IMF	Act. REA	Act. RibFat	Act. RmpFat
					3.32	12.80	0.25	0.37

We bought this bull w/his dam in November 2013.

Lot **83** **MLL OBJECTIVE C3006**
 DOB: 02/06/13 Bull 622639910 Tattoo: C3006

Sire: S S Traveler 6807 T510
 S S OBJECTIVE T510 OT26
 S S Miss Rita R011 7R8
 PACKARD FOCUS 29
 Dam: MLL PF 29 C1607
 MLL RETAIL PRODUCT

Sire EPD: CED + 12; BW + 1.0; WN + 69; YR + 119; Milk + 30
 Sire \$Values: \$W +54.56; \$F +64.39; \$G +50.99; \$B +86.45

\$W	
\$F	
\$G	
\$YG	
\$B	
\$EN	

CED	BW	WN	YR	SC	Milk	CW	Marb	RE	Fat
90	554	1,072	32.00	3.24	3.35	11.50	0.20	0.23	

ADG: 3.88 ADG Ratio:125

Lot **87** **MLL 45187 C3600**
 DOB: 04/10/13 Bull 622639913 Tattoo: C3600

Sire: RAB-EGL Future Design
 RAB-GAR Future Design 4518T
 RAB-GAR MS Load UP - 4870N
 L K 15 Merger
 Dam: MLL MERGER C8522

Sire EPD: CED + 14; BW -0.9; WN + 39; YR + 86; Milk + 25
 Sire \$Values: \$W +30.63; \$F +35.28; \$G +36.31; \$B +76.29

\$W	
\$F	
\$G	
\$YG	
\$B	
\$EN	

CED	BW	WN	YR	SC	Milk	CW	Marb	RE	Fat
76	657		32.00		3.61	10.90	0.13	0.27	

CALVING EASE PROSPECT ADG:3.16 ADG Ratio:102

Lot **84** **MLL 800 C3610**
 DOB: 04/12/13 Bull 622639914 Tattoo: C3610

Sire: Bluegrass Right Time 500
 SPA BLUEGRASS 800
 S P A 825 93 3M1
 Dam: MLL DESIGN 308 9579

Sire EPD: CED + 9; BW + 0.6; WN + 40; YR + 71; Milk + 23
 Sire \$Values: \$W +29.74; \$F +16.03; \$G +25.30; \$B +66.94

\$W	
\$F	
\$G	
\$YG	
\$B	
\$EN	

CED	BW	WN	YR	SC	Milk	CW	Marb	RE	Fat
Act. BW	Adj. WW	Adj. YW	Act. SC	ADG	Act. %IMF	Act. REA	Act. RibFat	Act. RmpFat	
657			35.00		3.52	10.30	0.20	0.20	

ADG:3.78 ADG Ratio:122 DDF

Lot **88** **MLL 149U C3622**
 DOB: 05/03/13 Bull 622639915 Tattoo: C3622

Sire: S S OBJECTIVE T510 OT26
 RAB-GAR OBJECTIVE 149U
 RAB-GAR MS Load UP 4508P
 G A R PREDESTINED
 Dam: MLL PREDESTINED 9523
 MLL RETAIL PRODUCT

Sire EPD: CED + 12; BW + 0.3; WN + 56; YR + 88; Milk + 24
 Sire \$Values: \$W +45.70; \$F +29.39; \$G +45.18; \$B +72.76

\$W	
\$F	
\$G	
\$YG	
\$B	
\$EN	

CED	BW	WN	YR	SC	Milk	CW	Marb	RE	Fat
Act. BW	Adj. WW	Adj. YW	Act. SC	ADG	Act. %IMF	Act. REA	Act. RibFat	Act. RmpFat	
70	678		33.00		3.91	11.30	0.21	0.30	

ADG:2.65 ADG Ratio:85 DDF

Lot **85** **MLL PALMA P56**
 DOB: 03/15/13 Bull 999999999 Tattoo: P56

Sire:
 Dam:

\$W	
\$F	
\$G	
\$YG	
\$B	
\$EN	

CED	BW	WN	YR	SC	Milk	CW	Marb	RE	Fat
Act. BW	Adj. WW	Adj. YW	Act. SC	ADG	Act. %IMF	Act. REA	Act. RibFat	Act. RmpFat	
			38.00		1.92	15.60	0.18	0.32	

ADG:3.67 ADG Ratio:118 15.6 Actual REA!!

Lot **89** **MLL PALMA P85**
 DOB: 03/15/13 Bull 999999999 Tattoo: P85

Sire:
 Dam:

\$W	
\$F	
\$G	
\$YG	
\$B	
\$EN	

CED	BW	WN	YR	SC	Milk	CW	Marb	RE	Fat
Act. BW	Adj. WW	Adj. YW	Act. SC	ADG	Act. %IMF	Act. REA	Act. RibFat	Act. RmpFat	
			37.00		1.85	10.70	0.16	0.25	

ADG:2.45 ADG Ratio:79

Lot **86** **PALMA COMMON BULL 87**
 DOB: 03/15/13 Bull 999999999 Tattoo: P87

Sire:
 Dam:

\$W	
\$F	
\$G	
\$YG	
\$B	
\$EN	

CED	BW	WN	YR	SC	Milk	CW	Marb	RE	Fat
Act. BW	Adj. WW	Adj. YW	Act. SC	ADG	Act. %IMF	Act. REA	Act. RibFat	Act. RmpFat	
			36.00		3.21	12.40	0.23	0.32	

ADG:3.47 ADG Ratio:112

Lot **90** **MLL 149U C3025**
 DOB: 05/02/13 Bull 622639912 Tattoo: C3025

Sire: S S OBJECTIVE T510 OT26
 RAB-GAR OBJECTIVE 149U
 RAB-GAR MS Load UP 4508P
 LK 07 Fame
 Dam: MLL FAME C0035
 MLL J-C FAME C7064

Sire EPD: CED + 12; BW + 0.3; WN + 56; YR + 88; Milk + 24
 Sire \$Values: \$W +45.70; \$F +29.39; \$G +45.18; \$B +72.76

\$W	
\$F	
\$G	
\$YG	
\$B	
\$EN	

CED	BW	WN	YR	SC	Milk	CW	Marb	RE	Fat
Act. BW	Adj. WW	Adj. YW	Act. SC	ADG	Act. %IMF	Act. REA	Act. RibFat	Act. RmpFat	
75	615		36.00						

CALVING EASE PROSPECT ADG:2.35 ADG Ratio:76

Lot
91

MLL FAME C3003

DOB: 01/24/13

Bull 622639908

Tattoo: C3003

Mc Kenzie Land & Livestock

Sire: S A F Fame
L K 07 Fame
Enchantress C304
GARDENS WAVE
Dam: MLL WAVE C007
MLL J-C FAME C7013

Sire EPD: CED + 2; BW + 2.2; WN + 42; YR + 58; Milk + 18
Sire \$Values: \$W +30.41; \$F -0.01; \$G +27.39; \$B +39.20

\$W	
\$F	
\$G	
\$YG	
\$B	
\$EN	

CED	BW	WN	YR	SC	Milk	CW	Marb	RE	Fat
60	505	892	32.00	2.42	3.49	10.60	0.16		

CALVING EASE PROSPECT ADG:2.55 ADG Ratio:82 DDF

Lot 1 **MLL FINAL PRODUCT C3002**
DOB: 01/22/13 Cow **Tattoo: C3002**

Sire: Connealy Product 568
 Connealy Final Product
 Ebonista of Conanga 471
 J-C FAME 0212
 Dam: MLL J-C FAME C0048
 PALMA C248

\$W	
\$F	
\$G	
\$YG	
\$B	
\$EN	

CED	BW	WN	YR	SC	Milk	CW	Marb	RE	Fat
Act. BW	Adj. WW	Adj. YW	Act. SC	ADG	Act. %IMF	Act. REA	Act. RibFat	Act. RmpFat	
		0							

WW:550; YW:790

Lot 2 **MLL COMMERCIAL COW C3010**
DOB: 02/16/13 Cow **Tattoo: C3010**

Sire:

Dam: MLL CORTESE 7273

\$W	
\$F	
\$G	
\$YG	
\$B	
\$EN	

CED	BW	WN	YR	SC	Milk	CW	Marb	RE	Fat
Act. BW	Adj. WW	Adj. YW	Act. SC	ADG	Act. %IMF	Act. REA	Act. RibFat	Act. RmpFat	
70									

WW:550; YW:700

Lot 1 **MLL CONTRAST C3004**
DOB: 02/01/13 Cow **Tattoo: C3004**

Sire: Connealy Danny Boy
 Connealy Contrast
 Doris of Conanga 669
 RAB-GAR Future Design 4518T
 Dam: MLL 4518T C1619
 MLL RETAIL PRODUCT C504

\$W	
\$F	
\$G	
\$YG	
\$B	
\$EN	

CED	BW	WN	YR	SC	Milk	CW	Marb	RE	Fat
Act. BW	Adj. WW	Adj. YW	Act. SC	ADG	Act. %IMF	Act. REA	Act. RibFat	Act. RmpFat	
60									

WW:450; YW:680

Lot 2 **MLL COMMERCIAL COW C3011**
DOB: 02/26/13 Cow **Tattoo: C3011**

Sire:

Dam: MLL MONTANA C7041

\$W	
\$F	
\$G	
\$YG	
\$B	
\$EN	

CED	BW	WN	YR	SC	Milk	CW	Marb	RE	Fat
Act. BW	Adj. WW	Adj. YW	Act. SC	ADG	Act. %IMF	Act. REA	Act. RibFat	Act. RmpFat	

WW:480; YW:650

Lot 1 **MLL WAVE C3007**
DOB: 01/31/13 Cow **Tattoo: C3007**

Sire: Gardens Highmark
 Gardens Wave
 Green Garden Lady 6255 S2
 MYTTY IN FOCUS
 Dam: MLL IN FOCUS C0004
 MLL CORTESE C8263

\$W	
\$F	
\$G	
\$YG	
\$B	
\$EN	

CED	BW	WN	YR	SC	Milk	CW	Marb	RE	Fat
Act. BW	Adj. WW	Adj. YW	Act. SC	ADG	Act. %IMF	Act. REA	Act. RibFat	Act. RmpFat	
75									

WW:550; YW:730

Lot 2 **MLL COMMERCIAL COW C3013**
DOB: 02/26/13 Cow **Tattoo: C3013**

Sire:

Dam: LK 07 Fame
 MLL FAME C0031
 MLL MERGER C7078

\$W	
\$F	
\$G	
\$YG	
\$B	
\$EN	

CED	BW	WN	YR	SC	Milk	CW	Marb	RE	Fat
Act. BW	Adj. WW	Adj. YW	Act. SC	ADG	Act. %IMF	Act. REA	Act. RibFat	Act. RmpFat	
70									

WW:590; YW:680 (2/13/14)

Lot 1 **MLL PREDESTINED C3008**
DOB: 02/04/13 Cow **Tattoo: C3008**

Sire: B/R New Design 036
 G A R Predestined
 G A R Ext 4206
 Dam: MLL COMMERCIAL COW
 MLL J-C FAME C564

\$W	
\$F	
\$G	
\$YG	
\$B	
\$EN	

CED	BW	WN	YR	SC	Milk	CW	Marb	RE	Fat
Act. BW	Adj. WW	Adj. YW	Act. SC	ADG	Act. %IMF	Act. REA	Act. RibFat	Act. RmpFat	

WW:550; YW:800

Lot 2 **MLL COMMERCIAL COW C3016**
DOB: 03/18/13 Cow **Tattoo: C3016**

Sire:

Dam: P S E08
 MLL E08 C0602
 MLL RETAIL PRODUCT C504

\$W	
\$F	
\$G	
\$YG	
\$B	
\$EN	

CED	BW	WN	YR	SC	Milk	CW	Marb	RE	Fat
Act. BW	Adj. WW	Adj. YW	Act. SC	ADG	Act. %IMF	Act. REA	Act. RibFat	Act. RmpFat	

WW:440; YW:620 (2/13/14)

Lot 3 *MLL COMMERCIAL COW C3017*
DOB: 03/18/13 **Cow** **Tattoo:** C3017

Sire: J-C FAME 0212
Dam: MLL J-C FAME C0135
 MLL MERGER C530

\$W	
\$F	
\$G	
\$YG	
\$B	
\$EN	

CED	BW	WN	YR	SC	Milk	CW	Marb	RE	Fat
Act. BW	Adj. WW	Adj. YW	Act. SC	ADG	Act. %IMF	Act. REA	Act. RibFat	Act. RmpFat	
75									

WW:450; YW:670 (2/13/14)

Lot 4 *MLL Fame C3601*
DOB: 03/30/13 **Cow** **Tattoo:** C3601

Sire: S A F Fame
 LK 07 Fame
 Enchantress C304

Dam: MLL SOLUTION 9531
 MLL RETAIL PRODUCT 6532

\$W	
\$F	
\$G	
\$YG	
\$B	
\$EN	

CED	BW	WN	YR	SC	Milk	CW	Marb	RE	Fat
Act. BW	Adj. WW	Adj. YW	Act. SC	ADG	Act. %IMF	Act. REA	Act. RibFat	Act. RmpFat	
70									

WW: 490; YW: 580 (2/13/14)

Lot 3 *MLL COMMERCIAL COW C3022*
DOB: 04/11/13 **Cow** **Tattoo:** C3022

Sire:
Dam: MLL COMMERCIAL COW
 MLL J-C FAME C8039

\$W	
\$F	
\$G	
\$YG	
\$B	
\$EN	

CED	BW	WN	YR	SC	Milk	CW	Marb	RE	Fat
Act. BW	Adj. WW	Adj. YW	Act. SC	ADG	Act. %IMF	Act. REA	Act. RibFat	Act. RmpFat	
70									

WW:430; YW: 590 (2/13/14)

Lot 4 *MLL COMMERCIAL COW C3024*
DOB: 04/27/13 **Cow** **Tattoo:** C3024

Sire:
Dam: J-C FAME 0212
 MLL J-C FAME C0005
 MLL MERGER C539

\$W	
\$F	
\$G	
\$YG	
\$B	
\$EN	

CED	BW	WN	YR	SC	Milk	CW	Marb	RE	Fat
Act. BW	Adj. WW	Adj. YW	Act. SC	ADG	Act. %IMF	Act. REA	Act. RibFat	Act. RmpFat	
70									

WW:490; YW: 660 (2/13/14)

Lot 3 *MLL COMMERCIAL COW C3023*
DOB: 04/23/13 **Cow** **Tattoo:** C3023

Sire: J-C FAME 0212
Dam: MLL J-C FAME C0017
 MLL MERGER C559

\$W	
\$F	
\$G	
\$YG	
\$B	
\$EN	

CED	BW	WN	YR	SC	Milk	CW	Marb	RE	Fat
Act. BW	Adj. WW	Adj. YW	Act. SC	ADG	Act. %IMF	Act. REA	Act. RibFat	Act. RmpFat	
72									

WW:520; YW:660 (2/13/14)

Lot 4 *MLL COMMERCIAL COW C3020*
DOB: 04/12/13 **Cow** **Tattoo:** C3020

Sire: Gardens Wave
Dam: MLL WAVE C0003
 MLL J-C FAME C7012

\$W	
\$F	
\$G	
\$YG	
\$B	
\$EN	

CED	BW	WN	YR	SC	Milk	CW	Marb	RE	Fat
Act. BW	Adj. WW	Adj. YW	Act. SC	ADG	Act. %IMF	Act. REA	Act. RibFat	Act. RmpFat	
70									

WW: 470; YW: 660 (2/13/14)

Lot 3 *MLL P729 C3588*
DOB: 03/21/13 **Cow** **Tattoo:** C3588

Sire: Packard In Focus 137
 Packard Focus 29
 Packard Firefly 36

Dam: MLL J-C FAME 576

\$W	
\$F	
\$G	
\$YG	
\$B	
\$EN	

CED	BW	WN	YR	SC	Milk	CW	Marb	RE	Fat
Act. BW	Adj. WW	Adj. YW	Act. SC	ADG	Act. %IMF	Act. REA	Act. RibFat	Act. RmpFat	
75									

WW:470; YW: 640 (2/13/14)

Lot 4 *SCP COMMERCIAL COW 1205*
DOB: 12/01/12 **Cow** **Tattoo:** 1204

Sire:
Dam:

\$W	
\$F	
\$G	
\$YG	
\$B	
\$EN	

CED	BW	WN	YR	SC	Milk	CW	Marb	RE	Fat
Act. BW	Adj. WW	Adj. YW	Act. SC	ADG	Act. %IMF	Act. REA	Act. RibFat	Act. RmpFat	
75									

YW: 820 (2/13/14) Heifer was purchased with dam in November 2013; dam is registered as is sire but heifer was never registered.